

## UK Office

### Everest Biotech Ltd

Cherwell Innovation Centre  
77 Heyford Park  
Upper Heyford  
Oxfordshire  
OX25 5HD  
UK

Enquiries:

[info@everestbiotech.com](mailto:info@everestbiotech.com)

Sales:

[sales@everestbiotech.com](mailto:sales@everestbiotech.com)

Tech support:

[support@everestbiotech.com](mailto:support@everestbiotech.com)

Tel: +44 (0)1869 238326

[www.everestbiotech.com](http://www.everestbiotech.com)

**Research Use Only. Not for  
diagnostic or therapeutic use.**

## EB12494 - Goat Anti-VPS16 (isoform 1) Antibody

Size: 100µg specific antibody in 200µl



### Target Protein

**Principal Names:** VPS16, vacuolar protein sorting 16 homolog (S. cerevisiae), hVPS16, OTTHUMP00000030047, OTTHUMP00000030048, vacuolar protein sorting protein 16, vacuolar protein sorting-associated protein 16 homolog

**Official Symbol:** VPS16

**Accession Number(s):** NP\_072097.2

**Human GeneID(s):** [64601](#)

**Non-Human GeneID(s):** 80743 (mouse), 296159 (rat)

**Important Comments:** This antibody is expected to recognize reported isoform 1 (NP\_072097.2) only.

### Immunogen

Peptide with sequence C-KESQKADEYLRLEIQ, from the internal region of the protein sequence according to NP\_072097.2.

Please note the [peptide](#) is available for sale.

### Purification and Storage

Purified from goat serum by ammonium sulphate precipitation followed by antigen affinity chromatography using the immunizing peptide.

Supplied at 0.5 mg/ml in Tris saline, 0.02% sodium azide, pH7.3 with 0.5% bovine serum albumin.

Aliquot and store at -20°C. Minimize freezing and thawing.

### Applications Tested

**Peptide ELISA:** antibody detection limit dilution 1:128000.

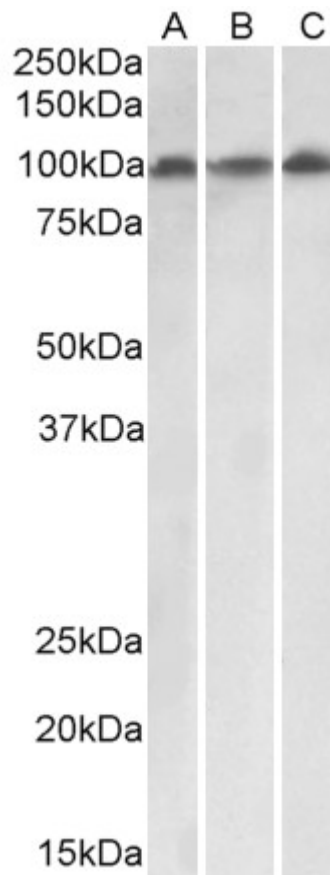
**Western blot:** Approx 100kDa band observed in lysates of cell lines HepG2, HeLa and Jurkat and in lysates of Mouse Spleen and Rat Thymus (calculated MW of 94.7kDa according to NP\_072097.2). Recommended concentration: 0.1-0.3µg/ml. Primary incubation was 1 hour.

**IHC:** Paraffin embedded Human Uterus. Recommended concentration: 5µg/ml.

### Species Reactivity

**Tested:** Human, Mouse, Rat

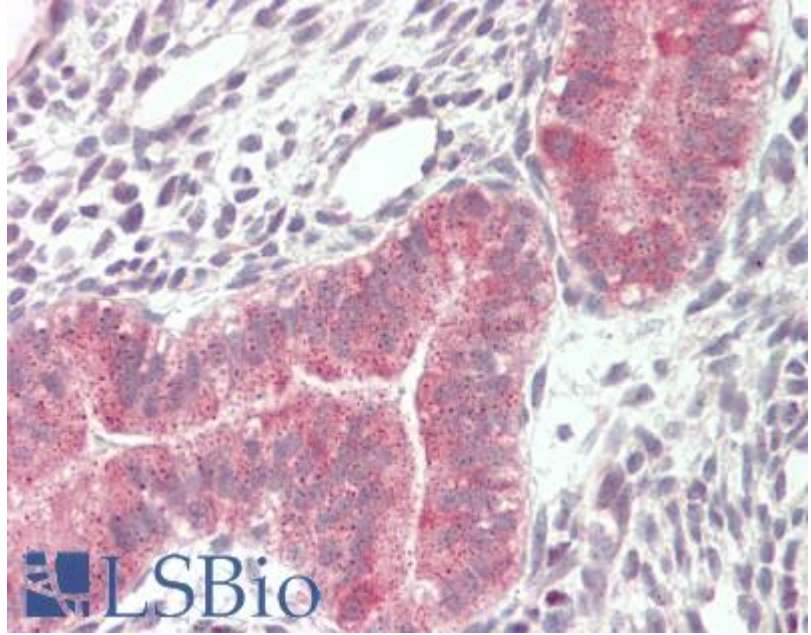
**Expected from sequence similarity:** Human, Mouse, Rat, Dog, Pig, Cow



EB12494 (0.1 $\mu$ g/ml) staining of HeLa (A), HepG2 (B) and Jurkat (C) lysates (35 $\mu$ g protein in RIPA buffer).  
Detected by chemiluminescence.



EB12494 (0.1µg/ml) staining of Mouse Spleen lysate (35µg protein in RIPA buffer). Detected by chemiluminescence.



EB12494 (5µg/ml) staining of paraffin embedded Human Uterus. Steamed antigen retrieval with citrate buffer pH 6, AP-staining.