



## UK Office

### Everest Biotech Ltd

Cherwell Innovation Centre  
77 Heyford Park  
Upper Heyford  
Oxfordshire  
OX25 5HD  
UK

Enquiries:

[info@everestbiotech.com](mailto:info@everestbiotech.com)

Sales:

[sales@everestbiotech.com](mailto:sales@everestbiotech.com)

Tech support:

[support@everestbiotech.com](mailto:support@everestbiotech.com)

Tel: +44 (0)1869 238326

Fax: +44 (0)1869 238327

## US Office

### Everest Biotech c/o Abcore

405 Maple Street, Suite A106  
Ramona,  
CA 92065  
USA

Inquiries:

[info@everestbiotech.com](mailto:info@everestbiotech.com)

Sales:

[usasales@everestbiotech.com](mailto:usasales@everestbiotech.com)

Tech support:

[support@everestbiotech.com](mailto:support@everestbiotech.com)

Tel: 888-320-4628 (toll-free)

Fax: 888-841-9041

[www.everestbiotech.com](http://www.everestbiotech.com)

**Research Use Only. Not for  
diagnostic or therapeutic use.**

## EB06256 - Goat Anti-VPS26A Antibody

Size: 100µg specific antibody in 200µl



### Target Protein

**Principal Names:** VPS26A, vacuolar protein sorting 26 homologue A (yeast), FLJ12930, HB58, Hbeta58, VPS26, Hbeta58 homolog, vacuolar protein sorting 26 (yeast homolog), vacuolar protein sorting 26 (yeast), vacuolar protein sorting 26 homolog A, vacuolar protein sorting 26 homolog A (S. pombe), PEP8A, OTTHUMP00000019721, vacuolar protein sorting 26 A

**Official Symbol:** VPS26A

**Accession Number(s):** NP\_004887.2

**Human GeneID(s):** [9559](#)

**Non-Human GeneID(s):** 30930 (mouse)

**Important Comments:** This antibody is expected to recognize isoform 1 (NP\_004887.2) only.

### Immunogen

Peptide with sequence C-SPESQASAEQPEM, from the C Terminus of the protein sequence according to NP\_004887.2.

Please note the [peptide](#) is available for sale.

### Purification and Storage

Purified from goat serum by ammonium sulphate precipitation followed by antigen affinity chromatography using the immunizing peptide.

Supplied at 0.5 mg/ml in Tris saline, 0.02% sodium azide, pH7.3 with 0.5% bovine serum albumin.

Aliquot and store at -20°C. Minimize freezing and thawing.

### Applications Tested

**Peptide ELISA:** antibody detection limit dilution 1:4000.

**Western blot:** Approx 40kDa band observed in Human Kidney lysates (calculated MW of 38.2 kDa according to NP\_004887.2). In transfected HEK293 transiently expressing VPS26A a band of approx. 40kDa is observed. This band is not observed in the non-transfected HEK293. Recommended for use at 1-3µg/ml.

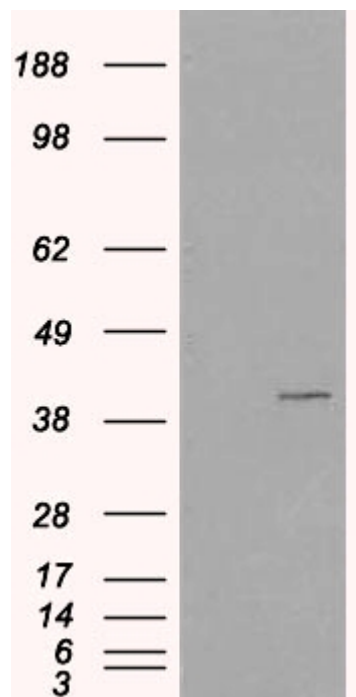
### Species Reactivity

**Tested:** Human

**Expected from sequence similarity:** Human, Mouse, Rat, Pig, Cow



EB06256 staining (1µg/ml) of Human Kidney lysate (RIPA buffer, 35µg total protein per lane). Primary incubated for 1 hour. Detected by chemiluminescence.



HEK293 overexpressing VPS26A (RC205353) and probed with EB06256 (mock transfection in first lane), tested by Origene.