



Everest Biotech Ltd
Cherwell Innovation Centre
77 Heyford Park
Upper Heyford
Oxfordshire
OX25 5HD, United Kingdom

everestbiotech.com

sales@everestbiotech.com

support@everestbiotech.com

Tel +44 1869 238326

Fax +44 1869 238327

Research Use Only. Not for diagnostic or therapeutic use.

Storage: For long-term storage keep aliquots at -20°C. (Store no longer than 12 months at 4°C). Minimize freezing and thawing.

EB06276 - Goat Anti-VPS28 Antibody

Size: 100µg specific antibody in 200µl



Target Protein

Principal Names: yeast class E protein Vps28p homolog, vacuolar protein sorting 28, MGC60323, vacuolar protein sorting 28 homolog (*S. cerevisiae*), vacuolar protein sorting 28 (yeast), VPS28

Official Symbol: VPS28

Accession Number(s): NP_057292.1

Human GeneID(s): [51160](#)

Non-Human GeneID(s): 66914 (mouse)

Important Comments: This antibody is expected to recognize isoform 1 (NP_057292.1) only.

Immunogen

Peptide with sequence C-ESAYNAFNRFLHA, from the C Terminus of the protein sequence according to NP_057292.1.

Please note the [peptide](#) is available for sale.

Purification and Storage

Purified from goat serum by ammonium sulphate precipitation followed by antigen affinity chromatography using the immunizing peptide.

Supplied at 0.5 mg/ml in Tris saline, 0.02% sodium azide, pH7.3 with 0.5% bovine serum albumin.

Aliquot and store at -20°C. Minimize freezing and thawing.

Applications Tested

Peptide ELISA: antibody detection limit dilution 1:1000.

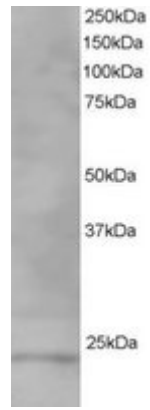
Western blot: Approx 24kDa band observed in H460, Human Testis and Brain lysates (predicted MW of 25kDa according to NP_057292.1). Recommended for use at 1-3µg/ml.

IHC: In paraffin embedded Human Testis, stains acrosomal head caps in round spermatids. Recommended concentration, 10µg/ml.

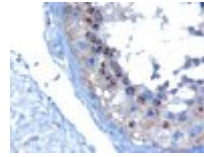
Species Reactivity

Tested: Human

Expected from sequence similarity: Human, Mouse, Rat, Dog, Pig



EB06276 staining (1 μ g/ml) of Human Testis lysate (RIPA buffer, 35 μ g total protein per lane). Primary incubated for 1 hour. Detected by western blot using chemiluminescence.



EB06276 (10 μ g/ml) staining of paraffin embedded Human Testis. Microwaved antigen retrieval with Tris/EDTA buffer pH9, HRP-staining.