



## UK Office

### Everest Biotech Ltd

Cherwell Innovation Centre  
77 Heyford Park  
Upper Heyford  
Oxfordshire  
OX25 5HD  
UK

Enquiries:

[info@everestbiotech.com](mailto:info@everestbiotech.com)

Sales:

[sales@everestbiotech.com](mailto:sales@everestbiotech.com)

Tech support:

[support@everestbiotech.com](mailto:support@everestbiotech.com)

Tel: +44 (0)1869 238326

Fax: +44 (0)1869 238327

## US Office

### Everest Biotech c/o Abcore

405 Maple Street, Suite A106  
Ramona,  
CA 92065  
USA

Inquiries:

[info@everestbiotech.com](mailto:info@everestbiotech.com)

Sales:

[usasales@everestbiotech.com](mailto:usasales@everestbiotech.com)

Tech support:

[support@everestbiotech.com](mailto:support@everestbiotech.com)

Tel: 888-320-4628 (toll-free)

Fax: 888-841-9041

[www.everestbiotech.com](http://www.everestbiotech.com)

**Research Use Only. Not for  
diagnostic or therapeutic use.**

## EB06257 - Goat Anti-VPS29 (C Terminus) Antibody

Size: 100µg specific antibody in 200µl

### Target Protein

**Principal Names:** VPS29, DC7, DC15, PEP11, FLJ20492, DKFZp564F0223, vacuolar protein sorting 29 (yeast), x 007 protein, retromer protein, vacuolar sorting protein VPS29/PEP11, vacuolar protein sorting 29 (yeast homolog), vacuolar protein sorting 29 homolog (*S. cerevisiae*), vacuolar protein sorting 29

**Official Symbol:** VPS29

**Accession Number(s):** NP\_057310.1; NP\_476528.1

**Human GeneID(s):** [51699](#)

**Non-Human GeneID(s):** 56433 (mouse)

**Important Comments:** This antibody is expected to recognise both human isoforms (represented by NP\_057310.1; NP\_476528.1).

### Immunogen

Peptide with sequence C-DDVKVERIEYKKP, from the C Terminus of the protein sequence according to NP\_057310.1; NP\_476528.1.

Please note the [peptide](#) is available for sale.

### Purification and Storage

Purified from goat serum by ammonium sulphate precipitation followed by antigen affinity chromatography using the immunizing peptide.

Supplied at 0.5 mg/ml in Tris saline, 0.02% sodium azide, pH7.3 with 0.5% bovine serum albumin.

Aliquot and store at -20°C. Minimize freezing and thawing.

### Applications Tested

**Peptide ELISA:** antibody detection limit dilution 1:16000.

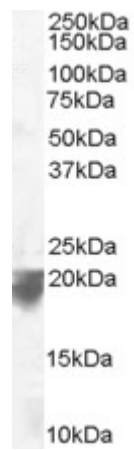
**Western blot:** Approx 20+21kDa bands observed in Human Spleen lysates (calculated MW of 20.5kDa according to NP\_057310.1 and 20.9kDa according to NP\_476528.1).

Recommended concentration: 0.1-0.3µg/ml. Primary incubated for 1 hour.

### Species Reactivity

**Tested:** Human

**Expected from sequence similarity:** Human, Mouse, Rat, Dog, Cow



EB06257 staining (0.1µg/ml) of Human Spleen lysate (RIPA buffer, 35µg total protein per lane). Detected by chemiluminescence.