

**Research Use Only. Not for diagnostic or therapeutic use.**

Storage: For long-term storage keep aliquots at -20°C. (Store no longer than 12 months at 4°C). Minimize freezing and thawing.

## EB06268 - Goat Anti-VPS35 / MEM3 Antibody

Size: 100µg specific antibody in 200µl



### Target Protein

**Principal Names:** vacuolar protein sorting 35, vacuolar protein sorting 35 homolog (S. cerevisiae), maternal-embryonic 3, vacuolar protein sorting 35 (yeast), DKFZp434P1672, DKFZp434E1211, FLJ20388, FLJ13588, FLJ10752, MEM3, VPS35

**Official Symbol:** VPS35

**Accession Number(s):** NP\_060676.2

**Human GeneID(s):** [55737](#)

**Non-Human GeneID(s):** 65114 (mouse)

**Important Comments:** Note there is a hypothetical protein called similar to vacuolar protein sorting 35 (XP\_040192.1), which is virtually identical.

### Immunogen

Peptide with sequence C-SPESEGPIYEGLLI, from the C Terminus of the protein sequence according to NP\_060676.2.

Please note the [peptide](#) is available for sale.

### Purification and Storage

Purified from goat serum by ammonium sulphate precipitation followed by antigen affinity chromatography using the immunizing peptide.

Supplied at 0.5 mg/ml in Tris saline, 0.02% sodium azide, pH7.3 with 0.5% bovine serum albumin.

Aliquot and store at -20°C. Minimize freezing and thawing.

### Applications Tested

**Peptide ELISA:** antibody detection limit dilution 1:32000.

**Western blot:** Approx 85kDa band observed in Human Brain Cerebellum lysates (predicted MW of 91kDa according to NP\_060676.2). Recommended for use at 0.01-1µg/ml.

**IHC:** In paraffin embedded Human Testis, shows positive staining in Leydig cells, and cytoplasmic staining (dot-like) of some epithelial cells of the epididymis and of the rete testis. Data obtained with a previous batch.

**Immunofluorescence:** Staining of VPS35 (red) in human melanoma cells 1205LU.

Please see Scott KL et al.; Nature. 2009 Jun 25;459(7250):1085-90.; PMID: 19553991. Data obtained with a previous batch.

### Species Reactivity

**Tested:** Human

**Expected from sequence similarity:** Human, Mouse, Rat, Cow

### Specific References

The goat polyclonal antibody used in this paper was manufactured by us:

Scott KL, Kabbarah O, Liang MC, Ivanova E, Anagnostou V, Wu J, Dhakal S, Wu M, Chen S, Feinberg T, Huang J, Saci A, Widlund HR, Fisher DE, Xiao Y, Rimm DL, Protopopov A, Wong KK, Chin L.

GOLPH3 modulates mTOR signalling and rapamycin sensitivity in cancer.

Nature. 2009 Jun 25;459(7250):1085-90.

PMID: 19553991

The goat polyclonal antibody used in this paper was manufactured by us:

Gokool S, Tattersall D, Seaman MN.

EHD1 interacts with retromer to stabilize SNX1 tubules and facilitate endosome-to-Golgi retrieval.

Traffic. 2007 Dec;8(12):1873-86.

**PMID:** 17868075

The goat polyclonal antibody used in this paper was manufactured by us:

Nielsen MS, Gustafsen C, Madsen P, Nyengaard JR, Hermey G, Bakke O, Mari M, Schu P, Pohlmann R, Dennes A, Petersen CM.

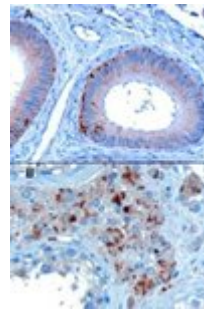
Sorting by the cytoplasmic domain of the amyloid precursor protein binding receptor SorLA.

Mol Cell Biol. 2007 Oct;27(19):6842-51.

**PMID:** 17646382



EB06268 staining (0.05 $\mu$ g/ml) of Human Brain Cerebellum lysate (RIPA buffer, 35 $\mu$ g total protein per lane). Primary incubated for 1 hour. Detected by western blot using chemiluminescence.



EB06268 staining of paraffin embedded Human Testis showing A) Epithelial cells of the epididymis and B) Some leydig cells. Microwaved antigen retrieval with A)Tris/EDTA buffer pH9 at 3 $\mu$ g/ml or B)Citrate buffer pH6 at 10 $\mu$ g/ml., HRP-staining.