



UK Office

Everest Biotech Ltd

Cherwell Innovation Centre
77 Heyford Park
Upper Heyford
Oxfordshire
OX25 5HD
UK

Enquiries:

info@everestbiotech.com

Sales:

sales@everestbiotech.com

Tech support:

support@everestbiotech.com

Tel: +44 (0)1869 238326

Fax: +44 (0)1869 238327

US Office

Everest Biotech c/o Abcore

405 Maple Street, Suite A106
Ramona,
CA 92065
USA

Inquiries:

info@everestbiotech.com

Sales:

usasales@everestbiotech.com

Tech support:

support@everestbiotech.com

Tel: 888-320-4628 (toll-free)

Fax: 888-841-9041

www.everestbiotech.com

**Research Use Only. Not for
diagnostic or therapeutic use.**

EB06833 - Goat Anti-VPS37C Antibody

Size: 100µg specific antibody in 200µl



Target Protein

Principal Names: VPS37C, vacuolar protein sorting 37C (yeast), FLJ20847, vacuolar protein sorting 37C, vacuolar protein sorting 37 homolog C (S. cerevisiae)

Official Symbol: VPS37C

Accession Number(s): NP_060436.4

Human GeneID(s): [55048](#)

Immunogen

Peptide with sequence C-ETLKDKTLQELEELQ, from the internal region of the protein sequence according to NP_060436.4.

Please note the [peptide](#) is available for sale.

Purification and Storage

Purified from goat serum by ammonium sulphate precipitation followed by antigen affinity chromatography using the immunizing peptide.

Supplied at 0.5 mg/ml in Tris saline, 0.02% sodium azide, pH7.3 with 0.5% bovine serum albumin.

Aliquot and store at -20°C. Minimize freezing and thawing.

Applications Tested

Peptide ELISA: antibody detection limit dilution 1:32000.

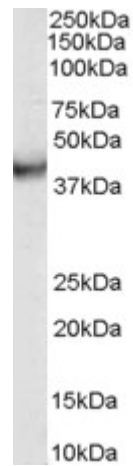
Western blot: Approx 38kDa band observed in human duodenum lysates (calculated MW of 38.7kDa according to NP_060436.4). Recommended concentration: 0.03 - 0.1µg/ml.

IHC: Paraffin embedded Human Prostate and Breast. Recommended concentration: 3.75µg/ml.

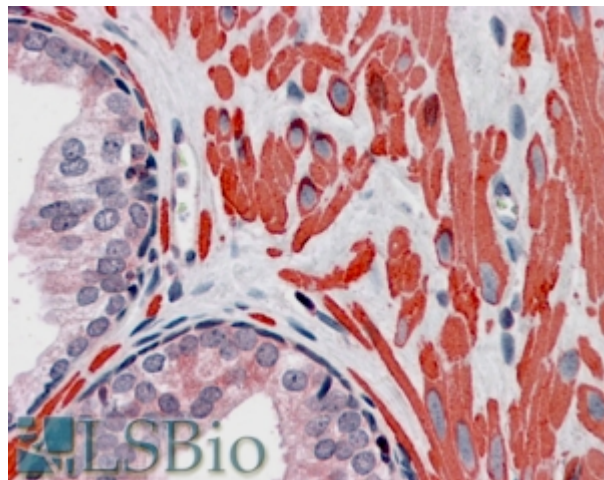
Species Reactivity

Tested: Human

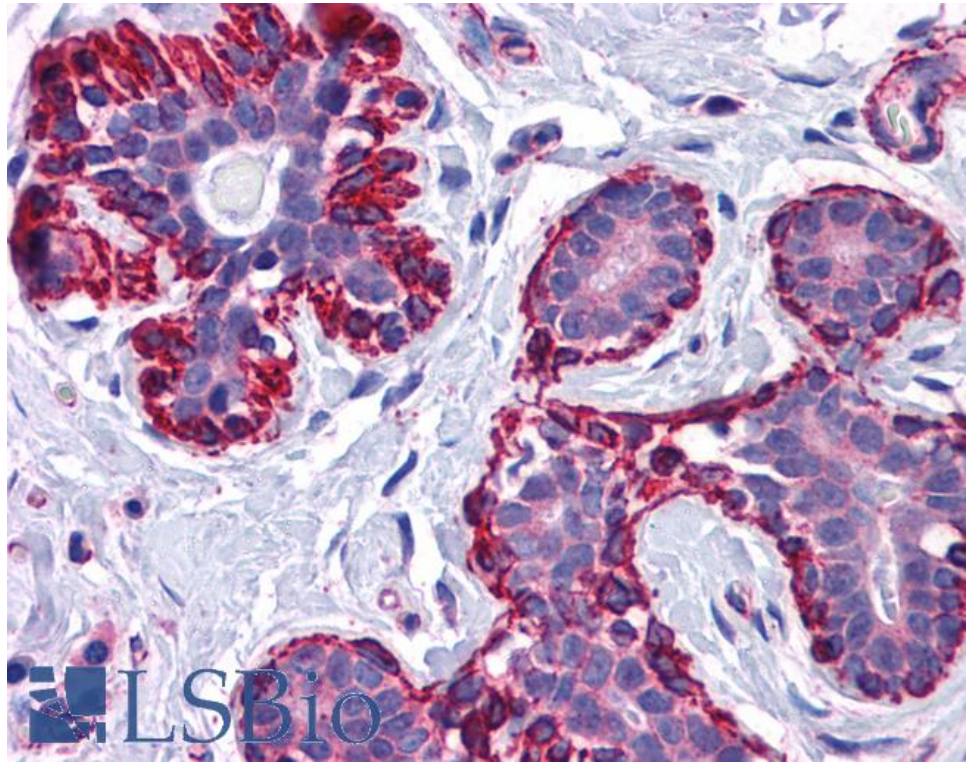
Expected from sequence similarity: Human



EB06833 (0.03g/ml) staining of human duodenum lysate (35µg protein in RIPA buffer). Primary incubation was 1 hour. Detected by chemiluminescence.



EB06833 (3.75µg/ml) staining of paraffin embedded Human Prostate. Steamed antigen retrieval with citrate buffer pH 6, AP-staining.



EB06833 (3.75µg/ml) staining of paraffin embedded Human Breast. Steamed antigen retrieval with citrate buffer pH 6, AP-staining.