



## UK Office

### Everest Biotech Ltd

Cherwell Innovation Centre  
77 Heyford Park  
Upper Heyford  
Oxfordshire  
OX25 5HD  
UK

Enquiries:

[info@everestbiotech.com](mailto:info@everestbiotech.com)

Sales:

[sales@everestbiotech.com](mailto:sales@everestbiotech.com)

Tech support:

[support@everestbiotech.com](mailto:support@everestbiotech.com)

Tel: +44 (0)1869 238326

Fax: +44 (0)1869 238327

## US Office

### Everest Biotech c/o Abcore

405 Maple Street, Suite A106  
Ramona,  
CA 92065  
USA

Inquiries:

[info@everestbiotech.com](mailto:info@everestbiotech.com)

Sales:

[usasales@everestbiotech.com](mailto:usasales@everestbiotech.com)

Tech support:

[support@everestbiotech.com](mailto:support@everestbiotech.com)

Tel: 888-320-4628 (toll-free)

Fax: 888-841-9041

[www.everestbiotech.com](http://www.everestbiotech.com)

**Research Use Only. Not for  
diagnostic or therapeutic use.**

## EB06145 - Goat Anti-VPS45 (C Terminus) Antibody

Size: 100µg specific antibody in 200µl

### Target Protein

**Principal Names:** VPS45, VPS45A, VPS45B, VSP45, VSP45A, H1, H1VPS45, leucocyte vacuolar protein sorting 45, vacuolar protein sorting 45A, vacuolar protein sorting 45A (yeast homolog), vacuolar protein sorting 45 homolog (S. cerevisiae), vacuolar protein sorting 45A (yeast), vacuolar protein sorting 45B (yeast), vacuolar protein sorting protein similar to S. cerevisiae Vsp45p, RP11-458I7.2, VPS54A

**Official Symbol:** VPS45

**Accession Number(s):** NP\_009190.2

**Human GeneID(s):** [11311](#)

**Non-Human GeneID(s):** 22365 (mouse)

### Immunogen

Peptide with sequence C-ESSQVTSRASRR, from the C Terminus of the protein sequence according to NP\_009190.2.

Please note the [peptide](#) is available for sale.

### Purification and Storage

Purified from goat serum by ammonium sulphate precipitation followed by antigen affinity chromatography using the immunizing peptide.

Supplied at 0.5 mg/ml in Tris saline, 0.02% sodium azide, pH7.3 with 0.5% bovine serum albumin.

Aliquot and store at -20°C. Minimize freezing and thawing.

### Applications Tested

**Peptide ELISA:** antibody detection limit dilution 1:32000.

**Western blot:** Approx 60kDa band observed in Human Testis and Peripheral Blood Mononucleocyte lysates (calculated MW of 65.1kDa according to NP\_009190.2).

Recommended concentration: 0.3-1µg/ml. Primary incubation was 1 hour.

**IHC:** Paraffin embedded Human Brain (Cortex), Placenta and Small Intestine.

Recommended concentration: 5µg/ml.

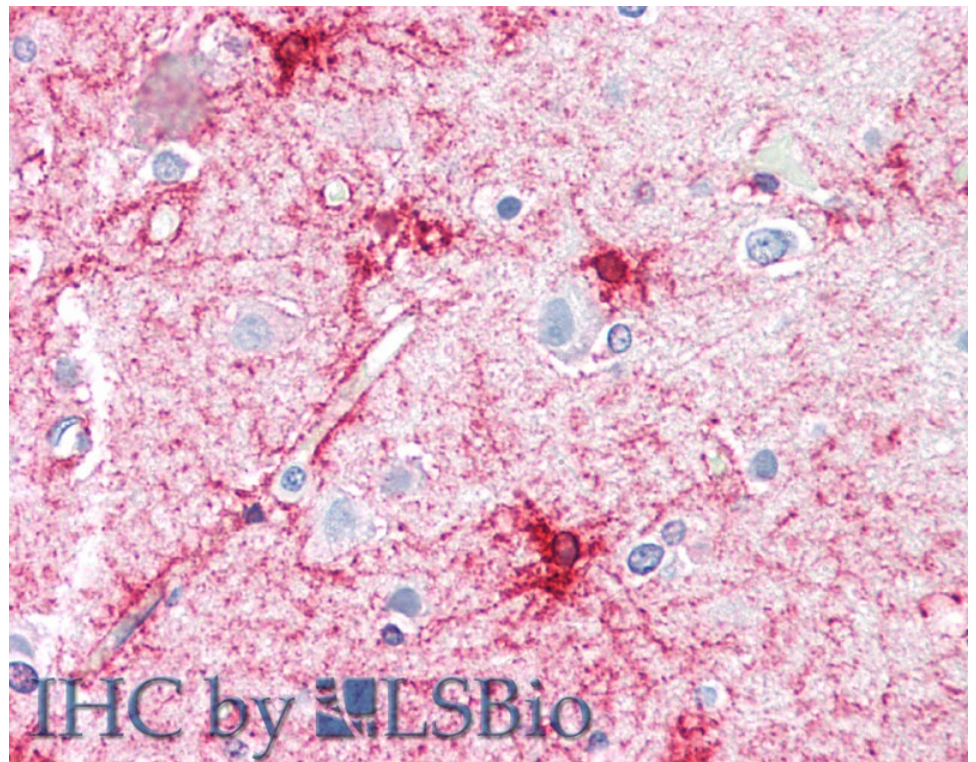
### Species Reactivity

**Tested:** Human

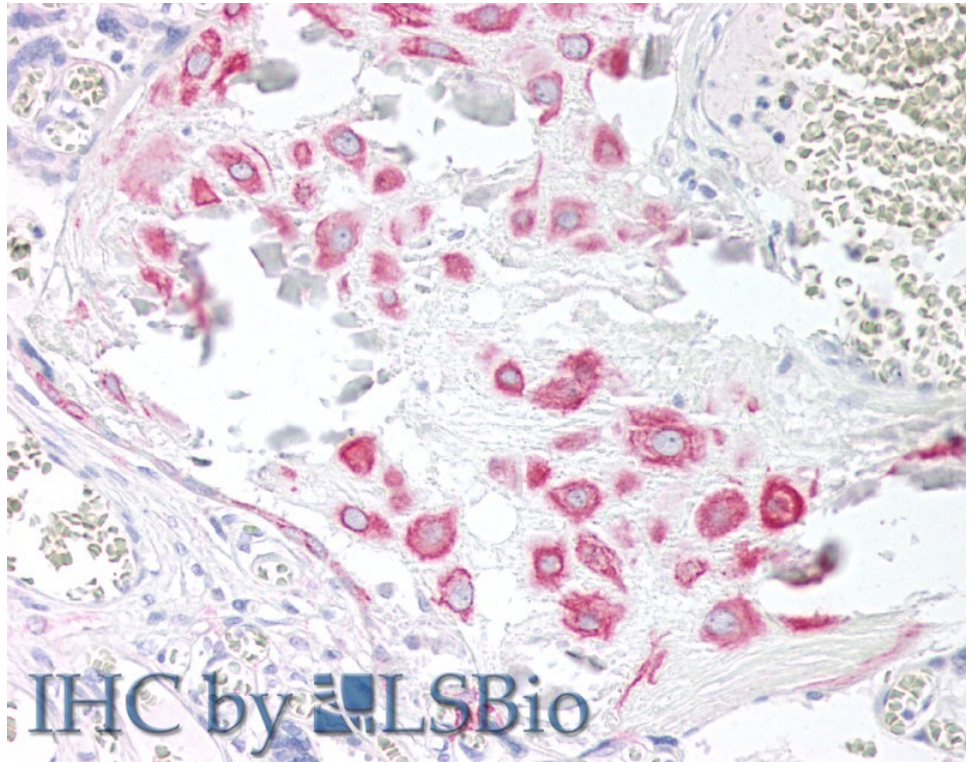
**Expected from sequence similarity:** Human, Mouse, Dog, Cow



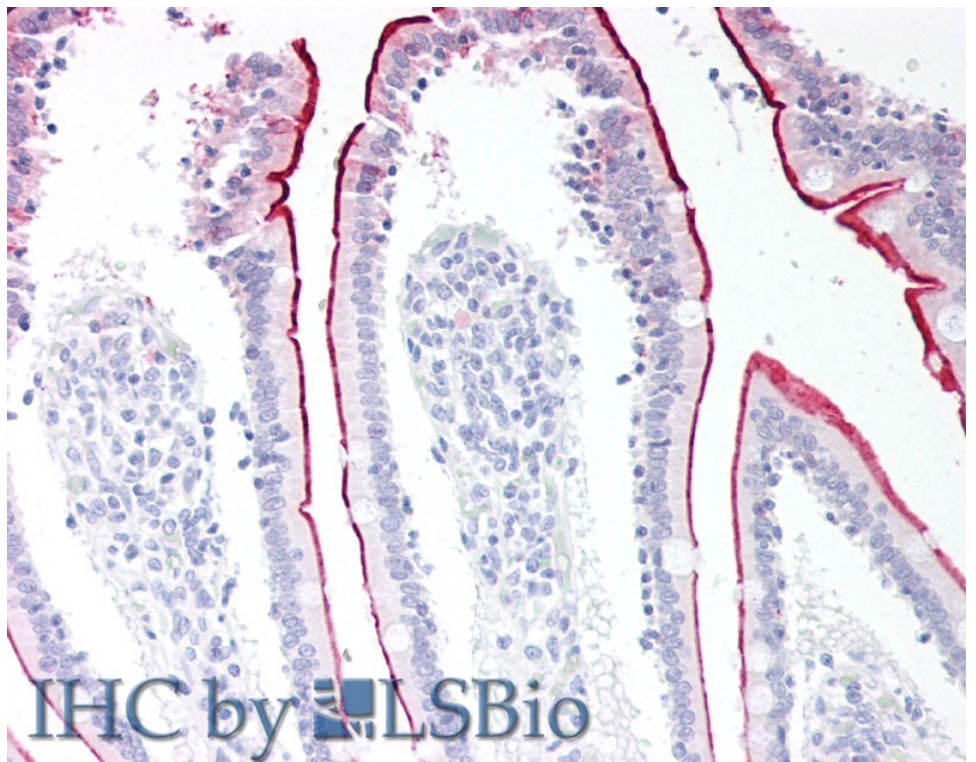
EB06145 (0.3 $\mu$ g/ml) staining of Human Peripheral Blood Mononucleocyte lysate (35 $\mu$ g protein in RIPA buffer).  
Detected by chemiluminescence.



EB06145 (5 $\mu$ g/ml) staining of paraffin embedded Human Cortex. Steamed antigen retrieval with citrate buffer pH 6, AP-staining.



EB06145 (5µg/ml) staining of paraffin embedded Human Placenta. Steamed antigen retrieval with citrate buffer pH 6, AP-staining.



EB06145 (5µg/ml) staining of paraffin embedded Human Small Intestine. Steamed antigen retrieval with citrate buffer pH 6, AP-staining.