

## UK Office

### Everest Biotech Ltd

Cherwell Innovation Centre  
77 Heyford Park  
Upper Heyford  
Oxfordshire  
OX25 5HD  
UK

Enquiries:

[info@everestbiotech.com](mailto:info@everestbiotech.com)

Sales:

[sales@everestbiotech.com](mailto:sales@everestbiotech.com)

Tech support:

[support@everestbiotech.com](mailto:support@everestbiotech.com)

Tel: +44 (0)1869 238326

[www.everestbiotech.com](http://www.everestbiotech.com)

**Research Use Only. Not for  
diagnostic or therapeutic use.**

## EB11285 - Goat Anti-VTCN1 (aa153-165) Antibody

Size: 100µg specific antibody in 200µl



### Target Protein

**Principal Names:** B7h.5, B7H4, B7-H4, B7S1, B7X, FLJ22418, immune costimulatory protein B7-H4, PRO1291, T cell costimulatory molecule B7x, T-cell costimulatory molecule B7x, VCTN1, V-set domain containing T cell activation inhibitor 1, V-set domain-containing T-cell activation inhibitor 1, VTCN1

**Official Symbol:** VTCN1

**Accession Number(s):** NP\_078902.2

**Human GeneID(s):** [79679](#)

**Non-Human GeneID(s):** 242122 (mouse), 295322 (rat)

### Immunogen

Peptide with sequence C-PEVNVVDYNASSET, from the internal region of the protein sequence according to NP\_078902.2.

Please note the [peptide](#) is available for sale.

### Purification and Storage

Purified from goat serum by ammonium sulphate precipitation followed by antigen affinity chromatography using the immunizing peptide.

Supplied at 0.5 mg/ml in Tris saline, 0.02% sodium azide, pH7.3 with 0.5% bovine serum albumin.

Aliquot and store at -20°C. Minimize freezing and thawing.

### Applications Tested

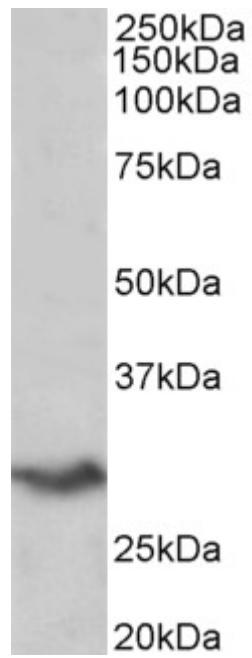
**Peptide ELISA:** antibody detection limit dilution 1:16000.

**Western blot:** Approx 28kDa band observed in Human Spleen lysates (calculated MW of 30.9kDa according to NP\_078902.2). Recommended concentration: 0.1-0.3µg/ml.

### Species Reactivity

**Tested:** Human

**Expected from sequence similarity:** Human, Mouse, Rat, Dog, Cow



EB11285 (0.2 $\mu$ g/ml) staining of Human Spleen lysate (35 $\mu$ g protein in RIPA buffer). Primary incubation was 1 hour. Detected by chemiluminescence.