



UK Office

Everest Biotech Ltd

Cherwell Innovation Centre
77 Heyford Park
Upper Heyford
Oxfordshire
OX25 5HD
UK

Enquiries:

info@everestbiotech.com

Sales:

sales@everestbiotech.com

Tech support:

support@everestbiotech.com

Tel: +44 (0)1869 238326

Fax: +44 (0)1869 238327

US Office

Everest Biotech c/o Abcore

405 Maple Street, Suite A106
Ramona,
CA 92065
USA

Inquiries:

info@everestbiotech.com

Sales:

usasales@everestbiotech.com

Tech support:

support@everestbiotech.com

Tel: 888-320-4628 (toll-free)

Fax: 888-841-9041

www.everestbiotech.com

**Research Use Only. Not for
diagnostic or therapeutic use.**

EB11285 - Goat Anti-VTCN1 (aa153-165) Antibody

Size: 100µg specific antibody in 200µl



Target Protein

Principal Names: B7h.5, B7H4, B7-H4, B7S1, B7X, FLJ22418, immune costimulatory protein B7-H4, PRO1291, T cell costimulatory molecule B7x, T-cell costimulatory molecule B7x, VCTN1, V-set domain containing T cell activation inhibitor 1, V-set domain-containing T-cell activation inhibitor 1, VTCN1

Official Symbol: VTCN1

Accession Number(s): NP_078902.2

Human GeneID(s): [79679](#)

Non-Human GeneID(s): 242122 (mouse), 295322 (rat)

Immunogen

Peptide with sequence C-PEVNVVDYNASSET, from the internal region of the protein sequence according to NP_078902.2.

Please note the [peptide](#) is available for sale.

Purification and Storage

Purified from goat serum by ammonium sulphate precipitation followed by antigen affinity chromatography using the immunizing peptide.

Supplied at 0.5 mg/ml in Tris saline, 0.02% sodium azide, pH7.3 with 0.5% bovine serum albumin.

Aliquot and store at -20°C. Minimize freezing and thawing.

Applications Tested

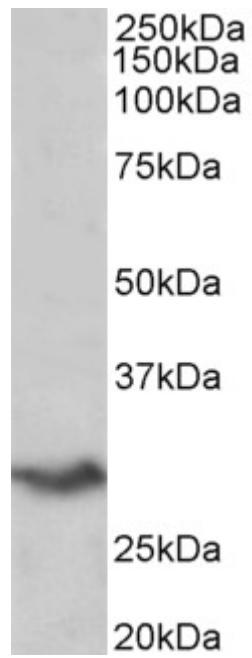
Peptide ELISA: antibody detection limit dilution 1:16000.

Western blot: Approx 28kDa band observed in Human Spleen lysates (calculated MW of 30.9kDa according to NP_078902.2). Recommended concentration: 0.1-0.3µg/ml.

Species Reactivity

Tested: Human

Expected from sequence similarity: Human, Mouse, Rat, Dog, Cow



EB11285 (0.2 μ g/ml) staining of Human Spleen lysate (35 μ g protein in RIPA buffer). Primary incubation was 1 hour. Detected by chemiluminescence.