

UK Office

Everest Biotech Ltd

Cherwell Innovation Centre
77 Heyford Park
Upper Heyford
Oxfordshire
OX25 5HD
UK

Enquiries:

info@everestbiotech.com

Sales:

sales@everestbiotech.com

Tech support:

support@everestbiotech.com

Tel: +44 (0)1869 238326

www.everestbiotech.com

**Research Use Only. Not for
diagnostic or therapeutic use.**

EB11670 - Goat Anti-Wfdc2 (mouse) Antibody

Size: 100µg specific antibody in 200µl



Target Protein

Principal Names: 1600023A02Rik, HE4, OTTMUSP00000001047, WAP domain-containing protein HE4, WAP four-disulfide core domain 2, WAP four-disulfide core domain protein 2, WAP5, Wfdc2

Official Symbol: Wfdc2

Accession Number(s): NP_080599.1

Non-Human GeneID(s): 67701 (mouse)

Important Comments: The immunizing peptide represents the N terminus of the mature protein.

Immunogen

Peptide with sequence DAEKPGECQPQLEPITD, from the N Terminus of the protein sequence according to NP_080599.1.

Please note the [peptide](#) is available for sale.

Purification and Storage

Purified from goat serum by ammonium sulphate precipitation followed by antigen affinity chromatography using the immunizing peptide.

Supplied at 0.5 mg/ml in Tris saline, 0.02% sodium azide, pH7.3 with 0.5% bovine serum albumin.

Aliquot and store at -20°C. Minimize freezing and thawing.

Applications Tested

Peptide ELISA: antibody detection limit dilution 1:128000.

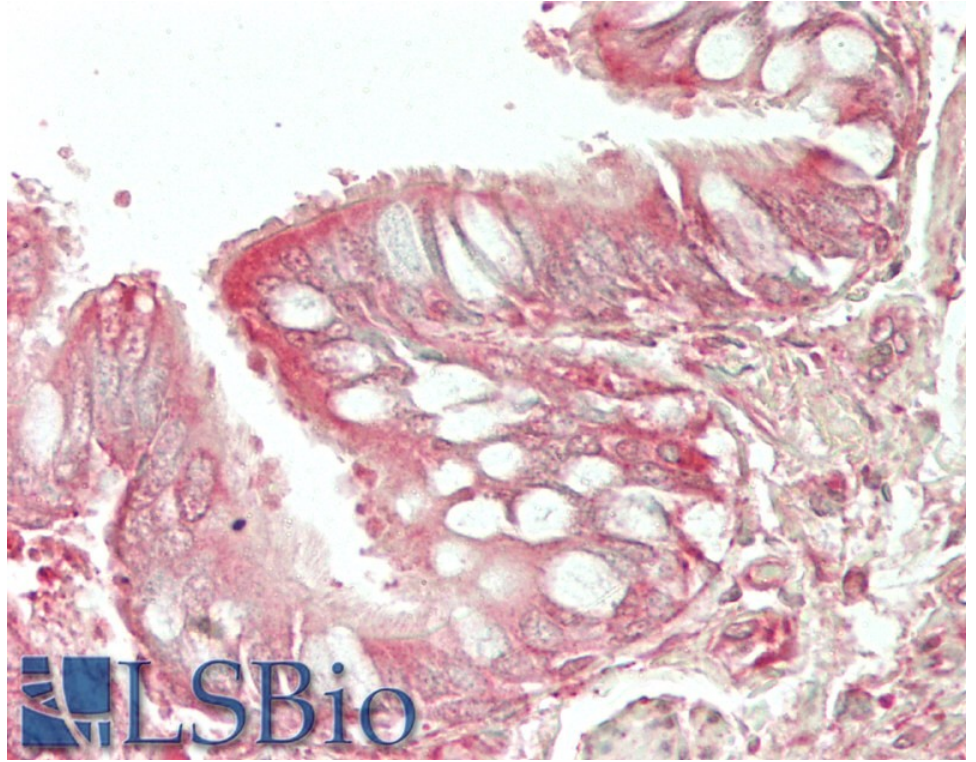
Western blot: Preliminary experiments in lysates of all mouse tissues tested gave no specific signal but low background (at antibody concentration up to 1µg/ml).

IHC: Paraffin embedded Human Lung. Recommended concentration: 5µg/ml.

Species Reactivity

Tested: Human

Expected from sequence similarity: Mouse



EB11670 (5µg/ml) staining of paraffin embedded Human Lung. Steamed antigen retrieval with citrate buffer pH 6, AP-staining.