

UK Office

Everest Biotech Ltd

Cherwell Innovation Centre
77 Heyford Park
Upper Heyford
Oxfordshire
OX25 5HD
UK

Enquiries:

info@everestbiotech.com

Sales:

sales@everestbiotech.com

Tech support:

support@everestbiotech.com

Tel: +44 (0)1869 238326

www.everestbiotech.com

**Research Use Only. Not for
diagnostic or therapeutic use.**

EB07896 - Goat Anti-WIPF1 Antibody

Size: 100µg specific antibody in 200µl



Target Protein

Principal Names: WIPF1, WAS/WASL interacting protein family, member 1, MGC111041, PRPL-2, WASPIP, WIP, Wiskott-Aldrich syndrome protein interacting protein

Official Symbol: WIPF1

Accession Number(s): NP_003378.3; NP_001070737.1; NP_001362764.1; NP_001362768.1

Human GeneID(s): [7456](#)

Non-Human GeneID(s): 215280 (mouse), 117538 (rat)

Immunogen

Peptide with sequence C-KLARNESRSGSNRRE, from the C Terminus of the protein sequence according to NP_003378.3; NP_001070737.1; NP_001362764.1; NP_001362768.1.

Please note the [peptide](#) is available for sale.

Purification and Storage

Purified from goat serum by ammonium sulphate precipitation followed by antigen affinity chromatography using the immunizing peptide.

Supplied at 0.5 mg/ml in Tris saline, 0.02% sodium azide, pH7.3 with 0.5% bovine serum albumin.

Aliquot and store at -20°C. Minimize freezing and thawing.

Applications Tested

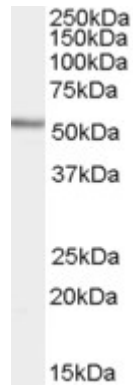
Peptide ELISA: antibody detection limit dilution 1:64000.

Western blot: Approx. 55kDa band observed in Human Lymph Node, Spleen and Tonsil lysates (calculated MW of 51.3kDa according to NP_003378.3 and NP_001070737.1). In transfected HEK293 transiently expressing WIPF1 a band of approx. 55kDa is observed. This band is not observed in the non-transfected HEK293. Recommended concentration: 0.03-0.1µg/ml. Primary incubation was 1 hour.

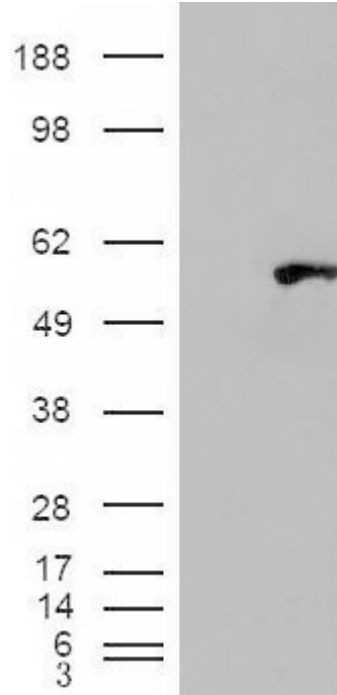
Species Reactivity

Tested: Human

Expected from sequence similarity: Human, Mouse, Rat, Dog, Cow



EB07896 (0.03 μ g/ml) staining of Human Tonsil lysate (35 μ g protein in RIPA buffer). Detected by chemiluminescence.



HEK293 overexpressing WIPF1 (RC217601) and probed with EB07896 (mock transfection in first lane), tested by Origene.