



UK Office

Everest Biotech Ltd

Cherwell Innovation Centre
77 Heyford Park
Upper Heyford
Oxfordshire
OX25 5HD
UK

Enquiries:

info@everestbiotech.com

Sales:

sales@everestbiotech.com

Tech support:

support@everestbiotech.com

Tel: +44 (0)1869 238326

www.everestbiotech.com

**Research Use Only. Not for
diagnostic or therapeutic use.**

EB09114 - Goat Anti-WIZ Antibody

Size: 100µg specific antibody in 200µl



Target Protein

Principal Names: WIZ, widely interspaced zinc finger motifs, ZNF803, WIZ zinc finger, widely-interspaced zinc finger motifs

Official Symbol: WIZ

Accession Number(s): NP_067064.2; NP_001317324.1

Human GeneID(s): [58525](#)

Non-Human GeneID(s): 22404 (mouse), 314598 (rat)

Immunogen

Peptide with sequence C-RSYIQGGRPFTKKFR, from the internal region of the protein sequence according to NP_067064.2; NP_001317324.1.

Please note the [peptide](#) is available for sale.

Purification and Storage

Purified from goat serum by ammonium sulphate precipitation followed by antigen affinity chromatography using the immunizing peptide.

Supplied at 0.5 mg/ml in Tris saline, 0.02% sodium azide, pH7.3 with 0.5% bovine serum albumin.

Aliquot and store at -20°C. Minimize freezing and thawing.

Applications Tested

Peptide ELISA: antibody detection limit dilution 1:2000.

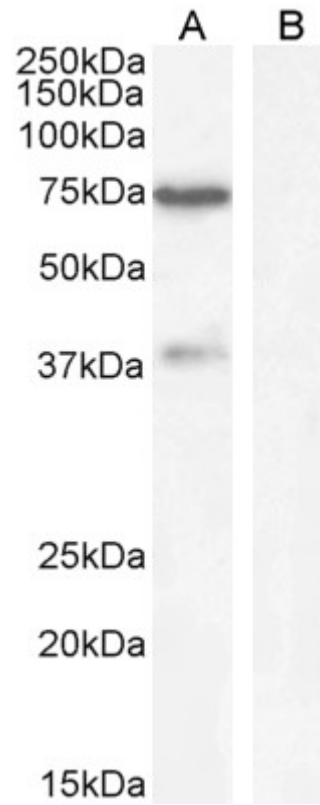
Western blot: Approx 75kDa band observed in Human Brain (Cerebellum) lysates (calculated MW of 85.4kDa according to NP_067064.2). An additional band of unknown identity was also consistently observed at 38kDa. This band was successfully blocked by incubation with the immunizing peptide. Recommended concentration: 0.3-1µg/ml. Primary incubation 1 hour at room temperature.

Flow Cytometry: Flow cytometric analysis of HeLa cells. Recommended concentration: 10ug/ml.

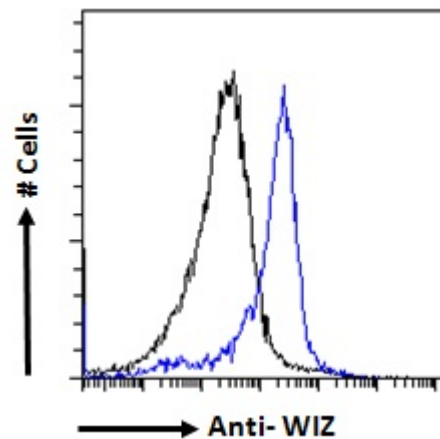
Species Reactivity

Tested: Human

Expected from sequence similarity: Human, Mouse, Rat



EB09114 (1 μ g/ml) staining of Human Cerebellum lysate (A) + Blocking peptide (B) (35 μ g protein in RIPA buffer).
Detected by chemiluminescence.



EB09114 Flow cytometric analysis of paraformaldehyde fixed HeLa cells (blue line), permeabilized with 0.5% Triton. Primary incubation 1hr (10 μ g/ml) followed by Alexa Fluor 488 secondary antibody (1 μ g/ml). IgG control: Unimmunized goat IgG (black line) followed by Alexa Fluor 488 secondary antibody.