



UK Office

Everest Biotech Ltd

Cherwell Innovation Centre
77 Heyford Park
Upper Heyford
Oxfordshire
OX25 5HD
UK

Enquiries:

info@everestbiotech.com

Sales:

sales@everestbiotech.com

Tech support:

support@everestbiotech.com

Tel: +44 (0)1869 238326

Fax: +44 (0)1869 238327

US Office

Everest Biotech c/o Abcore

405 Maple Street, Suite A106
Ramona,
CA 92065
USA

Inquiries:

info@everestbiotech.com

Sales:

usasales@everestbiotech.com

Tech support:

support@everestbiotech.com

Tel: 888-320-4628 (toll-free)

Fax: 888-841-9041

www.everestbiotech.com

**Research Use Only. Not for
diagnostic or therapeutic use.**

EB09452 - Goat Anti-WNT15 / WNT9B Antibody

Size: 100µg specific antibody in 200µl



Target Protein

Principal Names: WNT9B, wingless-type MMTV integration site family, member 9B, WNT14B, WNT15, wingless-type MMTV integration site family, member 15

Official Symbol: WNT9B

Accession Number(s): NP_003387.1

Human GeneID(s): [7484](#)

Non-Human GeneID(s): 22412 (mouse), 303586 (rat)

Immunogen

Peptide with sequence C-KRGNKDLRARADA, from the internal region of the protein sequence according to NP_003387.1.

Please note the [peptide](#) is available for sale.

Purification and Storage

Purified from goat serum by ammonium sulphate precipitation followed by antigen affinity chromatography using the immunizing peptide.

Supplied at 0.5 mg/ml in Tris saline, 0.02% sodium azide, pH7.3 with 0.5% bovine serum albumin.

Aliquot and store at -20°C. Minimize freezing and thawing.

Applications Tested

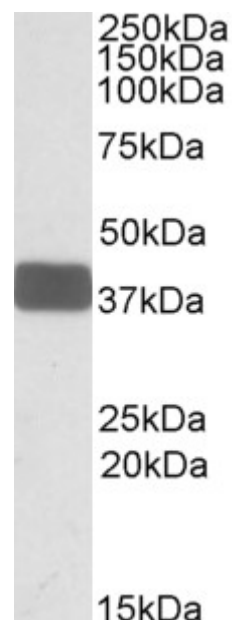
Peptide ELISA: antibody detection limit dilution 1:8000.

Western blot: Approx 38kDa band observed in Human Brain Cerebellum lysates and in Mouse Kidney and Brain lysates (calculated MW of 39kDa according to NP_003387.1).
Recommended concentration: 0.3-1µg/ml.

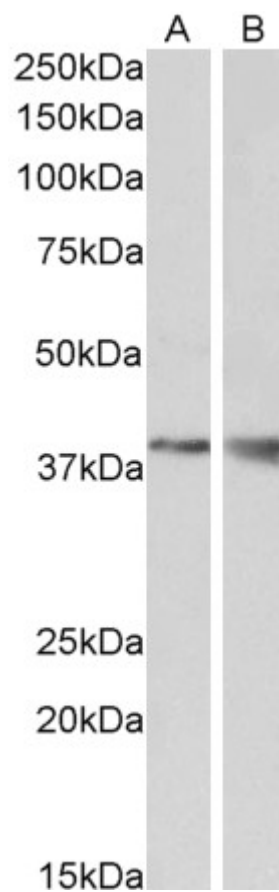
Species Reactivity

Tested: Human, Mouse

Expected from sequence similarity: Human, Mouse, Rat



EB09452 (0.3 μ g/ml) staining of Human Brain Cerebellum lysate (35 μ g protein in RIPA buffer). Primary incubation was 1 hour. Detected by chemiluminescence.



EB09452 (1 μ g/ml) staining of Mouse Kidney (A) and Brain (B) lysate (35 μ g protein in RIPA buffer). Primary incubation was 1 hour. Detected by chemiluminescence.