



## UK Office

### Everest Biotech Ltd

Cherwell Innovation Centre  
77 Heyford Park  
Upper Heyford  
Oxfordshire  
OX25 5HD  
UK

Enquiries:

[info@everestbiotech.com](mailto:info@everestbiotech.com)

Sales:

[sales@everestbiotech.com](mailto:sales@everestbiotech.com)

Tech support:

[support@everestbiotech.com](mailto:support@everestbiotech.com)

Tel: +44 (0)1869 238326

Fax: +44 (0)1869 238327

## US Office

### Everest Biotech c/o Abcore

405 Maple Street, Suite A106  
Ramona,  
CA 92065  
USA

Inquiries:

[info@everestbiotech.com](mailto:info@everestbiotech.com)

Sales:

[usasales@everestbiotech.com](mailto:usasales@everestbiotech.com)

Tech support:

[support@everestbiotech.com](mailto:support@everestbiotech.com)

Tel: 888-320-4628 (toll-free)

Fax: 888-841-9041

[www.everestbiotech.com](http://www.everestbiotech.com)

**Research Use Only. Not for  
diagnostic or therapeutic use.**

## EB07253 - Goat Anti-WNT3 Antibody

Size: 100µg specific antibody in 200µl



### Target Protein

**Principal Names:** WNT3, wingless-type MMTV integration site family, member 3, INT4, MGC131950, MGC138321, MGC138323, WNT-3 proto-oncogene protein precursor

**Official Symbol:** WNT3

**Accession Number(s):** NP\_110380.1

**Human GeneID(s):** [7473](#)

**Non-Human GeneID(s):** 22415 (mouse), 24882 (rat)

### Immunogen

Peptide with sequence CGRGHNTRTEKRKEK, from the internal region of the protein sequence according to NP\_110380.1.

Please note the [peptide](#) is available for sale.

### Purification and Storage

Purified from goat serum by ammonium sulphate precipitation followed by antigen affinity chromatography using the immunizing peptide.

Supplied at 0.5 mg/ml in Tris saline, 0.02% sodium azide, pH7.3 with 0.5% bovine serum albumin.

Aliquot and store at -20°C. Minimize freezing and thawing.

### Applications Tested

**Peptide ELISA:** antibody detection limit dilution 1:16000.

**Western blot:** Approx 40kDa band observed in lysates of cell line HEK293 (calculated MW of 39.6kDa according to NP\_110380.1). Recommended concentration: 1-3µg/ml. Primary incubation was 1 hour.

**IHC:** In paraffin embedded Human Breast shows cytoplasm staining in some luminal epithelial cells. Recommended concentration: 2-4µg/ml.

### Species Reactivity

**Tested:** Human

**Expected from sequence similarity:** Human, Mouse, Rat, Dog

### Specific References

**This antibody (previous batch) has been successfully used in IHC on Rat:**

Wakabayashi T, Hidaka R, Fujimaki S, Asashima M, Kuwabara T.

Diabetes Impairs Wnt3 Protein-induced Neurogenesis in Olfactory Bulbs via Glutamate Transporter  
J Biol Chem. 2016 Jul 15;291(29)

PMID: 27226528

**This antibody (previous batch) has been successfully used in IHC on Mouse:**

Fujimaki S, Hidaka R, Asashima M, Takemasa T, Kuwabara T.

Wnt protein-mediated satellite cell conversion in adult and aged mice following voluntary wheel running.

J Biol Chem. 2014 Mar 14;289(11):7399-412.

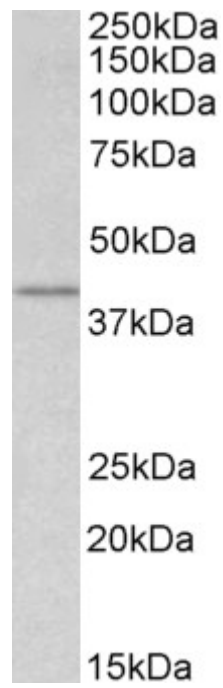
PMID: 24482229

**This antibody (previous batch) has been successfully used in ICC/IF on Mouse:**

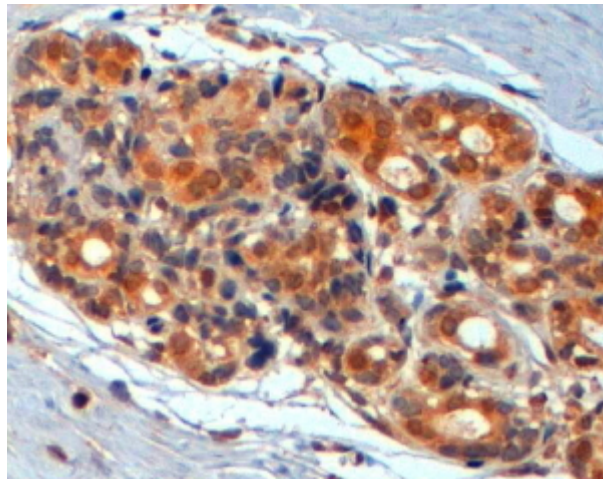
Okamoto M, Inoue K, Iwamura H, Terashima K, Soya H, Asashima M, Kuwabara T.

Reduction in paracrine Wnt3 factors during aging causes impaired adult neurogenesis.  
FASEB J. 2011 Jul 11.





EB07253 (1 $\mu$ g/ml) staining of lysate of cell line HEK293 (35 $\mu$ g protein in RIPA buffer). Detected by chemiluminescence.



EB7253 (2 $\mu$ g/ml) staining of paraffin embedded Human Breast. Steamed antigen retrieval with citrate buffer pH 6, HRP-staining.