



## UK Office

### Everest Biotech Ltd

Cherwell Innovation Centre  
77 Heyford Park  
Upper Heyford  
Oxfordshire  
OX25 5HD  
UK

Enquiries:

[info@everestbiotech.com](mailto:info@everestbiotech.com)

Sales:

[sales@everestbiotech.com](mailto:sales@everestbiotech.com)

Tech support:

[support@everestbiotech.com](mailto:support@everestbiotech.com)

Tel: +44 (0)1869 238326

Fax: +44 (0)1869 238327

## US Office

### Everest Biotech c/o Abcore

405 Maple Street, Suite A106  
Ramona,  
CA 92065  
USA

Inquiries:

[info@everestbiotech.com](mailto:info@everestbiotech.com)

Sales:

[usasales@everestbiotech.com](mailto:usasales@everestbiotech.com)

Tech support:

[support@everestbiotech.com](mailto:support@everestbiotech.com)

Tel: 888-320-4628 (toll-free)

Fax: 888-841-9041

[www.everestbiotech.com](http://www.everestbiotech.com)

**Research Use Only. Not for  
diagnostic or therapeutic use.**

## EB05374-T - Goat Anti-WNT4 Antibody - Trial

Size: 20µg specific antibody in 40µl



### Target Protein

**Principal Names:** WNT4, wingless-type MMTV integration site family, member 4, WNT-4, WNT-4 protein precursor, RP1-224A6.7, SERKAL, WNT-4 protein

**Official Symbol:** WNT4

**Accession Number(s):** NP\_110388.2

**Human GeneID(s):** [54361](#)

**Non-Human GeneID(s):** 22417 (mouse)

### Immunogen

Peptide with sequence C-SNWLYLAKLSSVGS, from the internal region of the protein sequence according to NP\_110388.2.

Please note the [peptide](#) is available for sale.

### Purification and Storage

Purified from goat serum by ammonium sulphate precipitation followed by antigen affinity chromatography using the immunizing peptide.

Supplied at 0.5 mg/ml in Tris saline, 0.02% sodium azide, pH7.3 with 0.5% bovine serum albumin.

Aliquot and store at -20°C. Minimize freezing and thawing.

### Applications Tested

**Peptide ELISA:** antibody detection limit dilution 1:4000.

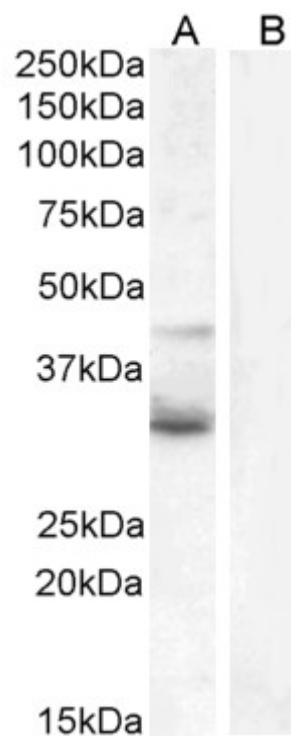
**Western blot:** Approx 40+35kDa band observed in lysates of cell line Jurkat (calculated MW of 39.1kDa according to NP\_110388.2). Recommended concentration: 1-3µg/ml. Primary incubation 1 hour at room temperature. **Negative Control:** U937 cell lysate.

**Immunofluorescence:** Strong expression of the protein seen in the Vesicle of HeLa and MCF7 cells. Recommended concentration: 10µg/ml.

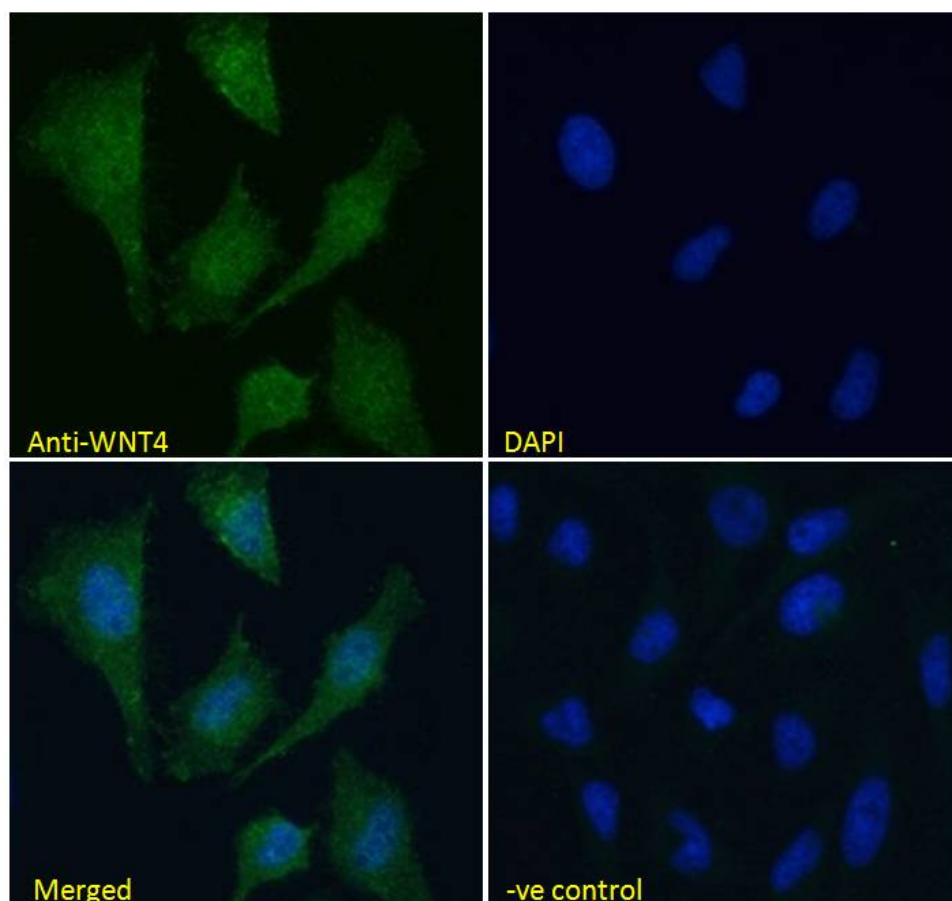
### Species Reactivity

**Tested:** Human

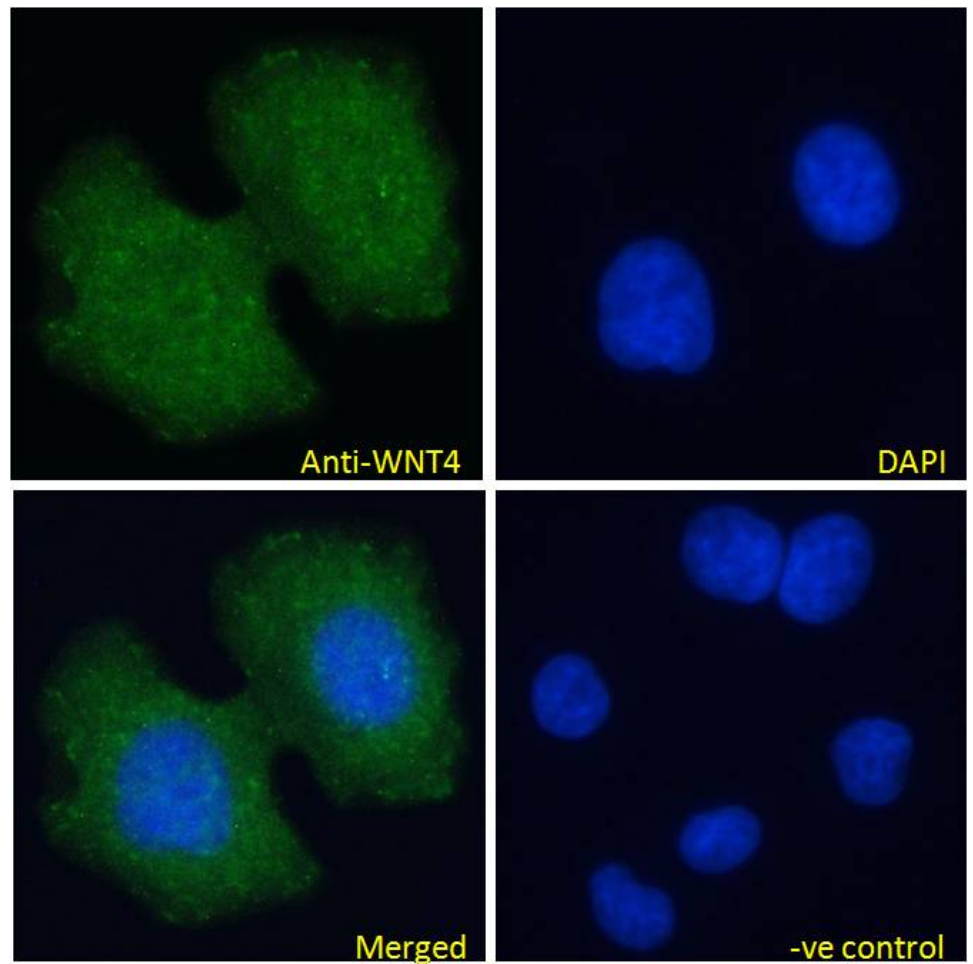
**Expected from sequence similarity:** Human, Mouse, Rat



EB05374 (1 $\mu$ g/ml) staining of Jurkat (A) and negative control U937 (B) cell lysate (35 $\mu$ g protein in RIPA buffer).  
Detected by chemiluminescence.



EB05374 Immunofluorescence analysis of paraformaldehyde fixed HeLa cells, permeabilized with 0.15% Triton.  
Primary incubation 1hr (10 $\mu$ g/ml) followed by Alexa Fluor 488 secondary antibody (4 $\mu$ g/ml), showing vesicle staining. The nuclear stain is DAPI (blue). Negative control: Unimmunized goat IgG (10 $\mu$ g/ml) followed by Alexa Fluor 488 secondary antibody (4 $\mu$ g/ml).



EB05374 Immunofluorescence analysis of paraformaldehyde fixed MCF7 cells, permeabilized with 0.15% Triton. Primary incubation 1hr (10ug/ml) followed by Alexa Fluor 488 secondary antibody (4ug/ml), showing vesicle staining. The nuclear stain is DAPI (blue). Negative control: Unimmunized goat IgG (10ug/ml) followed by Alexa Fluor 488 secondary antibody (4ug/ml).