



## UK Office

### Everest Biotech Ltd

Cherwell Innovation Centre  
77 Heyford Park  
Upper Heyford  
Oxfordshire  
OX25 5HD  
UK

Enquiries:

[info@everestbiotech.com](mailto:info@everestbiotech.com)

Sales:

[sales@everestbiotech.com](mailto:sales@everestbiotech.com)

Tech support:

[support@everestbiotech.com](mailto:support@everestbiotech.com)

Tel: +44 (0)1869 238326

Fax: +44 (0)1869 238327

## US Office

### Everest Biotech c/o Abcore

405 Maple Street, Suite A106  
Ramona,  
CA 92065  
USA

Inquiries:

[info@everestbiotech.com](mailto:info@everestbiotech.com)

Sales:

[usasales@everestbiotech.com](mailto:usasales@everestbiotech.com)

Tech support:

[support@everestbiotech.com](mailto:support@everestbiotech.com)

Tel: 888-320-4628 (toll-free)

Fax: 888-841-9041

[www.everestbiotech.com](http://www.everestbiotech.com)

**Research Use Only. Not for  
diagnostic or therapeutic use.**

## EB06923 - Goat Anti-ZASP/ CYPHER / LDB3 Antibody

Size: 100µg specific antibody in 200µl



### Target Protein

**Principal Names:** LDB3, ZASP, LIM domain binding 3, HGNC:15710, KIAA01613, KIAA0613, ORACLE, PDLIM6, PDZ and LIM domain 6, Z-band alternatively spliced PDZ-motif, CYPHER, FLJ35865, ldb3z1, ldb3z4

**Official Symbol:** LDB3

**Accession Number(s):** NP\_009009.1; NP\_001073583.1; NP\_001073584.1;  
NP\_001073585.1

**Human GeneID(s):** [11155](#)

### Immunogen

Peptide with sequence C-KSQNKPEDEADE, from the internal region of the protein sequence according to NP\_009009.1; NP\_001073583.1; NP\_001073584.1;  
NP\_001073585.1.

Please note the [peptide](#) is available for sale.

### Purification and Storage

Purified from goat serum by ammonium sulphate precipitation followed by antigen affinity chromatography using the immunizing peptide.

Supplied at 0.5 mg/ml in Tris saline, 0.02% sodium azide, pH7.3 with 0.5% bovine serum albumin.

Aliquot and store at -20°C. Minimize freezing and thawing.

### Applications Tested

**Peptide ELISA:** antibody detection limit dilution 1:1000.

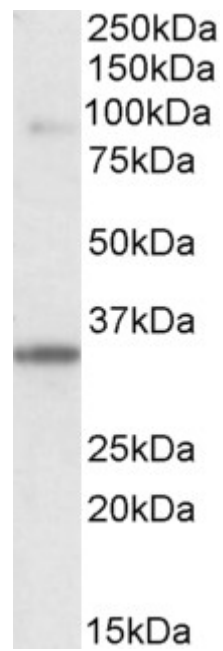
**Western blot:** Western Blot experiments gave bands at approx 90kDa and 35kDa in Human Skeletal Muscle lysate after 1µg/ml antibody staining. These bands correspond to earlier findings in literature with different antibodies (Huang et al J Biol Chem. 2003 Feb 28;278(9):7360-5; PMID: 12499364). This protein has a calculated MW of 77.1kDa according to NP\_009009.1. Recommended concentration: 0.1-1µg/ml.

**IHC:** Paraffin embedded Human Heart. Recommended concentration: 6-7µg/ml.

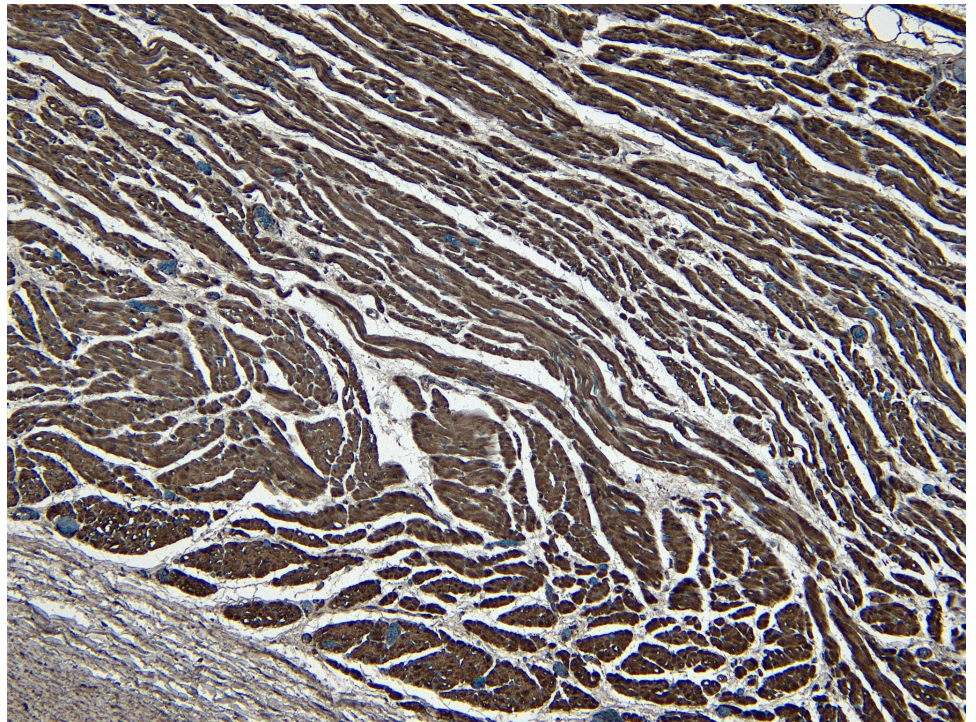
### Species Reactivity

**Tested:** Human

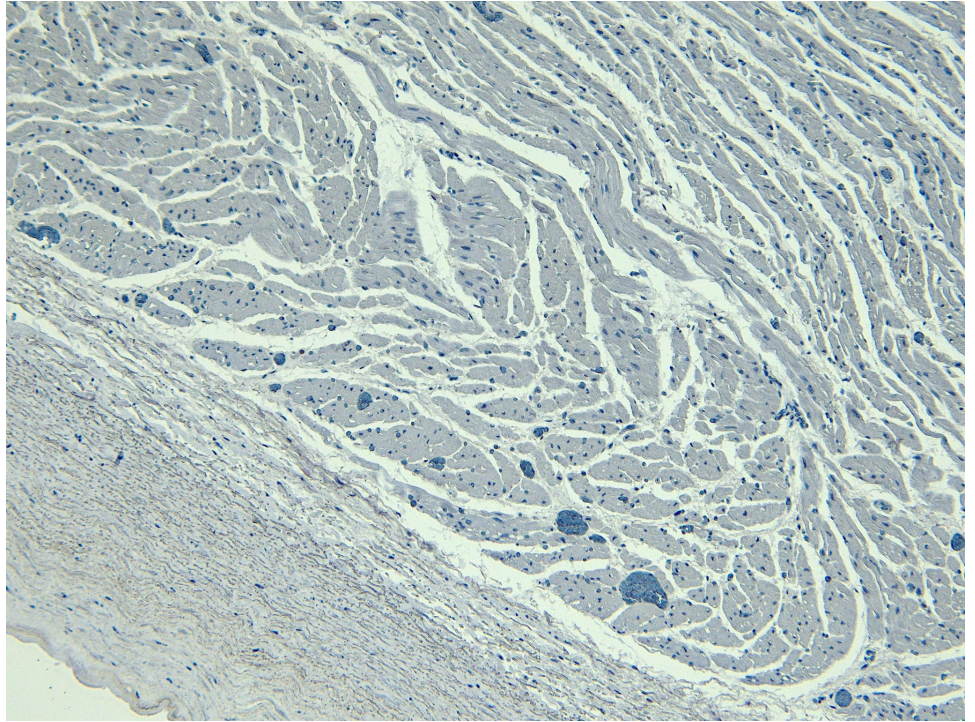
**Expected from sequence similarity:** Human, Mouse, Rat, Dog, Pig



EB06923 (0.1µg/ml) staining of Human Skeletal Muscle lysate (35µg protein in RIPA buffer). Primary incubation was 1 hour. Detected by chemiluminescence.



EB06923 (6µg/ml) staining of paraffin embedded Human Heart. Heat induced antigen retrieval with citrate buffer pH 6, HRP-staining.



EB06923 Negative Control showing staining of paraffin embedded Human Heart, with no primary antibody.