



UK Office

Everest Biotech Ltd

Cherwell Innovation Centre
77 Heyford Park
Upper Heyford
Oxfordshire
OX25 5HD
UK

Enquiries:

info@everestbiotech.com

Sales:

sales@everestbiotech.com

Tech support:

support@everestbiotech.com

Tel: +44 (0)1869 238326

www.everestbiotech.com

**Research Use Only. Not for
diagnostic or therapeutic use.**

EB11414 - Goat Anti-ZBTB24 (aa232-245) Antibody

Size: 100µg specific antibody in 200µl



Target Protein

Principal Names: BIF1, ICF2, OTTHUMP00000016968, PATZ2, POZ (BTB) and AT hook containing zinc finger 2, zinc finger and BTB domain containing 24, zinc finger and BTB domain-containing protein 24, zinc finger protein 450, ZNF450, ZBTB24

Official Symbol: ZBTB24

Accession Number(s): NP_055612.2; NP_001157785.1

Human GeneID(s): [9841](#)

Important Comments: This antibody is expected to recognize both reported isoforms (NP_055612.2; NP_001157785.1).

Immunogen

Peptide with sequence C-PVEKDENYDPKTED, from the internal region of the protein sequence according to NP_055612.2; NP_001157785.1.

Please note the [peptide](#) is available for sale.

Purification and Storage

Purified from goat serum by ammonium sulphate precipitation followed by antigen affinity chromatography using the immunizing peptide.

Supplied at 0.5 mg/ml in Tris saline, 0.02% sodium azide, pH7.3 with 0.5% bovine serum albumin.

Aliquot and store at -20°C. Minimize freezing and thawing.

Applications Tested

Peptide ELISA: antibody detection limit dilution 1:8000.

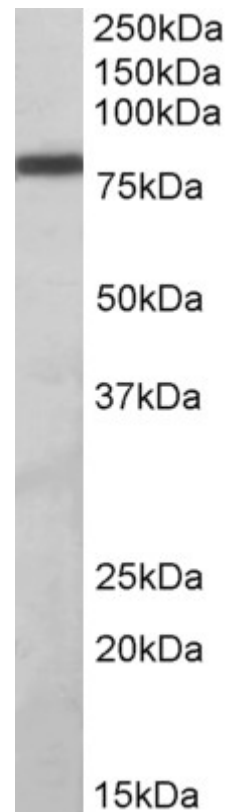
Western blot: Approx 80kDa band observed in lysates of cell line Daudi (calculated MW of 78.3kDa according to NP_055612.2). Recommended concentration: 1-3µg/ml. Primary incubation was 1 hour.

IHC: Paraffin embedded Human Prostate. Recommended concentration: 5µg/ml.

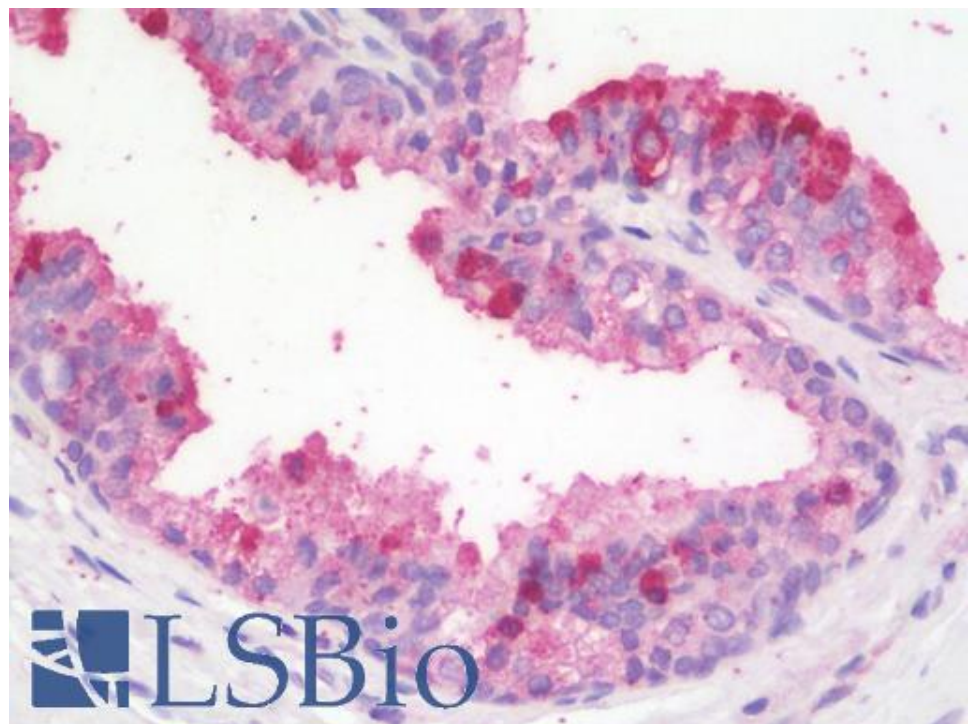
Species Reactivity

Tested: Human

Expected from sequence similarity: Human



EB11414 (1 μ g/ml) staining of Daudi lysate (35 μ g protein in RIPA buffer). Detected by chemiluminescence.



EB11414 (5 μ g/ml) staining of paraffin embedded Human Prostate. Steamed antigen retrieval with citrate buffer pH 6, AP-staining.