

UK Office

Everest Biotech Ltd

Cherwell Innovation Centre
77 Heyford Park
Upper Heyford
Oxfordshire
OX25 5HD
UK

Enquiries:

info@everestbiotech.com

Sales:

sales@everestbiotech.com

Tech support:

support@everestbiotech.com

Tel: +44 (0)1869 238326

www.everestbiotech.com

**Research Use Only. Not for
diagnostic or therapeutic use.**

EB10810 - Goat Anti-ZIC2 Antibody

Size: 100µg specific antibody in 200µl



Target Protein

Principal Names: ZIC2, Zic family member 2 (odd-paired homolog, Drosophila), HPE5, Zic family member 2 (odd-paired Drosophila homolog), Zinc finger protein of the cerebellum 2, zinc finger protein ZIC 2

Official Symbol: ZIC2

Accession Number(s): NP_009060.2

Human GeneID(s): [7546](#)

Non-Human GeneID(s): 22772 (mouse), 361096 (rat)

Important Comments: This antibody is expected to NOT cross-react with other ZIC proteins.

Immunogen

Peptide with sequence C-HSGLSSNFNEWY, from the C Terminus of the protein sequence according to NP_009060.2.

Please note the [peptide](#) is available for sale.

Purification and Storage

Purified from goat serum by ammonium sulphate precipitation followed by antigen affinity chromatography using the immunizing peptide.

Supplied at 0.5 mg/ml in Tris saline, 0.02% sodium azide, pH7.3 with 0.5% bovine serum albumin.

Aliquot and store at -20°C. Minimize freezing and thawing.

Applications Tested

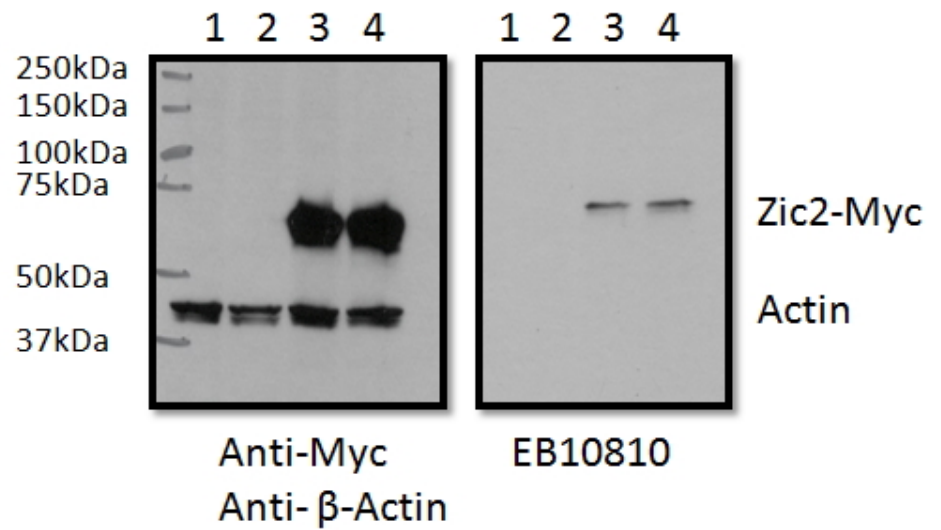
Peptide ELISA: antibody detection limit dilution 1:1000.

Western blot: In transfected RWPE1 transiently expressing Human ZIC2-Myc a band of approx. 65kDa is observed. This band is not observed in the non-transfected RWPE1, nor when GFP is transiently expressed (calculated Mwt. of 55.0kDa according to NP_009060.2 and 58.6kDa for the ZIC2-Myc protein). Recommended concentration, 0.5-2µg/ml. Primary incubation overnight at 4°C Data kindly provided by Nathan Bowen and Maryam Boseman, Clark Atlanta University, GA, USA..

Species Reactivity

Tested: Human

Expected from sequence similarity: Human, Mouse, Rat, Dog, Cow



EB10810 RWPE1 lysate (60ug protein in RIPA buffer) overexpressing Human ZIC2 with C-terminal MYC tag probed with EB10810 (0.5ug/ml) in the right panel and probed with anti-MYC Tag (1/1000) and anti-beta-Actin in the left panel. Mock-transfected RWPE1 in lanes 1 and expressing GFP in lanes 2. Detected by chemiluminescence.