



## UK Office

### Everest Biotech Ltd

Cherwell Innovation Centre  
77 Heyford Park  
Upper Heyford  
Oxfordshire  
OX25 5HD  
UK

Enquiries:

[info@everestbiotech.com](mailto:info@everestbiotech.com)

Sales:

[sales@everestbiotech.com](mailto:sales@everestbiotech.com)

Tech support:

[support@everestbiotech.com](mailto:support@everestbiotech.com)

Tel: +44 (0)1869 238326

[www.everestbiotech.com](http://www.everestbiotech.com)

**Research Use Only. Not for  
diagnostic or therapeutic use.**

## EB11188 - Goat Anti-ZNF652 (aa594-606) Antibody

Size: 100µg specific antibody in 200µl

### Target Protein

**Principal Names:** DKFZp781E2122, KIAA0924, OTTHUMP00000220047, zinc finger protein 652, ZNF652

**Official Symbol:** ZNF652

**Accession Number(s):** NP\_055712.1

**Human GeneID(s):** [22834](#)

**Important Comments:** Reported variants represent identical protein: NP\_055712.1, NP\_001138837.1

### Immunogen

Peptide with sequence C-RHLAEKNSSAQHH, from the C Terminus of the protein sequence according to NP\_055712.1.

Please note the [peptide](#) is available for sale.

### Purification and Storage

Purified from goat serum by ammonium sulphate precipitation followed by antigen affinity chromatography using the immunizing peptide.

Supplied at 0.5 mg/ml in Tris saline, 0.02% sodium azide, pH7.3 with 0.5% bovine serum albumin.

Aliquot and store at -20°C. Minimize freezing and thawing.

### Applications Tested

**Peptide ELISA:** antibody detection limit dilution 1:64000.

**Western blot:** Approx 90kDa band observed in Human Heart, Kidney and Liver lysates (calculated MW of 69.7kDa according to NP\_055712.1). The observed molecular weight corresponds to earlier findings in literature with different antibodies (Kumar et al, Mol Cancer Res. 2006 Sep;4(9):655-65.PMID: 1696643). Recommended concentration: 0.01-0.03µg/ml. Primary incubation was 1 hour.

**IHC:** Paraffin embedded Human Small Intestine. Recommended concentration: 5µg/ml.

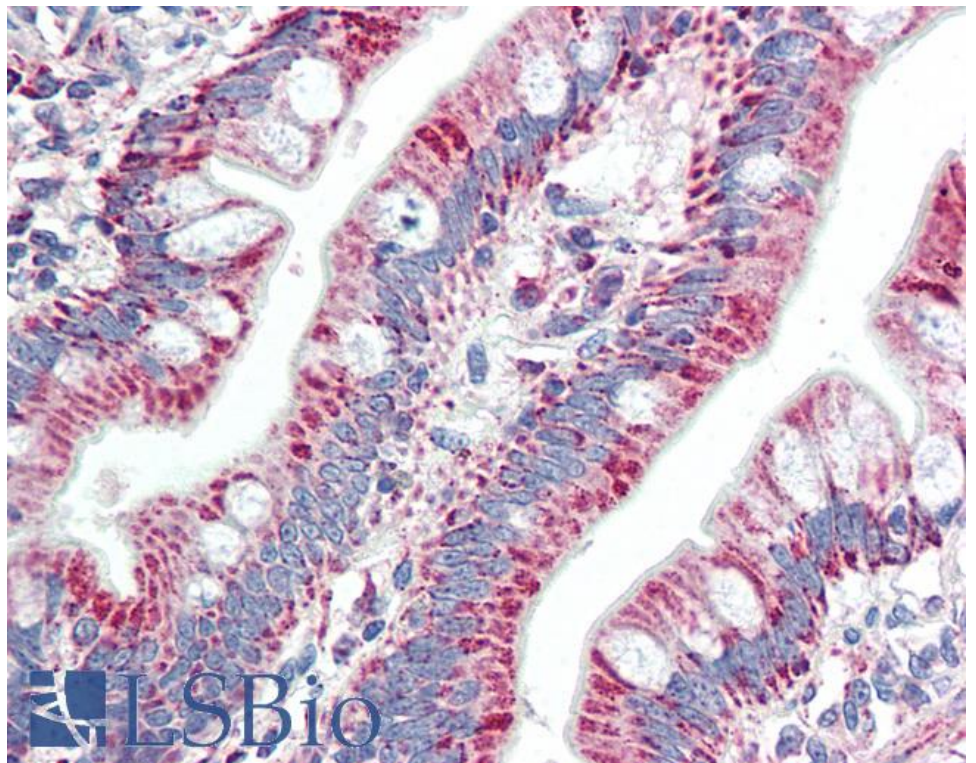
### Species Reactivity

**Tested:** Human

**Expected from sequence similarity:** Human, Cow, Pig



EB11188 (0.01µg/ml) staining of Human Heart lysate (35µg protein in RIPA buffer). Detected by chemiluminescence.



EB11188 (5µg/ml) staining of paraffin embedded Human Small Intestine. Steamed antigen retrieval with citrate buffer pH 6, AP-staining.