



UK Office

Everest Biotech Ltd

Cherwell Innovation Centre
77 Heyford Park
Upper Heyford
Oxfordshire
OX25 5HD
UK

Enquiries:

info@everestbiotech.com

Sales:

sales@everestbiotech.com

Tech support:

support@everestbiotech.com

Tel: +44 (0)1869 238326

Fax: +44 (0)1869 238327

US Office

Everest Biotech c/o Abcore

405 Maple Street, Suite A106
Ramona,
CA 92065
USA

Inquiries:

info@everestbiotech.com

Sales:

usasales@everestbiotech.com

Tech support:

support@everestbiotech.com

Tel: 888-320-4628 (toll-free)

Fax: 888-841-9041

www.everestbiotech.com

**Research Use Only. Not for
diagnostic or therapeutic use.**

EB07220 - Goat Anti-ZNF9 / CNBP Antibody

Size: 100µg specific antibody in 200µl



Target Protein

Principal Names: ZNF9, CNBP, zinc finger protein 9 (a cellular retroviral nucleic acid binding protein), HGNC:13164, CNBP1, DM2, PROMM, RNF163, Proximal myotonic myopathy nucleic acid binding protein, zinc finger protein 273, zinc finger protein 9

Official Symbol: CNBP

Accession Number(s): NP_003409.1;; NP_001120664.1;
NP_001120665.1;NP_001120666.1

Human GeneID(s): [7555](#)

Immunogen

Peptide with sequence GESGHLARECTIE, from the C Terminus of the protein sequence according to NP_003409.1;; NP_001120664.1; NP_001120665.1;NP_001120666.1.

Please note the [peptide](#) is available for sale.

Purification and Storage

Purified from goat serum by ammonium sulphate precipitation followed by antigen affinity chromatography using the immunizing peptide.

Supplied at 0.5 mg/ml in Tris saline, 0.02% sodium azide, pH7.3 with 0.5% bovine serum albumin.

Aliquot and store at -20°C. Minimize freezing and thawing.

Applications Tested

Peptide ELISA: antibody detection limit dilution 1:8000.

Western blot: Approx 20kDa band observed in Human Skeletal Muscle lysates and in lysates of cell lines Daudi, MCF7, MOLT-4 and Neuro-2a (calculated MW of 19.5kDa according to Human NP_003409.1 and Mouse NP_038521.1). Recommended concentration: 0.3-1µg/ml. Primary incubation 1 hour at room temperature.

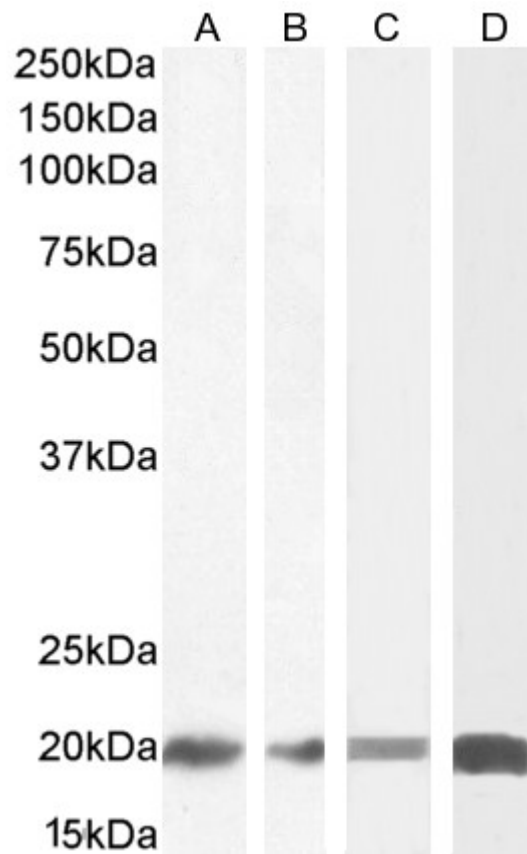
Immunofluorescence: Strong expression of the protein seen in MCF7 and Neuro-2a cells. Recommended concentration: 10µg/ml.

Flow Cytometry: Flow cytometric analysis of MCF7 cells. Recommended concentration: 10ug/ml.

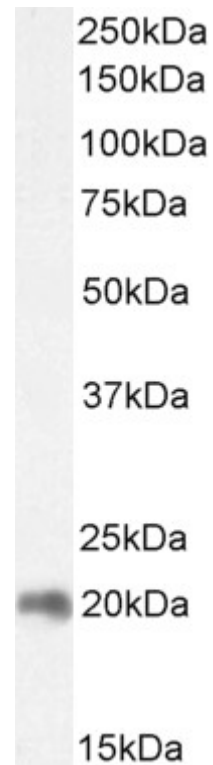
Species Reactivity

Tested: Human, Mouse

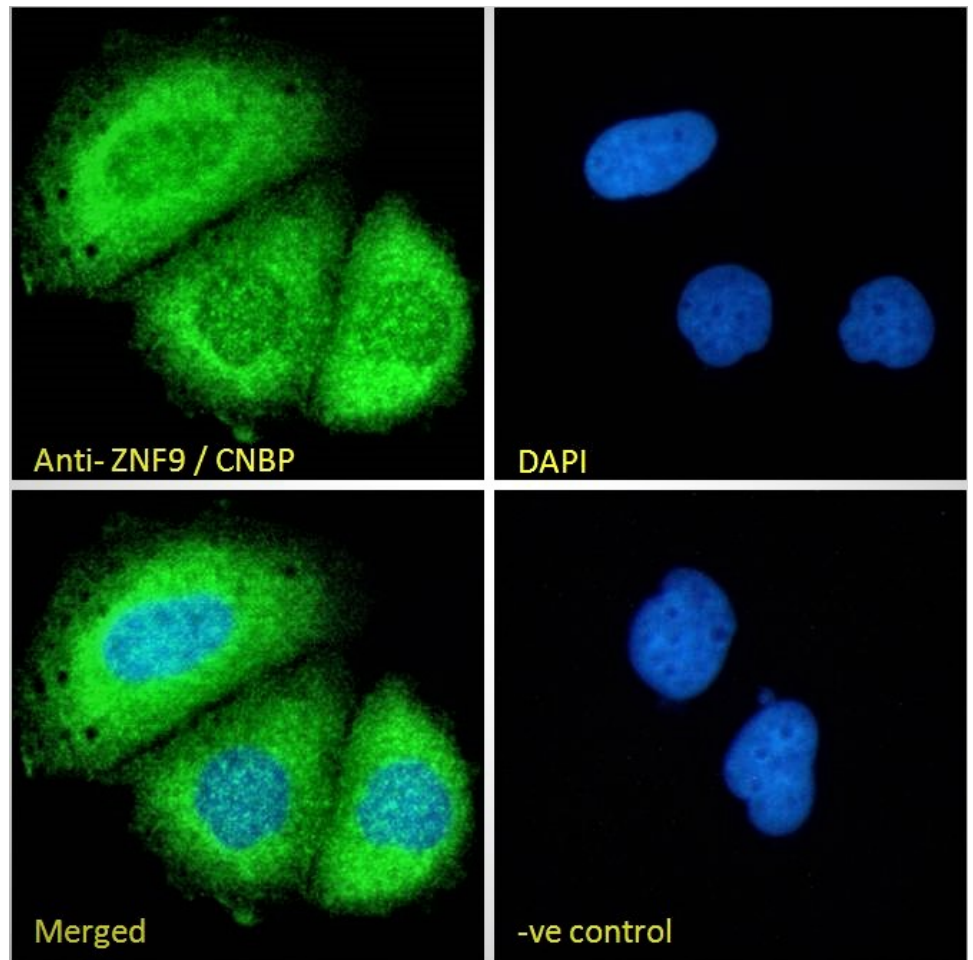
Expected from sequence similarity: Human, Mouse, Rat, Dog, Cow



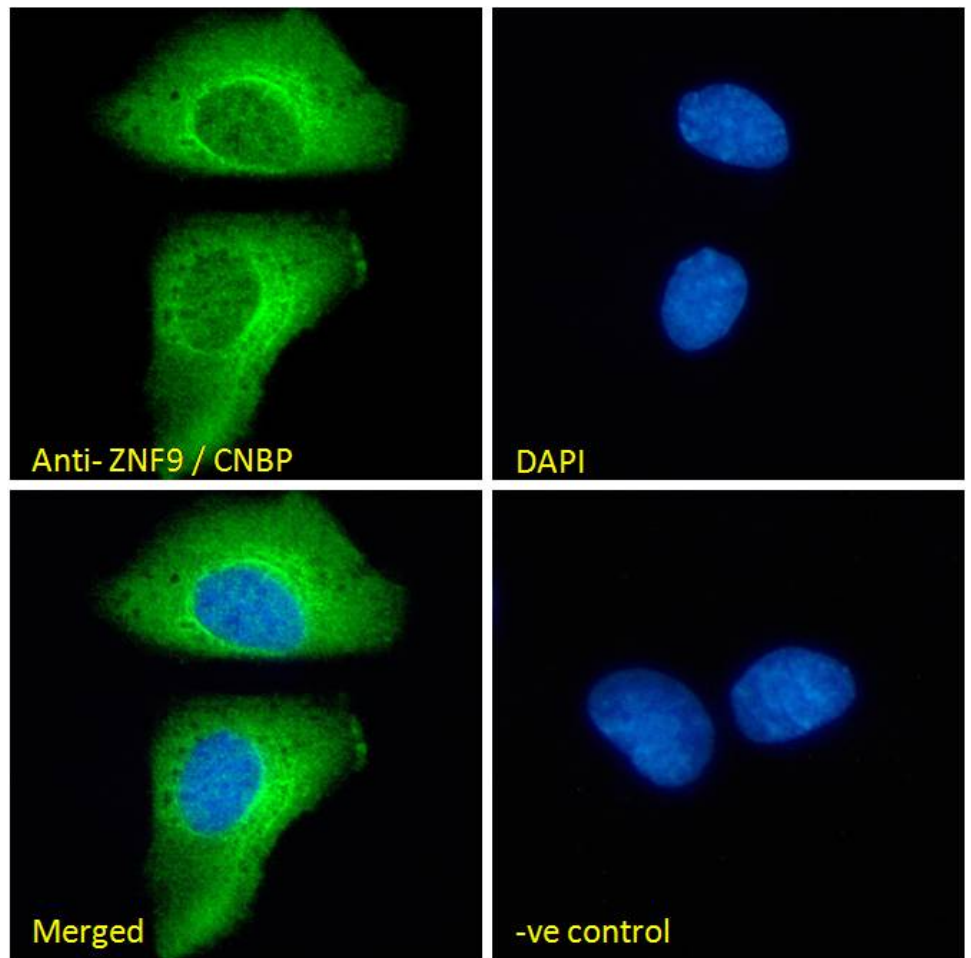
EB07220 (1 μ g/ml) staining of Daudi (A), MOLT-4 (B), MCF7 (C), and Neuro2a (D) cell lysate (35 μ g protein in RIPA buffer). Detected by chemiluminescence.



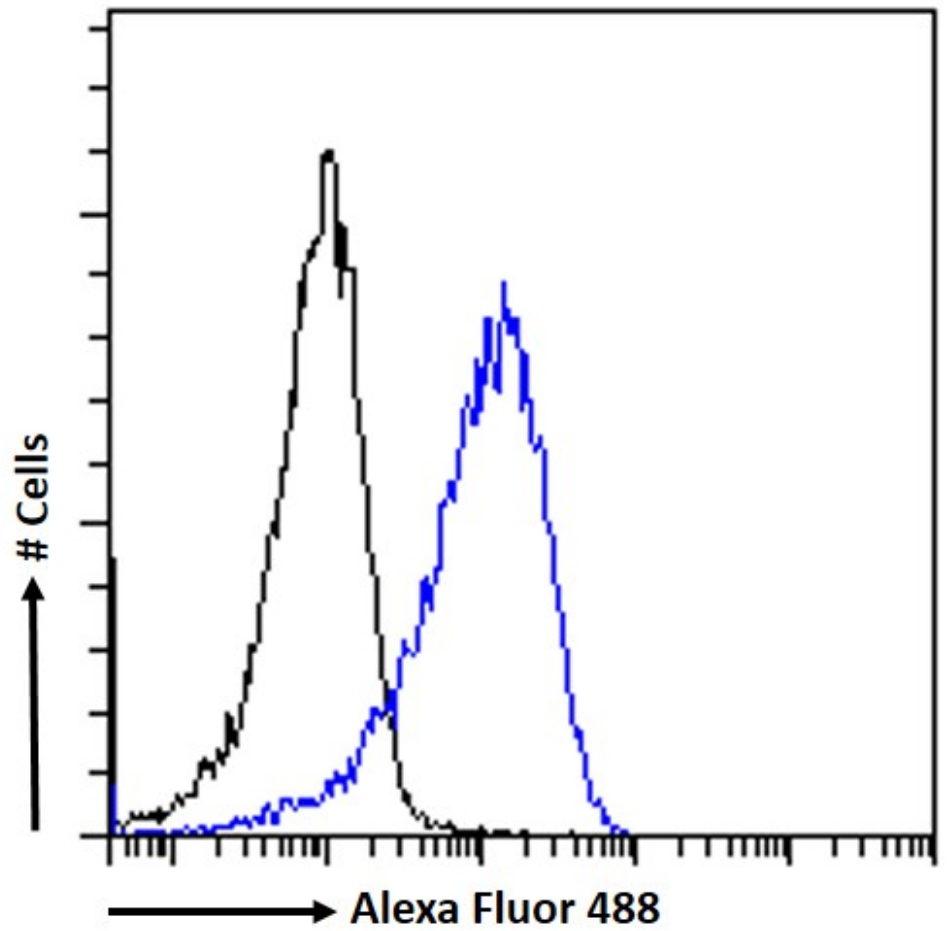
EB07220 (1 μ g/ml) staining of Human Skeletal Muscle lysate (35 μ g protein in RIPA buffer). Detected by chemiluminescence.



EB07220 Immunofluorescence analysis of paraformaldehyde fixed MCF7 cells, permeabilized with 0.15% Triton. Primary incubation 1hr (10ug/ml) followed by Alexa Fluor 488 secondary antibody (2ug/ml), showing cytoplasmic and some nuclear staining. The nuclear stain is DAPI (blue). Negative control: Unimmunized goat IgG (10ug/ml) followed by Alexa Fluor 488 secondary antibody (2ug/ml).



EB07220 Immunofluorescence analysis of paraformaldehyde fixed Neuro-2a cells, permeabilized with 0.15% Triton. Primary incubation 1hr (10ug/ml) followed by Alexa Fluor 488 secondary antibody (2ug/ml), showing cytoplasmic staining. The nuclear stain is DAPI (blue). Negative control: Unimmunized goat IgG (10ug/ml) followed by Alexa Fluor 488 secondary antibody (2ug/ml).



EB07220 Flow cytometric analysis of paraformaldehyde fixed MCF7 cells (blue line), permeabilized with 0.5% Triton. Primary incubation 1hr (10ug/ml) followed by Alexa Fluor 488 secondary antibody (1ug/ml). IgG control: Unimmunized goat IgG (black line) followed by Alexa Fluor 488 secondary antibody.