

## UK Office

### Everest Biotech Ltd

Cherwell Innovation Centre  
77 Heyford Park  
Upper Heyford  
Oxfordshire  
OX25 5HD  
UK

Enquiries:

[info@everestbiotech.com](mailto:info@everestbiotech.com)

Sales:

[sales@everestbiotech.com](mailto:sales@everestbiotech.com)

Tech support:

[support@everestbiotech.com](mailto:support@everestbiotech.com)

Tel: +44 (0)1869 238326

[www.everestbiotech.com](http://www.everestbiotech.com)

**Research Use Only. Not for  
diagnostic or therapeutic use.**

## EB09206 - Goat Anti-ZO-1 Antibody

Size: 100µg specific antibody in 200µl



### Target Protein

**Principal Names:** TJP1, tight junction protein 1 (zona occludens 1), DKFZp686M05161, MGC133289, ZO-1, OTTHUMP00000174520, tight junction protein 1, tight junction protein ZO-1, zona occludens 1, zonula occludens 1 protein

**Official Symbol:** TJP1

**Accession Number(s):** NP\_003248.3; NP\_783297.2

**Human GeneID(s):** [7082](#)

**Important Comments:** This antibody is expected to recognize both reported isoforms (NP\_003248.3; NP\_783297.2)

### Immunogen

Peptide with sequence C-PKPTSQNFSEHDKT, from the internal region of the protein sequence according to NP\_003248.3; NP\_783297.2.

Please note the [peptide](#) is available for sale.

### Purification and Storage

Purified from goat serum by ammonium sulphate precipitation followed by antigen affinity chromatography using the immunizing peptide.

Supplied at 0.5 mg/ml in Tris saline, 0.02% sodium azide, pH7.3 with 0.5% bovine serum albumin.

Aliquot and store at -20°C. Minimize freezing and thawing.

### Applications Tested

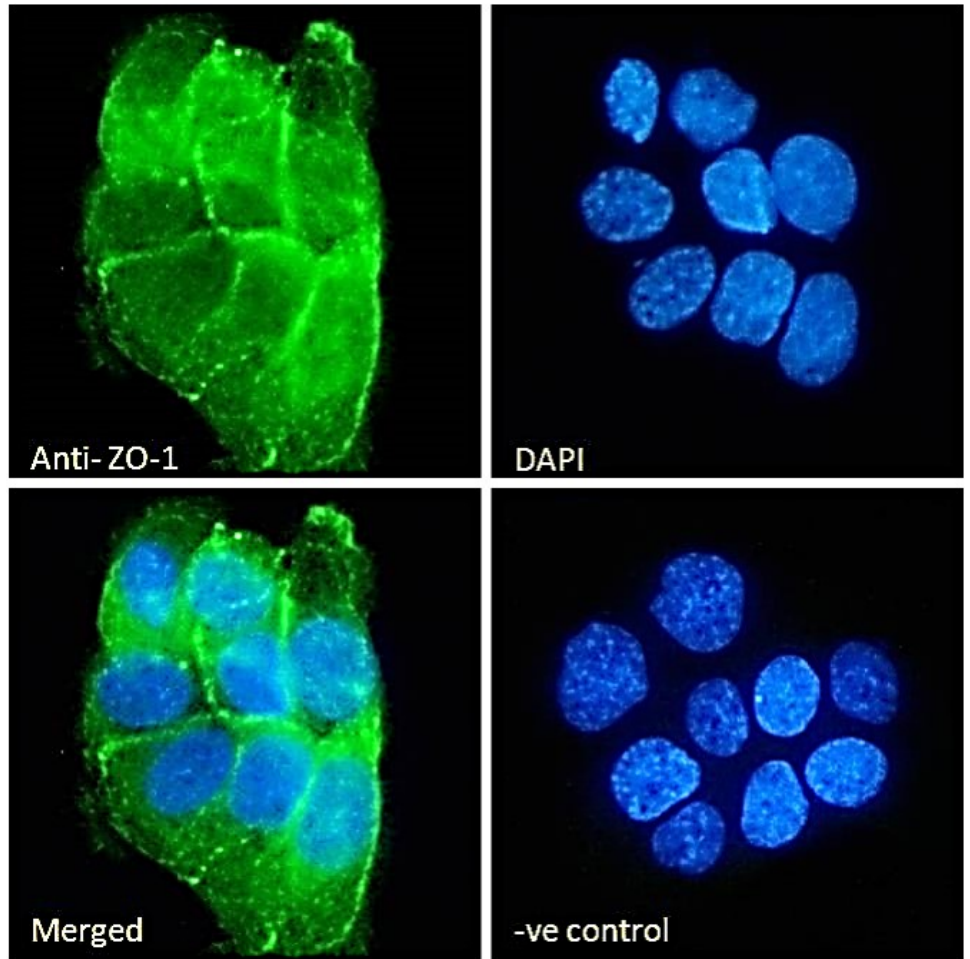
**Peptide ELISA:** antibody detection limit dilution 1:32000.

**Immunofluorescence:** Strong expression of the protein seen in the cellular junction of A431 cells, and in the plasma membrane and cytoplasm of U251 cells. Recommended concentration: 10µg/ml.

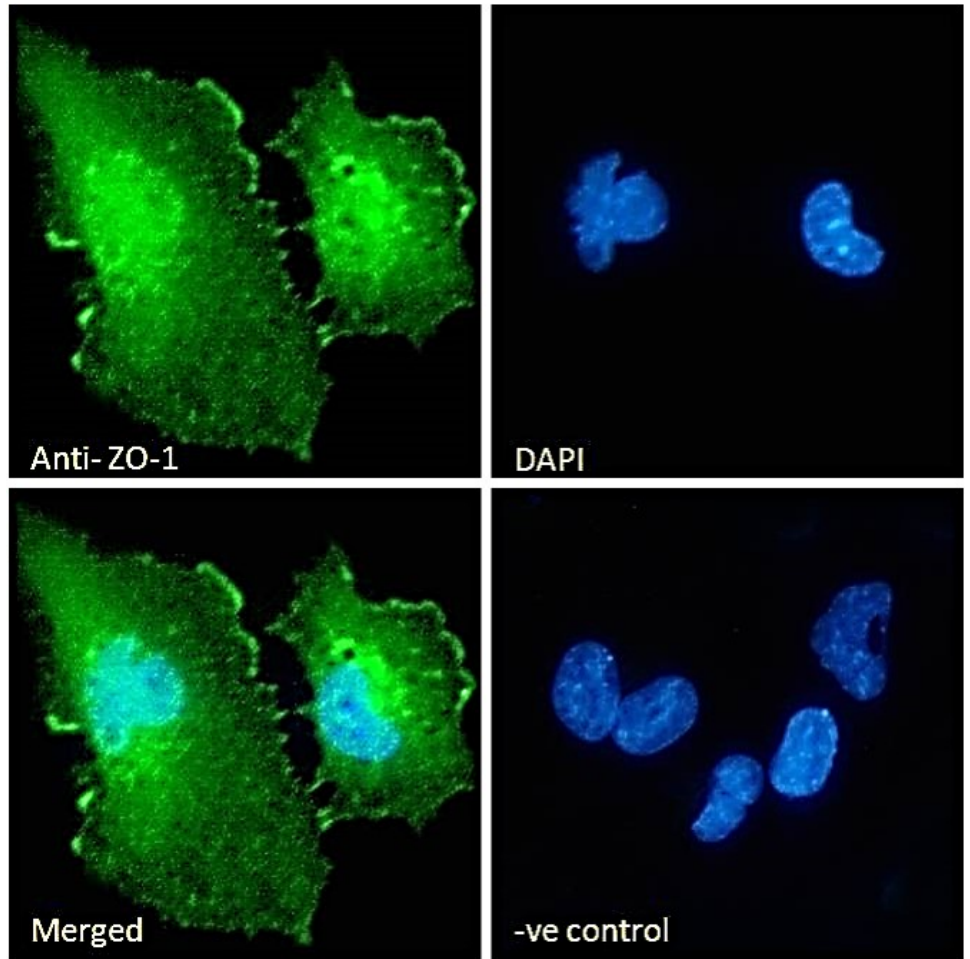
### Species Reactivity

**Tested:** Human

**Expected from sequence similarity:** Human



EB09206 Immunofluorescence analysis of paraformaldehyde fixed A431 cells, permeabilized with 0.15% Triton. Primary incubation 1hr (10ug/ml) followed by Alexa Fluor 488 secondary antibody (2ug/ml), showing cellular junction staining. The nuclear stain is DAPI (blue). Negative control: Unimmunized goat IgG (10ug/ml) followed by Alexa Fluor 488 secondary antibody (2ug/ml).



EB09206 Immunofluorescence analysis of paraformaldehyde fixed U251 cells, permeabilized with 0.15% Triton. Primary incubation 1hr (10ug/ml) followed by Alexa Fluor 488 secondary antibody (2ug/ml), showing membrane, cytoplasmic and nuclear staining. The nuclear stain is DAPI (blue) Negative control: Unimmunized goat IgG (10ug/ml) followed by Alexa Fluor 488 secondary antibody (2ug/ml).