



UK Office

Everest Biotech Ltd

Cherwell Innovation Centre
77 Heyford Park
Upper Heyford
Oxfordshire
OX25 5HD
UK

Enquiries:

info@everestbiotech.com

Sales:

sales@everestbiotech.com

Tech support:

support@everestbiotech.com

Tel: +44 (0)1869 238326

Fax: +44 (0)1869 238327

US Office

Everest Biotech c/o Abcore

405 Maple Street, Suite A106
Ramona,
CA 92065
USA

Inquiries:

info@everestbiotech.com

Sales:

usasales@everestbiotech.com

Tech support:

support@everestbiotech.com

Tel: 888-320-4628 (toll-free)

Fax: 888-841-9041

www.everestbiotech.com

**Research Use Only. Not for
diagnostic or therapeutic use.**

EB09730 - Goat Anti-ZYX Antibody

Size: 100µg specific antibody in 200µl



Target Protein

Principal Names: ZYX, zyxin, ESP-2, HED-2

Official Symbol: ZYX

Accession Number(s): NP_003452.1

Human GeneID(s): [7791](#)

Important Comments: Reported variants represent identical protein: NP_003452.1, NP_001010972.1

Immunogen

Peptide with sequence C-QQREKPRVQEKQH, from the internal region of the protein sequence according to NP_003452.1.

Please note the [peptide](#) is available for sale.

Purification and Storage

Purified from goat serum by ammonium sulphate precipitation followed by antigen affinity chromatography using the immunizing peptide.

Supplied at 0.5 mg/ml in Tris saline, 0.02% sodium azide, pH7.3 with 0.5% bovine serum albumin.

Aliquot and store at -20°C. Minimize freezing and thawing.

Applications Tested

Peptide ELISA: antibody detection limit dilution 1:4000.

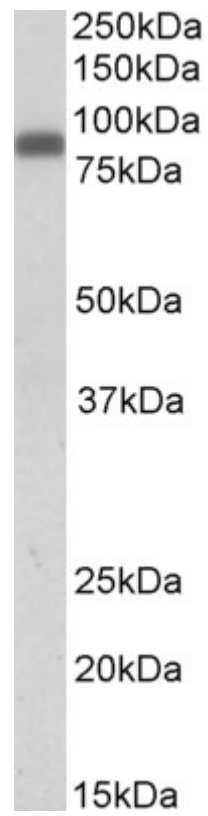
Western blot: Approx 85kDa band observed in Human Peripheral Blood

Mononucleocytes lysates (calculated MW of 61.3kDa according to NP_003452.1). This molecular weight is routinely observed by other sources. Recommended concentration: 0.1-0.3µg/ml.

Species Reactivity

Tested: Human

Expected from sequence similarity: Human, Dog



EB09730 (0.1µg/ml) staining of Peripheral Blood Mononucleocytes lysate (35µg protein in RIPA buffer). Primary incubation was 1 hour. Detected by chemiluminescence.