



UK Office

Everest Biotech Ltd

Cherwell Innovation Centre
77 Heyford Park
Upper Heyford
Oxfordshire
OX25 5HD
UK

Enquiries:

info@everestbiotech.com

Sales:

sales@everestbiotech.com

Tech support:

support@everestbiotech.com

Tel: +44 (0)1869 238326

Fax: +44 (0)1869 238327

US Office

Everest Biotech c/o Abcore

405 Maple Street, Suite A106
Ramona,
CA 92065
USA

Inquiries:

info@everestbiotech.com

Sales:

usasales@everestbiotech.com

Tech support:

support@everestbiotech.com

Tel: 888-320-4628 (toll-free)

Fax: 888-841-9041

www.everestbiotech.com

**Research Use Only. Not for
diagnostic or therapeutic use.**

SB-SHIFIX50 - SB-SHIFIX50 Coverslips

Size: Pack of 50

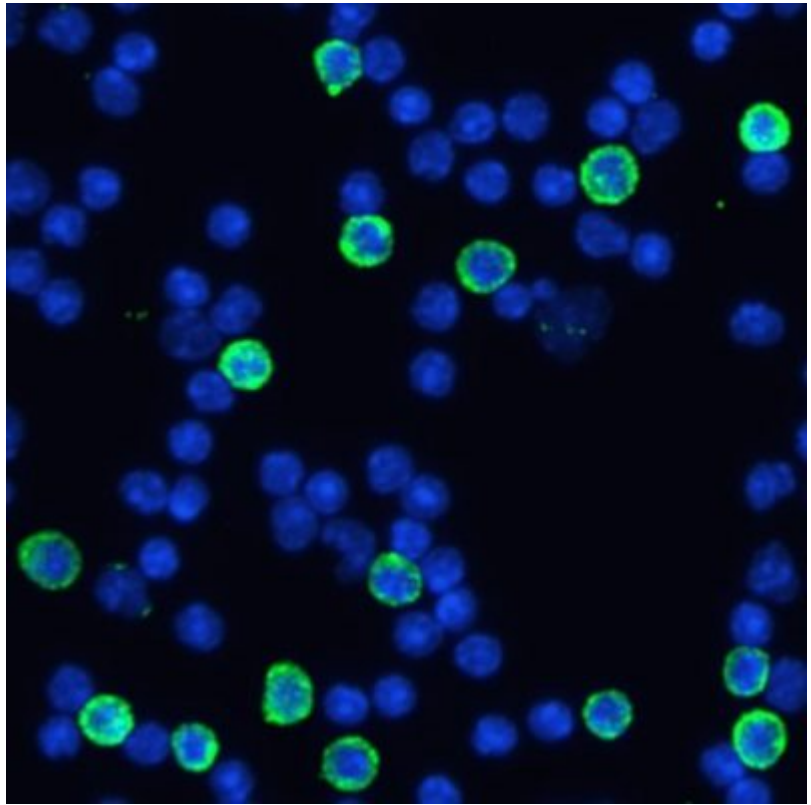
Shi-fix™ coverslips

Do you wish immunofluorescence of suspension cells was as easy as with adherent cells? Now it is! Shi-fix™ (manufactured by Shikhar Biotech) cover-slips allow suspension cells to be layered on them or directly grown as a monolayer. Easy, hassle-free protocol and no spin columns needed for fixing suspension cells to slides. Just add your cells to the coverslips, wait for 30 mins, wash unbound cells with PBS and proceed to immunostaining (or continue the culture to obtain desired cell densities).

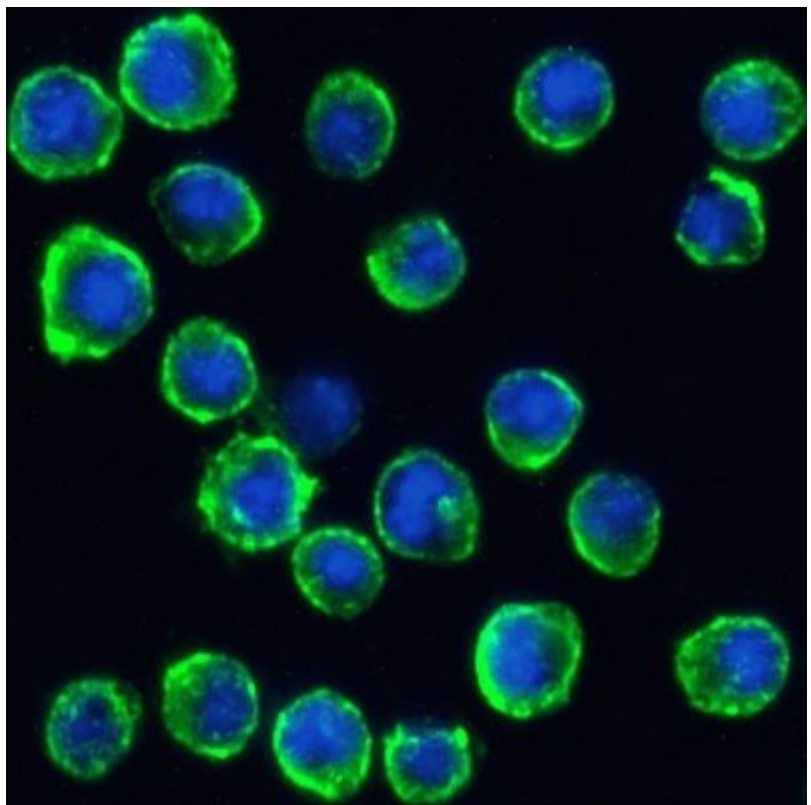
These cover-slips can also be used for staining suspension cells for microscopy, or for fixing suspension cells for confocal microscopy. What's more, you can also stimulate the cells while they are attached on the cover-slip, should you need to do so. You can work on non-adherent cells as if they were adherent!

Suspension cell immunofluorescence with Shi-fix™ coverslips

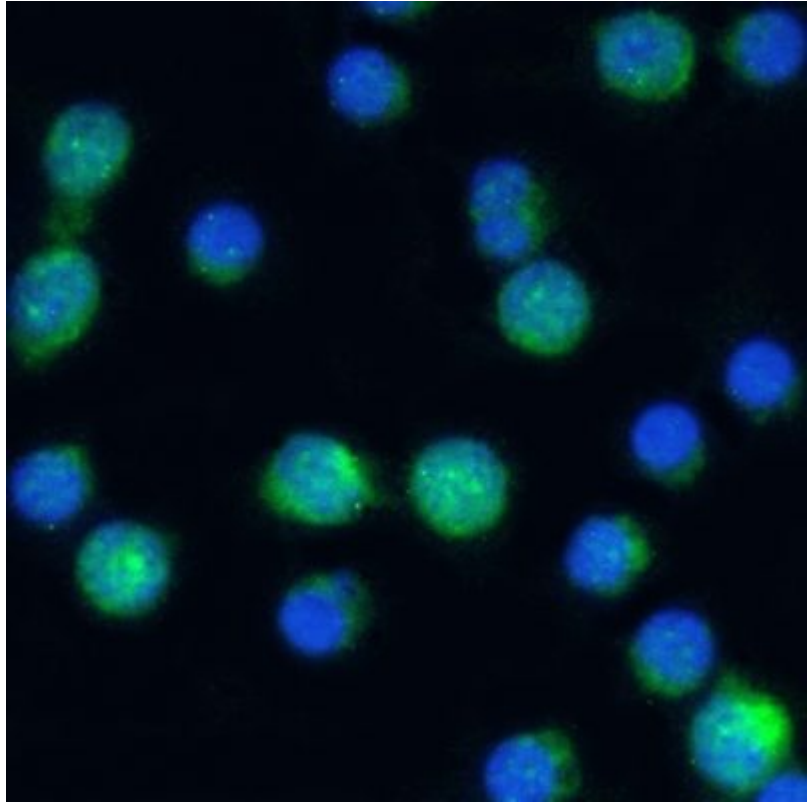
Size: ø 12mm x 0.17mm(#1.5)



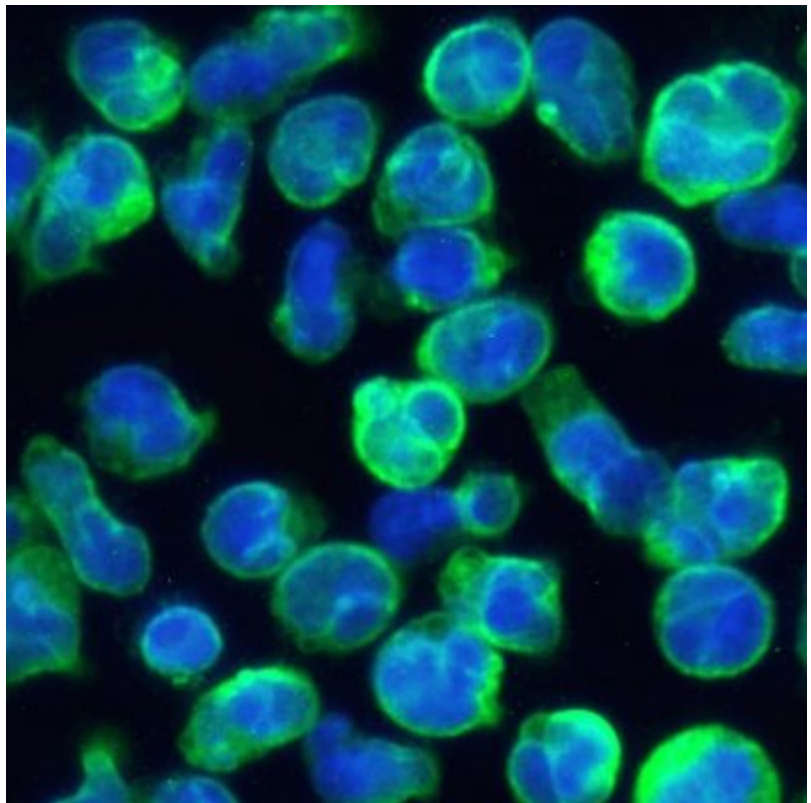
Immunofluorescence analysis of mouse thymocytes immobilized on SHI-FIX™ coverslips



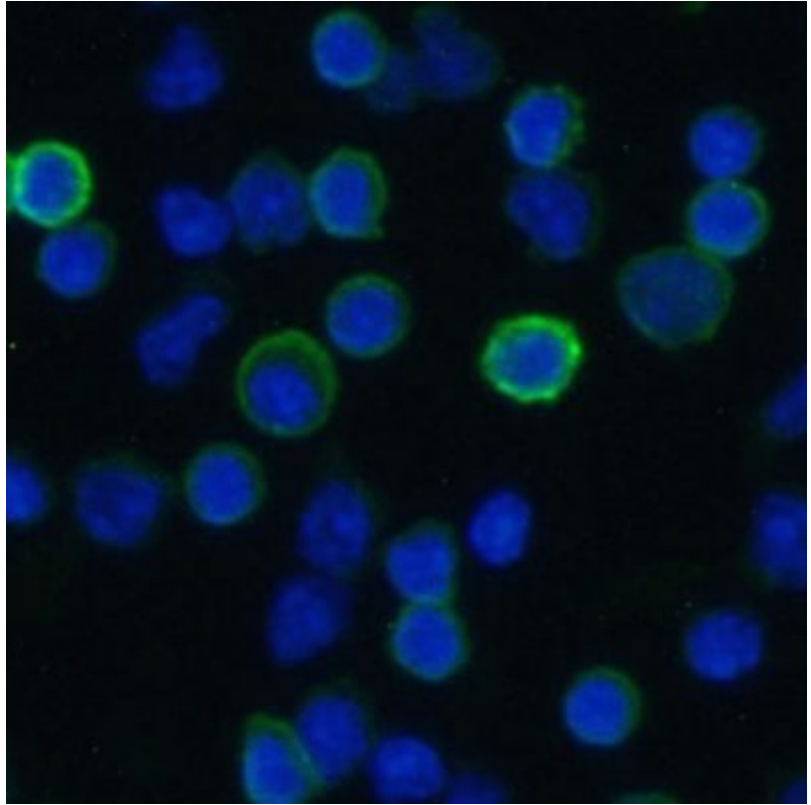
Immunofluorescence analysis of Daudi cells immobilized on SHI-FIX™ coverslips.



Immunofluorescence analysis of human PBMCs immobilized on SHI-FIX™ coverslips. The cells were also stimulated with PMA/ionomycin for 4 hours prior to fixation and permeabilization.



Immunofluorescence analysis of Molt4 cells immobilized on SHI-FIX™ coverslips.



Immunofluorescence analysis of rat splenocytes immobilized on SHI-FIX™ coverslips