

Experts in antigen affinity purified
goat polyclonal antibodies

Experts in antigen affinity purified goat polyclonal antibodies

Since 2000, Everest Biotech has been designing a catalog containing thousands of goat antibodies against a broad range of human, mouse and rat proteins of biomedical interest.

Everest Biotech's commitment to quality and continuous improvement has been recognised with ISO 9001:2015 accreditation. Everest Biotech customers can be assured they will receive high quality products and excellent customer service.

Everest Biotech offers an extensive range of antibodies and peptides, which is continually being updated. They can be categorised according to function and disease as follows:

FUNCTIONAL CLUSTERING:

- Apoptosis and its regulation
- Lipid Transport
- DNA Metabolism and Repair
- GTPase mediated Signal Transduction
- Metal ion binding / Zinc finger
- Transcription and its regulation
- Neuronal development / differentiation
- RNA binding / splicing / processing
- Protein transport / localization & binding
- Ubiquitin cycle / Protein Metabolism
- GTP-binding & GTP activation
- Protein Kinase Activity
- ATPase activity & ATP binding
- Wnt signaling pathway
- Protein Phosphatase Activity
- Transmembrane Proteins & Receptors
- Proteolysis / Protein Metabolism

DISEASE CLUSTERING:

- Allergy
- Autoimmunity
- Cancer
- Cardiovascular
- Syndromes
- Infectious
- Metabolic
- Neuronal

PEPTIDES:

The immunising peptide for all of our antibodies are available for blocking experiments

SECONDARY ANTIBODIES

Rabbit anti-Goat HRP Conjugated

Please visit www.everestbiotech.com for full list of products available in these clusters

Bulk Antibodies

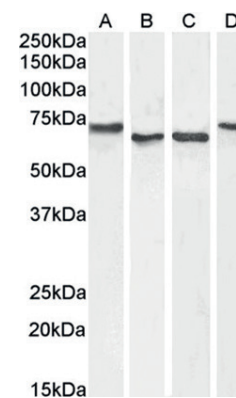
Are you developing an assay and require >1mg of antibody?

Everest Biotech, have stock of over 5000 affinity purified antibodies available in bulk:

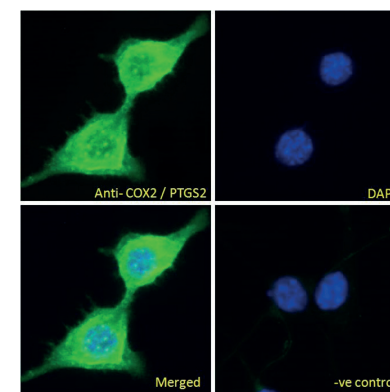
- **HIGHEST PURITY** - Antigen affinity purified as standard.
- **GOAT RAISED ANTIBODIES** - Large batches and lot-lot consistency.
- **DEFINED EPITOPE** - Generated against (and purified using) short peptides, sequence always on the datasheet.
- **TEST SAMPLES AVAILABLE** - From reserved batches.
- **NEXT DAY DELIVERY** - Stocks held in our European and USA Hubs.
- **CHOICE OF FORMATS** - Including BSA free, Azide free and conjugations.
- **COMPETITIVE PRICE PROMISE** - We aim to beat any quote for comparable antibodies.
- **IMMUNIZING PEPTIDES** - Available on request.

Alzheimer's Disease

Alzheimer's is a progressive neurodegenerative disease that affects multiple brain functions. It represents a huge economic burden, with the 2018 World Alzheimer's Report estimating the global societal cost to be in the region of US\$1 trillion. With no currently available cure, research efforts include a strong focus on understanding the role of beta-amyloid in Alzheimer's; approaches to inhibit acetylcholinesterase (ACHE) to compensate for the death of cholinergic neurons; and investigation of the expression and regulation of COX-1 and COX-2 in Alzheimer's pathogenesis.



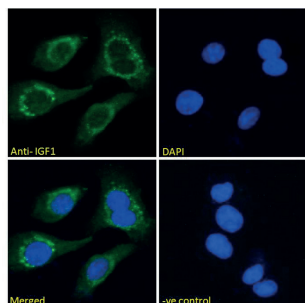
Western blot analysis using goat anti-ACHE antibody (EB06659). HepG2 (A), Daudi (B), HeLa (C), Jurkat (D). Detected by chemiluminescence. Calculated MW of 67.8Da according to NP_000656.1.



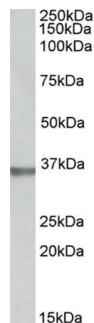
IF analysis using goat anti-COX2 / PTGS2 antibody (EB05286). NIH3T3 incubated with 10 ug/ml EB05286 for 1hr, detected with Alexa Fluor 488 secondary antibody (green). Negative control: unimmunized goat IgG (10 ug/ml), followed by Alexa Fluor 488 secondary antibody. Nuclei stained with DAPI (blue).

Prostate Cancer

Prostate cancer is the most common cancer in men, apart from skin cancer, accounting for approximately 30,000 deaths in the US alone in 2018. If diagnosed early, it can be treated with surgery or radiation therapy, often in combination with hormone therapy, however there is an ongoing drive to improve both diagnosis and treatment of the disease. Researchers studying the onset and progression of prostate cancer investigate bio-markers such as CEP290 (also known as prostate cancer antigen T21), IGF-1, and prostate specific antigen (PSA).



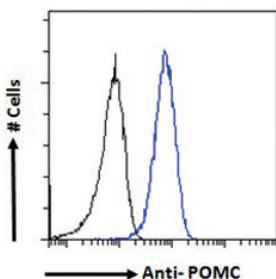
IF analysis using goat anti-IGF1 antibody (EB10358). HEK293 incubated with 10ug/ml EB10358 for 1hr, detected with Alexa Fluor 488 secondary antibody (green). Negative control: unimmunized goat IgG (10ug/ml), followed by Alexa Fluor 488 secondary antibody. Nuclai stained with DAPI (blue).



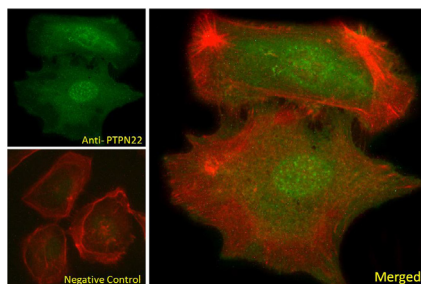
EB09965 (1μg/ml) staining of Human Prostate lysate (35μg protein in RIPA buffer). Detected by chemiluminescence. Calculated MW of 35.8kDa according to NP_036577.1.

Diabetes

Over 20 million people in the US are diagnosed with diabetes each year, with almost four times this number estimated to have pre-diabetes. The prevalence of this chronic condition continues to rise, driven by increasing obesity rates and is placing enormous strain on healthcare providers. Diabetes research is essential to improve health outcomes and deliver substantial economic savings. Key targets studied by diabetes researchers include proopiomelanocortin (POMC), FOXP3, and lymphoid tyrosine phosphatase (LYP).



Flow cytometric analysis using goat anti-proopiomelanocortin /POMC antibody (EB06727). A431 incubated with 10 ug/ml EB06727 for 1hr, detected with Alexa Fluor 488 secondary antibody (blue line). IgG control: unimmunized goat IgG (10ug/ml), followed by Alexa Fluor 488 secondary antibody (black line).



IF analysis using goat anti-LYP /PTPN22 antibody (EB06560). U2OS incubated with 10ug/ml EB06560 for 1hr, detected with Alexa Fluor 488 secondary antibody (green). Negative control: unimmunized goat IgG (10ug/ml), followed by Alexa Fluor 488 secondary antibody. Actin filaments stained with phalloidin (red).