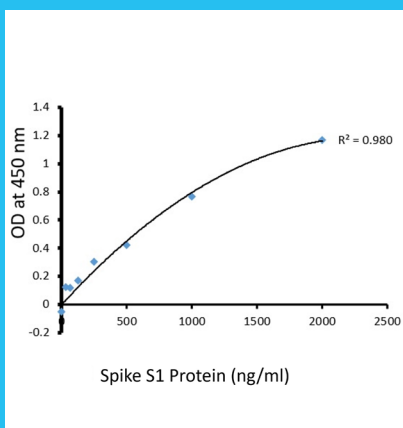


SARS-CoV-2 Matched ELISA Pair Antibodies

Detect COVID-19 with Confidence

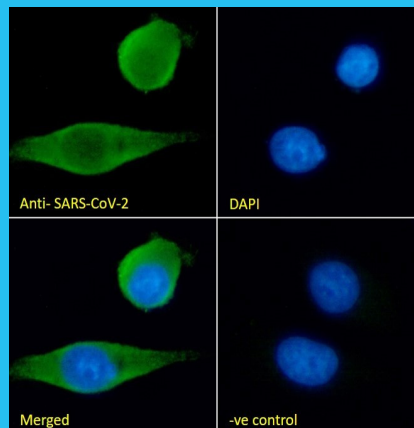
Absolute Biotech is excited to introduce this unique SARS-CoV-2 matched antibody pair generated through a collaborative effort between Everest Biotech and Absolute Antibody. This antibody pair (**EB-PAIR-001-HRP**) enables researchers to generate highly sensitive and specific ELISAs for the detection of SARS-CoV-2. Included in each kit are the Everest Biotech goat anti-SARS-CoV-2 (S1) capture antibody (**EB13088**) and the Absolute Antibody recombinant human IgG1 anti-SARS-CoV (S1) detection antibody (**Ab01680-10.0**) conjugated with horseradish peroxidase (HRP).

Absolute Biotech has united six innovative research reagent and services companies under a single organization, and this new product bundle is the perfect way to show off our combined capabilities by building ELISAs that work better for researchers. The antibody pair allows researchers to benefit from the affordable reliability of goat polyclonal antibodies as their capture antibody and the specificity and clean data of recombinantly engineered antibodies for detection.



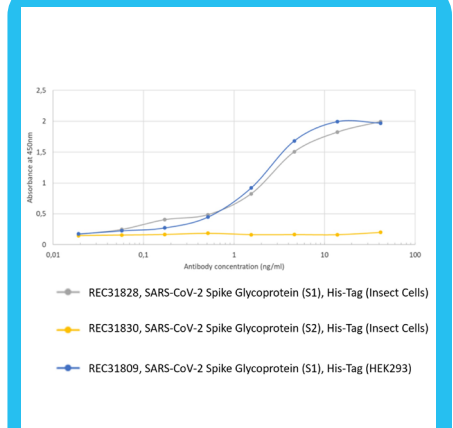
SARS-CoV-2 Match Pair Binding Curve

EB-PAIR-001-HRP. This figure demonstrates the binding curve of both antibodies in the presence of increasing antigen concentrations.



Goat Anti-SARS-CoV-2 S Protein Antibody

EB13088. This figure demonstrates IF analysis of HEK293 cells transfected with SARS-CoV-2 spike protein expressing plasmid.



Anti-COVID-19 & SARS-CoV S Glycoprotein Antibody

Ab01680-10.0. This figure demonstrates the antibody's binding curve to SARS-CoV-2 spike glycoprotein domains S1 and S2 of various origins.

To purchase this product, please visit www.EverestBiotech.com