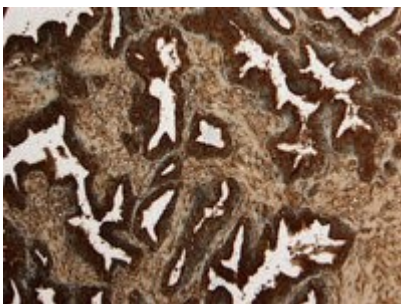


Prostate Cancer

Since 2000, Everest Biotech has been designing a catalogue containing thousands of goat antibodies against a broad range of human, mouse and rat proteins of biomedical interest.

Prostate cancer is the second most common cancer in men, with skin cancer being the first. If diagnosed early, it can be treated with surgery or radiation therapy, often alongside hormone therapy. Immunohistochemistry (IHC) is used for the diagnosis of prostate carcinoma from prostate biopsy. For this process several IHC prostate cancer biomarkers are used, including Prostate Specific Antigen (PSA), Alpha-methylacyl-CoA racemase (AMACR) and ERG.

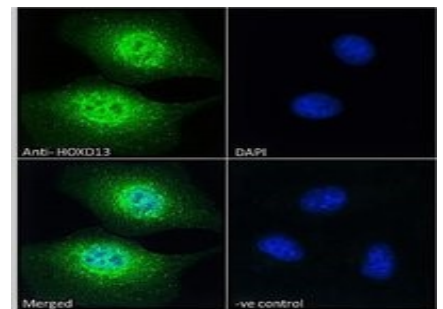
Please view our Prostate Cancer products below:



EB07673 (8µg/ml) staining of paraffin embedded Human Prostate. Heat induced antigen retrieval with citrate



EB07673 Negative Control showing staining of paraffin embedded Human



EB09833 Immunofluorescence analysis of paraformaldehyde fixed HEK293 cells, permeabilized with 0.15% Triton.

Antibodies for Prostate Cancer

| Everest code | Principal name | Applications Tested | Species reactivity | Size available |
|--------------|---|------------------------------|----------------------------------|----------------|
| EB12539 | Goat Anti-AMACR (aa312-326) Antibody | Pep-ELISA, WB, IHC | Human | 100µg/200µl |
| EB12538 | Goat Anti-AMACR Antibody | Pep-ELISA, WB | Human | 100µg/200µl |
| EB06441 | Goat Anti-Androgen Receptor Antibody | Pep-ELISA, WB, IHC, IF, CHIP | Human, Mouse, Rat, Dog, Pig, Cow | 100µg/200µl |
| EB06412 | Goat Anti-BIM Antibody | Pep-ELISA, WB | Human | 100µg/200µl |
| EB09122 | Goat Anti-CEP290 Antibody | Pep-ELISA, IHC, ICC | Human | 100µg/200µl |
| EB08384 | Goat Anti-CEP290 / NPHP6 Antibody | Pep-ELISA, IHC, IF | Human | 100µg/200µl |
| EB07194 | Goat Anti-CYP3A4 Antibody | Pep-ELISA, IHC, FC | Human | 100µg/200µl |
| EB07081 | Goat Anti-ERG Antibody | Pep-ELISA, WB, FC, IF | Human | 100µg/200µl |
| EB11909 | Goat Anti-HOXD13 Antibody | Pep-ELISA, WB | Human, Mouse, Rat, Pig, Cow | 100µg/200µl |
| EB09833 | Goat Anti-HOXD13 Antibody | Pep-ELISA, IHC, IF | Human, Mouse, Rat, Cow | 100µg/200µl |
| EB09834 | Goat Anti-HOXD13 Antibody | Pep-ELISA, WB | Human, Mouse, Rat, Cow, Pig | 100µg/200µl |
| EB10358 | Goat Anti-IGF1 Antibody | Pep-ELISA, WB, IHC, IF, FC | Human, Mouse, Rat, Dog, Cow, Pig | 100µg/200µl |
| EB10959 | Goat Anti-JAG1 Antibody | Pep-ELISA, IF, IHC | Human, Mouse, Rat, Dog, Pig, Cow | 100µg/200µl |
| EB07673 | Goat Anti-KLK2 Antibody | Pep-ELISA, WB, IHC | Human | 100µg/200µl |
| EB07183 | Goat Anti-Oxytocin Receptor Antibody | Pep-ELISA, FC, IHC | Human | 100µg/200µl |
| EB06236 | Goat Anti-PAPIN / PDZK3 Antibody | Pep-ELISA, IF, IHC | Human | 100µg/200µl |
| EB09719 | Goat Anti-PCDH11Y / PCDH11X Antibody | Pep-ELISA, IHC | Human | 100µg/200µl |
| EB06893 | Goat Anti-PSA (isoform 1) / KLK3 Antibody | Pep-ELISA, WB, IHC | Human | 100µg/200µl |
| EB11284 | Goat Anti-SPON2 (301-315) Antibody | Pep-ELISA, WB, IHC | Human, Mouse, Rat, Dog | 100µg/200µl |
| EB09965 | Goat Anti-Spondin 2 / Mindin Antibody | Pep-ELISA, WB | Human, Mouse, Rat, Cow | 100µg/200µl |
| EB12354 | Goat Anti-syndecan 1 / CD138 Antibody | Pep-ELISA | Human | 100µg/200µl |
| EB10332 | Goat Anti-Syt7 Antibody | Pep-ELISA | Human, Mouse, Rat, Dog, Cow | 100µg/200µl |
| EB09795 | Goat Anti-TGFBI Antibody | Pep-ELISA, WB, IHC, IF | Human, Mouse, Rat, Dog | 100µg/200µl |
| EB08380 | Goat Anti-TUSC3 / N33 Antibody | Pep-ELISA, WB, IHC | Human, Mouse, Rat, Cow | 100µg/200µl |