

# CUSTOM WESTERN BLOT SERVICES

*"By far the most commonly used application for research antibodies is western blot...."*

Christi Bird, The Scientist, May 1, 2012, <http://tinyurl.com/ogfnfrw>



**Custom Western blot services for all QC departments, especially for those with limited access to human/rodent tissue lysates.**

For the past decade Everest Biotech has been obtaining reproducible Western blot results for our catalogue items. We would like to extend this service to our clients; Perhaps you have antibodies without proper WB assessments? We can achieve this for you, reducing the need for endless experiments. Our experienced QC team can do this quickly and efficiently - delivering the high quality you know and expect from EB products.

We make sure the blots look clean and that at least two different lysates from the same tissue type give reproducible results. The pictures are delivered with captions including primary dilution, detection method and blot conditions (similar to the captions of our own data).

## Human tissues and cell lines

**Do your antibodies need validation in human tissues?**

**No problem. We have human tissues of all major organs.**

CNS antibodies can be assessed by us in different brain regions. We have lysates of many different regions, and we will be able to expand on that. Our current range is: amygdala, cerebral cortex, cerebellum, frontal cortex, hippocampus, olfactory bulb, substantia nigra, subventricular zone, temporal cortex.

We also have cell lines, and cancer tissues. We will be able to expand according to demand. Our current range is: HEK293, NIH3T3 (mouse), A431, A549, CACO2, Daudi, HeLa, HepG2, Jurkat, K562, Kelly, MCF7, MDCK, Molt4, NSO (mouse), MRC5/PD19, U937, MDA-MB-231, U-2 OS, U251-MG.

Our current cancer tissues are glioblastoma, breast, colorectal, gall bladder, gastrointestinal, pancreas, spinal cord, urethra.

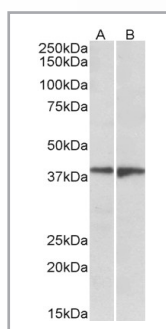
## Knock-down experiments

When the antibodies are fit for QC on adherent human cell lines, we can also outsource for siRNA-mediated knock-down experiments. Data will come with RT-PCR expression data before and after knock-down from at least two different constructs.

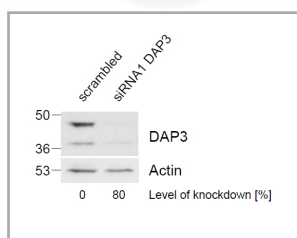
## Rodent tissues

**Do your antibodies need validation in rodent tissues?**

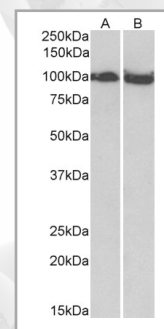
**No problem. All tissue types for mouse and rat are available.**



*EB09535 (1µg/ml) staining of Human Frontal Cortex (A) and Amygdala (B) lysates (35µg protein in RIPA buffer). Primary incubation was 1 hour. Detected by chemiluminescence.*



*EB05427 (1µg/ml) staining of HeLa lysate (control in left lane and after si-RNA-mediated DAP3 knock-down expression in right lane) (35µg protein in RIPA buffer). Level of knock-down relative to Actin expression level was determined by RT-PCR. Primary incubation was 1 hour. Detected by chemiluminescence.*



*EB12170 (0.03µg/ml) staining of Mouse (A) and Rat (B) Skeletal Muscle lysate (35µg protein in RIPA buffer). Primary incubation was 1 hour. Detected by chemiluminescence.*

Contact [support@everestbiotech.com](mailto:support@everestbiotech.com) for further information. We take sets of monoclonal and polyclonal antibodies of between 10 and 50 at one time. For a set of ten, we charge \$100 per antibody. This low price service is restricted to the molecular weight range from 10kDa to 250kDa. Discounts will apply proportionately to the size of assignments. Knock-down experiments are excluded from this pricing structure. A special quotation will be issued.

**[www.everestbiotech.com](http://www.everestbiotech.com)**

Everest Biotech • Cherwell Innovation Centre • 77 Heyford Park • Upper Heyford • Oxfordshire • OX25 5HD • UK  
E-mails: • [info@everestbiotech.com](mailto:info@everestbiotech.com) • [sales@everestbiotech.com](mailto:sales@everestbiotech.com) • [support@everestbiotech.com](mailto:support@everestbiotech.com)