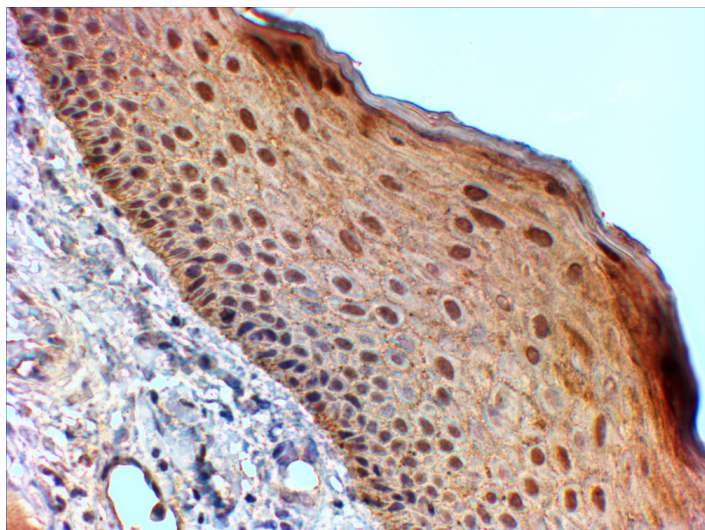


GOAT ANTI-14-3-3 SIGMA / STRATIFIN ANTIBODY

SKU: EB07061



SPECIFICATIONS

Formulation Supplied at 0.5 mg/ml in Tris saline, 0.02% sodium azide, pH7.3 with 0.5% bovine serum albumin.

Unit Size 100 µg

Storage Instructions Aliquot and store at -20°C. Minimize freezing and thawing.

Synonym /

Alias YWHAS|SFN|HGNC:10773|stratifin|14-3-3sigma

Names

Accession ID NP_006133.1

Blocking Peptide EBP07061

Immunogen Peptide with sequence C-DLHTLSEDSYKDST, from the internal region of the protein sequence according to NP_006133.1.

Peptide Sequence C-DLHTLSEDSYKDST

Purification Method Purified from goat serum by ammonium sulphate precipitation followed by antigen affinity chromatography using the immunizing peptide.

Shipping Instructions Refrigerated

Predicted Species	Human, Mouse, Rat, Dog, Pig
Reactive Species	Human, Mouse, Rat
Human Gene ID	2810
Mouse Gene ID	55948
Rat Gene ID	313017
Product Grade	https://prod-vector-labs-pimcore-assets.s3.us-east-1.amazonaws.com/assets/products/image/elite_medium.png
IHC Results	In paraffin embedded Human Skin shows strong nuclear staining in selected cells of the basal layer. Recommended concentration, 2-4µg/ml.
ELISA Detection Limit	Antibody detection limit dilution 1:16000.
Western Blot	Approx 26-28kDa band observed in Human, Mouse and Rat Skin lysates and in lysates of cell lines A431 and U2OS (calculated MW of 27.8kDa according to Human NP_006133.1, Mouse NP_061224.2 and Rat XP_003750096.1). Recommended concentration: 0.03-0.1µg/ml. Primary incubation 1 hour at room temperature.
Application Type	Pep-ELISA, WB, IHC

DOCUMENTS

- [Data Sheet](#)

GALLERY IMAGES

