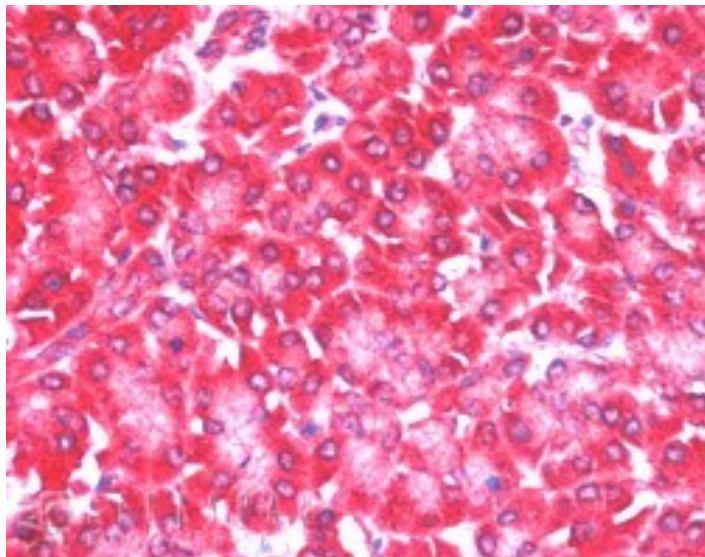


GOAT ANTI-4E-T / EIF4ENIF1 ANTIBODY

SKU: EB06230



SPECIFICATIONS

Formulation	Supplied at 0.5 mg/ml in Tris saline, 0.02% sodium azide, pH7.3 with 0.5% bovine serum albumin.
Unit Size	100 µg
Storage Instructions	Aliquot and store at -20°C. Minimize freezing and thawing.
Synonym / Alias Names	OTTHUMP0000063276 FLJ26551 eIF4E-transporter eukaryotic translation initiation factor 4E nuclear import factor 1 2610509L04Rik FLJ21601 Clast4 4E-T EIF4ENIF1
Accession ID	NP_062817.2; NP_001157974.1
Blocking Peptide	EBP06230
Immunogen	Peptide with sequence C-AKVISVDELEYRQ, from the C Terminus of the protein sequence according to NP_062817.2; NP_001157974.1.
Product Comments	This antibody is expected to recognise isoform 1 (NP_062817.2) and isoform b (NP_001157974.1). Reported variants represent identical protein (NP_062817.2; NP_001157973.1).
Peptide Sequence	C-AKVISVDELEYRQ
Purification Method	Purified from goat serum by ammonium sulphate precipitation followed by antigen affinity chromatography using the immunizing peptide.

Shipping Instructions	Refrigerated
Predicted Species	Human, Mouse, Rat, Dog, Pig, Cow
Reactive Species	Human
Human Gene ID	56478
Mouse Gene ID	74203
Product Grade	https://prod-vector-labs-pimcore-assets.s3.us-east-1.amazonaws.com/assets/products/image/elite_medium.png
IHC Results	In paraffin embedded Human Pancreas shows strong staining of cytoplasm in acinar cells-. Recommended concentration, 5-10µg/ml.
ELISA Detection Limit	Antibody detection limit dilution 1:32000.
Western Blot	Approx 140-150kDa band observed in 293 lysates (predicted size of approx. 108kDa according to NP_062817.1, however our observation agrees with that of Dostie et al (see below)). Recommended for use at 0.25-0.5µg/ml
Application Type	Pep-ELISA, WB, IHC

DOCUMENTS

- [Data Sheet](#)

GALLERY IMAGES

