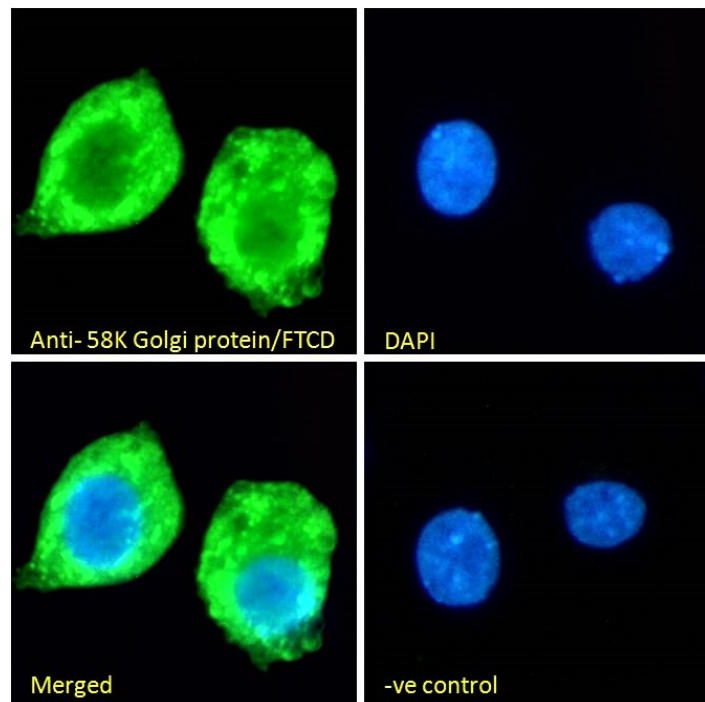


GOAT ANTI-58K GOLGI PROTEIN(N-TERM)/FTCD ANTIBODY

SKU: EB06442



SPECIFICATIONS

Formulation Supplied at 0.5 mg/ml in Tris saline, 0.02% sodium azide, pH7.3 with 0.5% bovine serum albumin.

Unit Size 100 µg

Storage Instructions Aliquot and store at -20°C. Minimize freezing and thawing.

Synonym / Alias Names formiminotransferase-cyclodeaminase|formimidoyltransferase cyclodeaminase|formiminotransferase cyclodeaminase|LCHC1|FTCD

Usage Summary **Immunofluorescence:** Strong expression of the protein seen in HeLa and HepG2 cells. Recommended concentration: 10µg/ml. **Flow Cytometry:** Flow cytometric analysis of HepG2 cells. Recommended concentration: 10ug/ml.

Accession ID NP_006648.1; NP_001307341.1

Blocking Peptide EBP06442

Immunogen	Peptide with sequence SQLVECVPNFSEGKNQ, from the N Terminus of the protein sequence according to NP_006648.1; NP_001307341.1.
Product Comments	Reported variants represent identical protein: NP_996848.1, NP_006648.1
Peptide Sequence	SQLVECVPNFSEGKNQ
Purification Method	Purified from goat serum by ammonium sulphate precipitation followed by antigen affinity chromatography using the immunizing peptide.
Shipping Instructions	Refrigerated
Predicted Species	Human, Mouse, Pig
Reactive Species	Human
Human Gene ID	10841
Mouse Gene ID	14317
Product Grade	https://prod-vector-labs-pimcore-assets.s3.us-east-1.amazonaws.com/assets/products/image/elite_plus_medium.png
ELISA Detection Limit	Antibody detection limit dilution 1:64000.
Western Blot	Approx 58-60kDa band observed in Human Liver lysates and in lysates of cell line HepG2 (calculated MW of 58.9kDa according to NP_006648.1). Recommended concentration: 0.05-0.1µg/ml. Primary incubation 1 hour at room temperature.
Application Type	Pep-ELISA, WB, IF, FC

DOCUMENTS

- [Data Sheet](#)

GALLERY IMAGES

