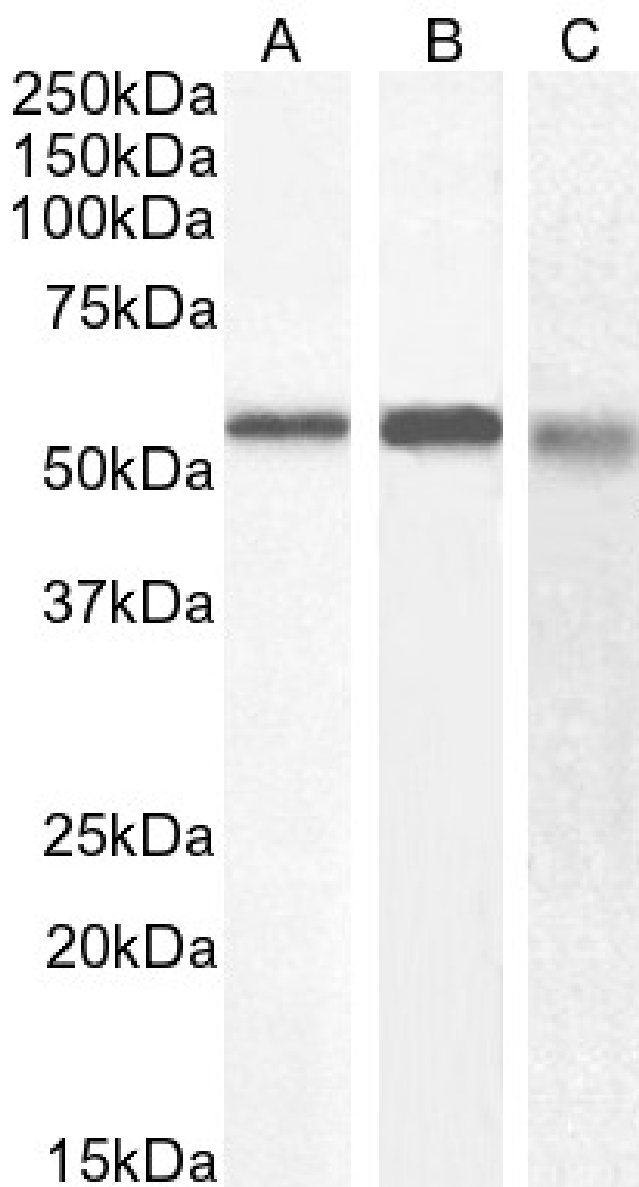


## GOAT ANTI-58KGOLGI PROTEIN(INTERNAL)/FTCD ANTIBODY

SKU: EB06443



## SPECIFICATIONS

|                     |   |
|---------------------|---|
| <b>Formulation</b>  | Supplied at 0.5 mg/ml in Tris saline, 0.02% sodium azide, pH7.3 with 0.5% bovine serum albumin.   |
| <b>Unit Size</b>    | 100 µg  |
| <b>Storage</b>      |   |
| <b>Instructions</b> | Aliquot and store at -20°C. Minimize freezing and thawing.  |
| <b>Synonym /</b>    |   |
| <b>Alias</b>        | LC1 autoantigen formimidoyltransferase cyclodeaminase formiminotransferase cyclodeaminase LCHC1 FTCD  |
| <b>Names</b>        |   |
| <b>Usage</b>        | <strong>Immunofluorescence:</strong> Expression of the protein seen in the membranes and cytoplasm of   |
| <b>Summary</b>      | Caco-2 cells. Recommended concentration: 10µg/ml. <strong>Flow Cytometry:</strong> A customer reported  |
|                     | weak staining on Caco-2 cells at a concentration of 10ug/ml.  |
| <b>Accession</b>    |   |
| <b>ID</b>           | NP_006648.1; NP_996848.1; NP_001307341.1  |
| <b>Blocking</b>     |   |
| <b>Peptide</b>      | EBP06443  |
| <b>Immunogen</b>    | Peptide with sequence CLREQGRGKDQPGRL, from the internal region of the protein sequence according to  |
|                     | NP_006648.1; NP_996848.1; NP_001307341.1.   |
| <b>Product</b>      |   |
| <b>Comments</b>     | Variants (NP_006648.1; NP_996848.1) encode the same protein.  |
| <b>Peptide</b>      |   |
| <b>Sequence</b>     | CLREQGRGKDQPGRL   |
| <b>Purification</b> | Purified from goat serum by ammonium sulphate precipitation followed by antigen affinity chromatography using   |
| <b>Method</b>       | the immunizing peptide.   |
| <b>Shipping</b>     |   |
| <b>Instructions</b> | Refrigerated  |
| <b>Predicted</b>    |   |
| <b>Species</b>      | Human, Mouse, Rat, Pig, Cow   |
| <b>Reactive</b>     |   |
| <b>Species</b>      | Human, Mouse, Rat   |
| <b>Human</b>        |   |
| <b>Gene ID</b>      | 10841   |
| <b>Product</b>      |   |
| <b>Grade</b>        | <a href="https://prod-vector-labs-pimcore-assets.s3.us-east-1.amazonaws.com/assets/products/image/elite_plus_medium.png">https://prod-vector-labs-pimcore-assets.s3.us-east-1.amazonaws.com/assets/products/image/elite_plus_medium.png</a> |
| <b>IHC Results</b>  | Paraffin embedded Human Liver. Recommended concentration: 5-6µg/ml.   |
| <b>ELISA</b>        |   |
| <b>Detection</b>    | Antibody detection limit dilution 1:32000.  |
| <b>Limit</b>        |   |
| <b>Western</b>      | Approx 55-58kDa band observed in Human, Mouse and Rat Liver lysates (calculated MW of 58.9kDa according to  |
| <b>Blot</b>         | Human NP_006648.1, Mouse NP_543121.1 and Rat NP_446019.1). Recommended concentration: 0.5-1µg/ml.   |
|                     | Primary incubation 1 hour at room temperature.  |
| <b>Application</b>  |   |
| <b>Type</b>         | Pep-ELISA, WB, IF, IHC  |

## DOCUMENTS

- [Data Sheet](#)

## GALLERY IMAGES

