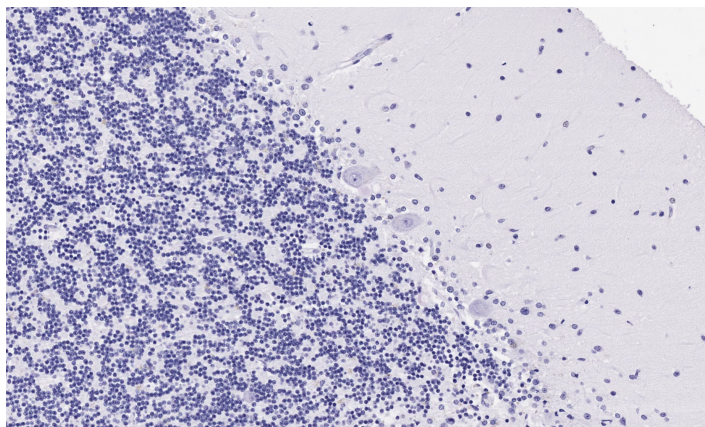


GOAT ANTI-5HT2A RECEPTOR (AA296-309) ANTIBODY

SKU: EB11740



SPECIFICATIONS

Formulation	Supplied at 0.5 mg/ml in Tris saline, 0.02% sodium azide, pH7.3 with 0.5% bovine serum albumin.
Unit Size	100 µg
Storage Instructions	Aliquot and store at -20°C. Minimize freezing and thawing.
Synonym / Alias Names	serotonin receptor 2A serotonin 5-HT-2A receptor OTTHUMP00000018378 HTR2A HTR2 5-hydroxytryptamine receptor 2A 5-hydroxytryptamine (serotonin) receptor 2A 5-HT-2A 5-HT2A 5-HT2 receptor 5-HT-2
Usage Summary	Immunofluorescence: Strong expression of the protein seen in the cytoplasm of A549 cells. Recommended concentration: 10µg/ml. Flow Cytometry: Flow cytometric analysis of A549 cells. Recommended concentration: 10ug/ml.
Accession ID	NP_000612.1; NP_001159419.1
Blocking Peptide	EBP11740
Immunogen	Peptide with sequence C-QRSIHREPGSYTGR, from the internal region of the protein sequence according to NP_000612.1; NP_001159419.1.
Product Comments	This antibody is expected to recognize both reported isoforms (NP_000612.1; NP_001159419.1).
Peptide Sequence	C-QRSIHREPGSYTGR
Purification Method	Purified from goat serum by ammonium sulphate precipitation followed by antigen affinity chromatography using the immunizing peptide.
Shipping Instructions	Refrigerated

Predicted Species	Human
Reactive Species	Human
Human Gene ID	3356
Product Grade	https://prod-vector-labs-pimcore-assets.s3.us-east-1.amazonaws.com/assets/products/image/elite_plus_medium.png
IHC Results	Paraffin embedded Human Brain (Cerebellum). Recommended concentration: 2µg/ml.
ELISA	
Detection Limit	Antibody detection limit dilution 1:128000.
Application Type	Pep-ELISA, IHC, IF, FC

DOCUMENTS

- [Data Sheet](#)

GALLERY IMAGES

