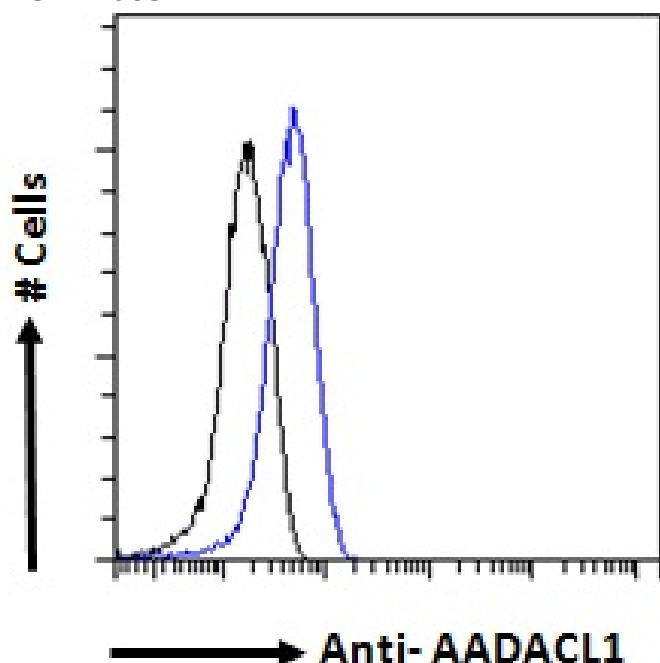


GOAT ANTI-AADACL1 ANTIBODY

SKU: EB08327



SPECIFICATIONS

Formulation Supplied at 0.5 mg/ml in Tris saline, 0.02% sodium azide, pH7.3 with 0.5% bovine serum albumin.

Unit Size 100 µg

Storage Instructions Aliquot and store at -20°C. Minimize freezing and thawing.

Synonym /

Alias Names arylacetamide deacetylase-like 1|AADACL1

Usage Summary **Immunofluorescence:** Strong expression of the protein seen in the Endoplasmic reticulum of A431 and U2OS cells. Recommended concentration: 10µg/ml. **Flow Cytometry:** Flow cytometric analysis of A431 cells. Recommended concentration: 10ug/ml.

Accession ID NP_065843.3; NP_001139748.2; NP_001139749.1

Blocking Peptide EBP08327

Immunogen	Peptide with sequence C-RTRNSYIKWLDQN, from the C Terminus of the protein sequence according to NP_065843.3; NP_001139748.2; NP_001139749.1.
Peptide Sequence	C-RTRNSYIKWLDQN
Purification Method	Purified from goat serum by ammonium sulphate precipitation followed by antigen affinity chromatography using the immunizing peptide.
Shipping Instructions	Refrigerated
Predicted Species	Human, Mouse, Dog, Cow
Reactive Species	Human
Human Gene ID	57552
Mouse Gene ID	320024
Product Grade	https://prod-vector-labs-pimcore-assets.s3.us-east-1.amazonaws.com/assets/products/image/elite_medium.png
ELISA Detection Limit	Antibody detection limit dilution 1:1000.
Western Blot	Preliminary experiments gave an approx 26-28kDa band in A431 cell lysates and in Human Hippocampus lysates after 1µg/ml antibody staining. This band was successfully blocked by incubation with the immunizing peptide. Primary incubation 1 hour at room temperature. Please note that we currently cannot find an explanation in the literature for the band, given the calculated size of 31.2kDa according to NP_001139749.1
Application Type	Pep-ELISA, IF, FC

DOCUMENTS

- [Data Sheet](#)

GALLERY IMAGES

