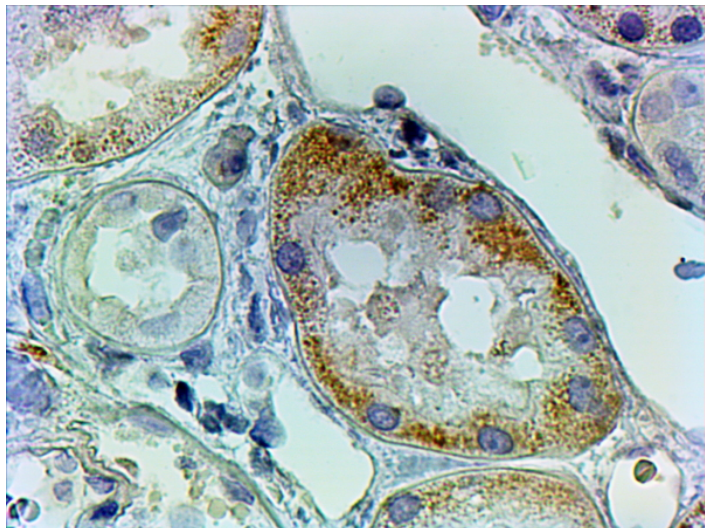


# GOAT ANTI-AADAT (INT.) ANTIBODY

**SKU:** EB08260



## SPECIFICATIONS

**Formulation** Supplied at 0.5 mg/ml in Tris saline, 0.02% sodium azide, pH7.3 with 0.5% bovine serum albumin.

**Unit Size** 100 µg

**Storage Instructions** Aliquot and store at -20°C. Minimize freezing and thawing.

**Synonym / Alias Names** AADAT|aminoadipate aminotransferase|KAT2|KATII|L kynurenine/alpha aminoadipate aminotransferase|L-kynurenine/alpha-aminoadipate aminotransferase|alpha-aminoadipate aminotransferase|kynurenine aminotransferase II

**Accession ID** NP\_057312.1; NP\_872603.1

**Blocking Peptide** EBP08260

**Immunogen** Peptide with sequence C-DRVIDFYSNQKD, from the internal region of the protein sequence according to NP\_057312.1; NP\_872603.1.

**Product Comments** Both reported variants represent identical protein (NP\_057312.1 and NP\_872603.1).

**Peptide Sequence** C-DRVIDFYSNQKD

**Purification Method** Purified from goat serum by ammonium sulphate precipitation followed by antigen affinity chromatography using the immunizing peptide.

<b>Shipping Instructions</b>	Refrigerated
<b>Predicted Species</b>	Human
<b>Reactive Species</b>	Human
<b>Human Gene ID</b>	51166
<b>Product Grade</b>	<a href="https://prod-vector-labs-pimcore-assets.s3.us-east-1.amazonaws.com/assets/products/image/elite_medium.png">https://prod-vector-labs-pimcore-assets.s3.us-east-1.amazonaws.com/assets/products/image/elite_medium.png</a>
<b>IHC Results</b>	In paraffin embedded Human Kidney shows mitochondrial staining in PCT. Recommended concentration, 2-4µg/ml.
<b>ELISA</b>	
<b>Detection Limit</b>	Antibody detection limit dilution 1:32000.
<b>Application Type</b>	Pep-ELISA, IHC

## DOCUMENTS

- [Data Sheet](#)

## GALLERY IMAGES

