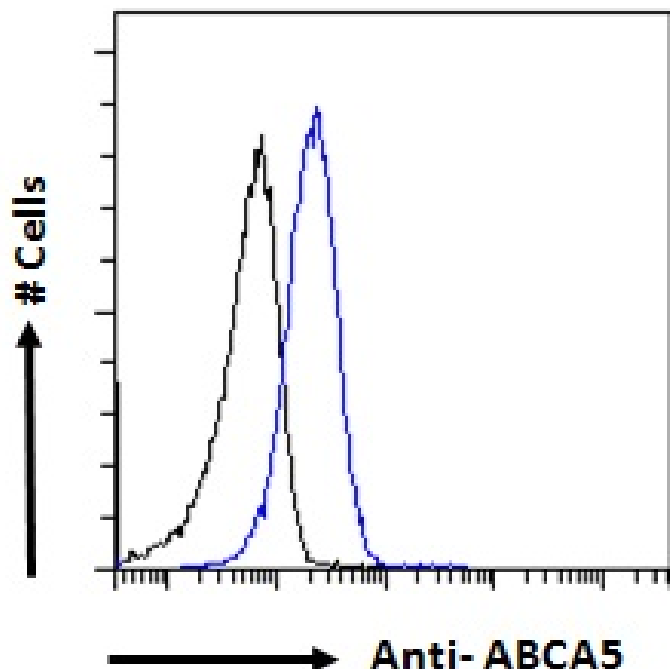


# GOAT ANTI-ABCA5 ANTIBODY

SKU: EB08616



## SPECIFICATIONS

<b>Unit Size</b>	100 µg
<b>Synonym /</b>	ATP-binding cassette, sub-family A , member 5 ATP-binding cassette
<b>Alias</b>	A5 FLJ16381 DKFZp779N2435 DKFZp451F117 ABC13 ATP-binding cassette, sub-family A (ABC1), member
<b>Names</b>	5 ABCA5
<b>Usage</b>	<strong>Flow Cytometry:</strong> Flow cytometric analysis of HepG2 cells. Recommended concentration:
<b>Summary</b>	10ug/ml.
<b>Accession ID</b>	NP_758424.1
<b>Blocking Peptide</b>	EBP08616
<b>Immunogen</b>	Peptide with sequence DYSSETSEDDSLKC, from the internal region of the protein sequence according to NP_758424.1.
<b>Product Comments</b>	Reported variants represent identical protein: NP_061142.2 and NP_758424.1

<b>Peptide Sequence</b>	DYSSETSEDDDSLKC
<b>Shipping Instructions</b>	Refrigerated
<b>Predicted Species</b>	Human
<b>Reactive Species</b>	Human
<b>Human Gene ID</b>	23461
<b>Product Grade</b>	<a href="https://prod-vector-labs-pimcore-assets.s3.us-east-1.amazonaws.com/assets/products/image/elite_medium.png">https://prod-vector-labs-pimcore-assets.s3.us-east-1.amazonaws.com/assets/products/image/elite_medium.png</a>
<b>ELISA Detection Limit</b>	Antibody detection limit dilution 1:1000.
<b>Application Type</b>	Pep-ELISA, FC

## DOCUMENTS

- [Data Sheet](#)

## GALLERY IMAGES

