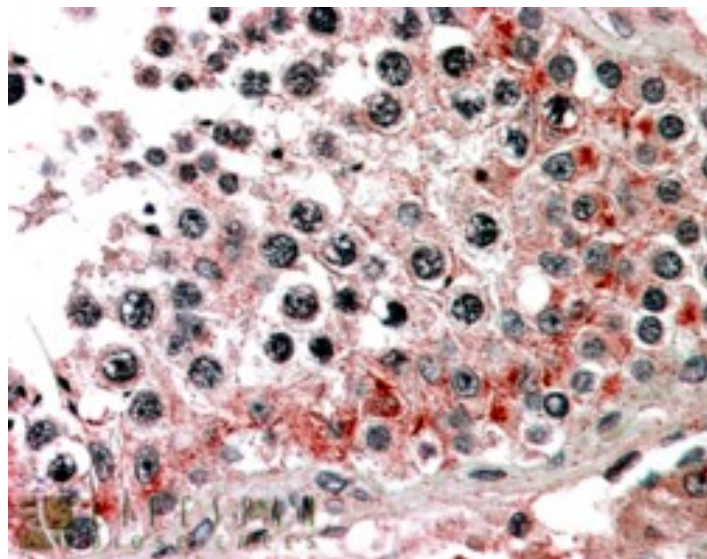


GOAT ANTI-ABCB9 / TAPL ANTIBODY

SKU: EB05736



SPECIFICATIONS

Formulation Supplied at 0.5 mg/ml in Tris saline, 0.02% sodium azide, pH7.3 with 0.5% bovine serum albumin.

Unit Size 100 µg

Storage Instructions Aliquot and store at -20°C. Minimize freezing and thawing.

Synonym /

Alias Names ABCB9|ATP-binding cassette, sub-family B (MDR/TAP), member 9|TAPL|KIAA1520|EST122234

Accession ID NP_062570.1; NP_062571.1; NP_982269.1

Blocking Peptide EBP05736

Immunogen Peptide with sequence C-GHNEPVANGSHKA, from the C Terminus of the protein sequence according to NP_062570.1; NP_062571.1; NP_982269.1.

Product Comments This antibody is expected to recognise both human isoforms of this protein (as represented by NP_062570.1, NP_062571.1 and NP_982269.1). Variants (NP_062571.1; NP_982269.1) encode the same isoform.

Peptide Sequence C-GHNEPVANGSHKA

Purification Method Purified from goat serum by ammonium sulphate precipitation followed by antigen affinity chromatography using the immunizing peptide.

Shipping Instructions	Refrigerated
Predicted Species	Human
Reactive Species	Human
Human Gene ID	23457
Product Grade	https://prod-vector-labs-pimcore-assets.s3.us-east-1.amazonaws.com/assets/products/image/elite_medium.png
IHC Results	In paraffin embedded Human Testis shows vesiculate cytoplasm staining of primary spermatocytes. Recommended concentration, 3-5µg/ml.
ELISA	
Detection Limit	Antibody detection limit dilution 1:64000.
Western Blot	Preliminary experiments gave no signal but low background in human brain and liver lysates at up to 1µg/ml. We would appreciate any feedback from people in the field - have any results been reported with other antibodies/lysates?
Application Type	Pep-ELISA, IHC

DOCUMENTS

- [Data Sheet](#)

GALLERY IMAGES

