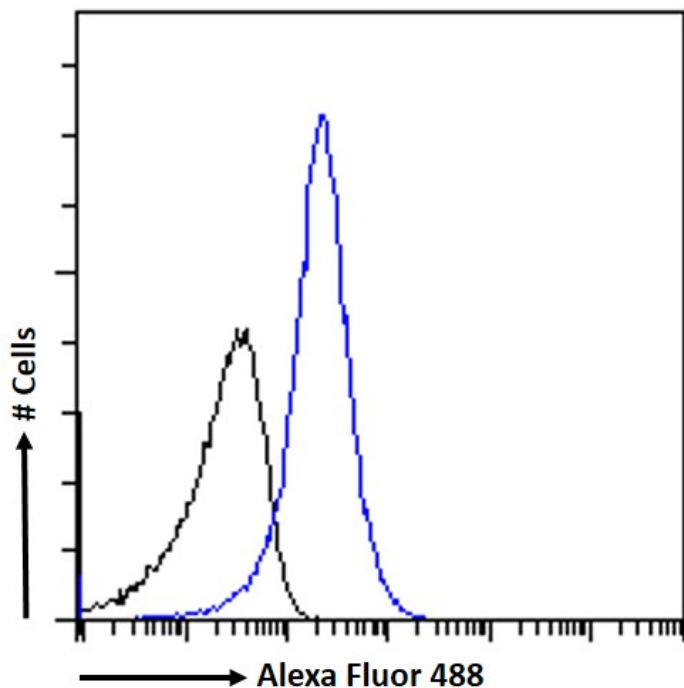


# GOAT ANTI-ABHD6 ANTIBODY

SKU: EB08782



## SPECIFICATIONS

**Formulation** Supplied at 0.5 mg/ml in Tris saline, 0.02% sodium azide, pH7.3 with 0.5% bovine serum albumin.

**Unit Size** 100 µg

**Storage Instructions** Aliquot and store at -20°C. Minimize freezing and thawing.

**Synonym /**

**Alias** lipase protein|abhydrolase domain containing 6|ABHD6

**Names**

**Usage Summary** **Immunofluorescence:** Strong expression of the protein seen in the vesicles of A549 cells. Recommended concentration: 10µg/ml. **Flow Cytometry:** Flow cytometric analysis of A549 cells. Recommended concentration: 10ug/ml.

**Accession ID** NP\_065727.4

**Blocking Peptide** EBP08782

|                              |   |
|------------------------------|---|
| <b>Immunogen</b>             | Peptide with sequence C-SEKSRYSYLHQNMMDK, from the internal region of the protein sequence according to NP_065727.4.  |
| <b>Peptide Sequence</b>      | C-SEKSRYSYLHQNMMDK  |
| <b>Purification Method</b>   | Purified from goat serum by ammonium sulphate precipitation followed by antigen affinity chromatography using the immunizing peptide.   |
| <b>Shipping Instructions</b> | Refrigerated  |
| <b>Predicted Species</b>     | Human, Mouse, Rat, Dog, Cow   |
| <b>Reactive Species</b>      | Human   |
| <b>Human Gene ID</b>         | 57406   |
| <b>Mouse Gene ID</b>         | 66082   |
| <b>Rat Gene ID</b>           | 305795  |
| <b>Product Grade</b>         | <a href="https://prod-vector-labs-pimcore-assets.s3.us-east-1.amazonaws.com/assets/products/image/elite_medium.png">https://prod-vector-labs-pimcore-assets.s3.us-east-1.amazonaws.com/assets/products/image/elite_medium.png</a> |
| <b>ELISA</b>                 |   |
| <b>Detection Limit</b>       | Antibody detection limit dilution 1:32000.  |
| <b>Application Type</b>      | Pep-ELISA, IF, FC   |

## DOCUMENTS

- [Data Sheet](#)

## GALLERY IMAGES

