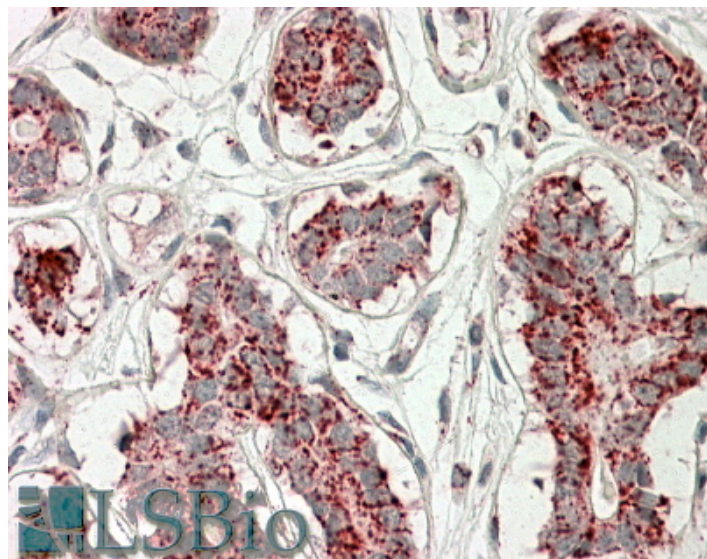


# GOAT ANTI-ACONITASE 2 (AA541-555) ANTIBODY

**SKU:** EB09858



## SPECIFICATIONS

**Formulation** Supplied at 0.5 mg/ml in Tris saline, 0.02% sodium azide, pH7.3 with 0.5% bovine serum albumin.

**Unit Size** 100 µg

**Storage Instructions** Aliquot and store at -20°C. Minimize freezing and thawing.

**Synonym /**

**Alias Names** ACO2|MGC33908|MGC20605|ACONM|aconitase 2, mitochondrial

**Accession ID** NP\_001089.1

**Blocking Peptide** EBP09858

**Immunogen** Peptide with sequence C-QDTYQHPPKDSSGQH, from the internal region of the protein sequence according to NP\_001089.1.

**Peptide Sequence** C-QDTYQHPPKDSSGQH

**Purification Method** Purified from goat serum by ammonium sulphate precipitation followed by antigen affinity chromatography using the immunizing peptide.

**Shipping Instructions** Refrigerated

<b>Predicted Species</b>	Human, Mouse, Rat, Dog, Cow, Pig
<b>Reactive Species</b>	Human, Mouse, Rat, Pig
<b>Human Gene ID</b>	50
<b>Mouse Gene ID</b>	11429
<b>Rat Gene ID</b>	79250
<b>Product Grade</b>	<a href="https://prod-vector-labs-pimcore-assets.s3.us-east-1.amazonaws.com/assets/products/image/elite_medium.png">https://prod-vector-labs-pimcore-assets.s3.us-east-1.amazonaws.com/assets/products/image/elite_medium.png</a>
<b>IHC Results</b>	In paraffin embedded Human Breast shows mitochondrial staining in the epithelial cells of the ducts. Recommended concentration, 3-5µg/ml.
<b>ELISA Detection Limit</b>	Antibody detection limit dilution 1:16000.
<b>Western Blot</b>	Approx 90kDa band observed in Human Heart lysates, in Human, Mouse and Rat Adipose lysates and in Mouse, Rat and Pig Skeletal Muscle lysates (calculated MW of 85.4kDa according to NP_001089.1). Recommended concentration: 0.01-0.03µg/ml.
<b>Application Type</b>	Pep-ELISA, WB, IHC

## DOCUMENTS

- [Data Sheet](#)

## GALLERY IMAGES

