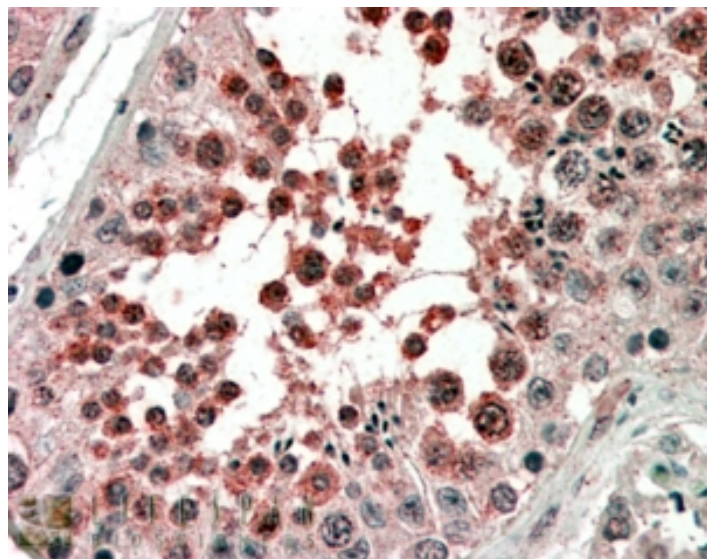


GOAT ANTI-ACVR1 ANTIBODY

SKU: EB08207



SPECIFICATIONS

Formulation Supplied at 0.5 mg/ml in Tris saline, 0.02% sodium azide, pH7.3 with 0.5% bovine serum albumin.

Unit Size 100 µg

Storage Instructions Aliquot and store at -20°C. Minimize freezing and thawing.

Synonym / Alias Names hydroxyalkyl-protein kinase|activin A type I receptor|activin A receptor, type II-like kinase 2|SKR1|FOP|ALK2|ACVRLK2|ACTRI|activin A receptor, type I|ACVR1

Accession ID NP_001096.1

Blocking Peptide EBP08207

Immunogen Peptide with sequence C-RKFKRRNQERLNPRD, from the internal region of the protein sequence according to NP_001096.1.

Product Comments Reported variants represent identical protein: NP_001096.1, NP_001104537.1

Peptide Sequence C-RKFKRRNQERLNPRD

Purification Method Purified from goat serum by ammonium sulphate precipitation followed by antigen affinity chromatography using the immunizing peptide.

Shipping Instructions	Refrigerated
Predicted Species	Human, Mouse, Rat, Dog
Reactive Species	Human
Human Gene ID	90
Mouse Gene ID	11477
Rat Gene ID	79558
Product Grade	https://prod-vector-labs-pimcore-assets.s3.us-east-1.amazonaws.com/assets/products/image/elite_medium.png
IHC Results	In paraffin embedded Human Testis shows preferential staining of cytoplasm in primary spermatocytes.. Recommended concentration, 4-6µg/ml.
ELISA	
Detection Limit	Antibody detection limit dilution 1:128000.
Western Blot	Approx 60kDa band observed in Human Umbilical Cord lysates (calculated MW of 57.2kDa according to NP_001096.1). Recommended concentration: 0.3-1µg/ml.
Application Type	Pep-ELISA, WB, IHC

DOCUMENTS

- [Data Sheet](#)

GALLERY IMAGES

