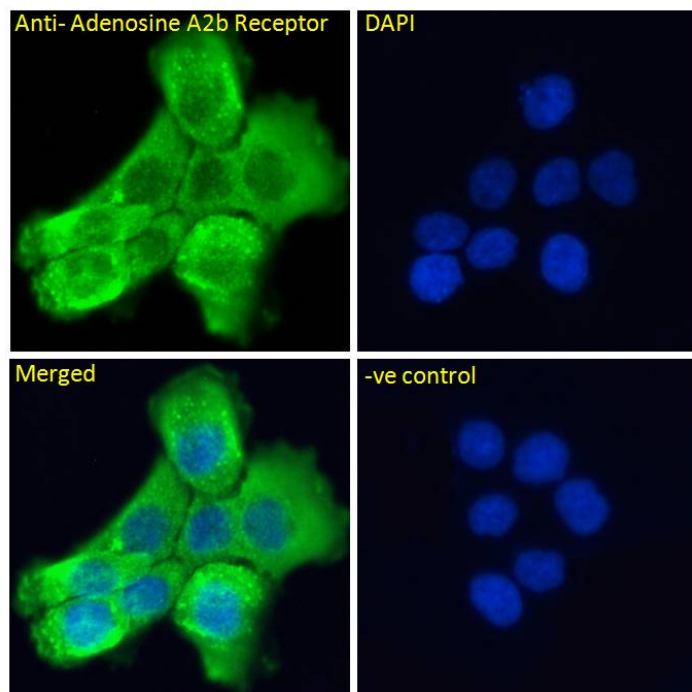


GOAT ANTI-ADENOSINE A2B RECEPTOR ANTIBODY

SKU: EB06936



SPECIFICATIONS

Formulation Supplied at 0.5 mg/ml in Tris saline, 0.02% sodium azide, pH7.3 with 0.5% bovine serum albumin.

Unit Size 100 µg

Storage Instructions Aliquot and store at -20°C. Minimize freezing and thawing.

Synonym /

Alias Names netrin-1 receptor|ADORA2|HGNC:264|ADORA2B|adenosine A2b receptor

Usage Summary **Immunofluorescence:** Strong expression of the protein seen in the cytoplasm of A431 and U2OS cells. Recommended concentration: 10µg/ml. **Flow Cytometry:** Flow cytometric analysis of Kelly cells. Recommended concentration: 10ug/ml.

Accession ID NP_000667.1

Blocking Peptide EBP06936

Immunogen Peptide with sequence CQADVKSNGNQ, from the C Terminus of the protein sequence according to NP_000667.1.

Peptide Sequence	CQADVKSGNGQ
Purification Method	Purified from goat serum by ammonium sulphate precipitation followed by antigen affinity chromatography using the immunizing peptide.
Shipping Instructions	Refrigerated
Predicted Species	Human
Reactive Species	Human
Human Gene ID	136
Product Grade	https://prod-vector-labs-pimcore-assets.s3.us-east-1.amazonaws.com/assets/products/image/elite_plus_medium.png
IHC Results	In paraffin embedded Human Kidney shows cytoplasm staining in cells of renal tubules. Recommended concentration: 2-4µg/ml.
ELISA	
Detection Limit	Antibody detection limit dilution 1:64000.
Application Type	Pep-ELISA, IF, FC, IHC

DOCUMENTS

- [Data Sheet](#)

GALLERY IMAGES

