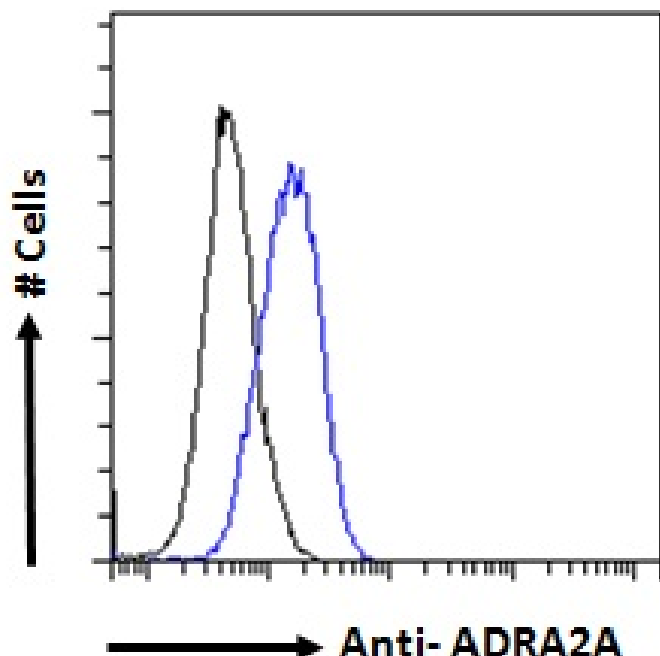


GOAT ANTI-ADRA2A ANTIBODY

SKU: EB07121



SPECIFICATIONS

Formulation Supplied at 0.5 mg/ml in Tris saline, 0.02% sodium azide, pH7.3 with 0.5% bovine serum albumin.

Unit Size 100 µg

Storage Instructions Aliquot and store at -20°C. Minimize freezing and thawing.

Synonym / Alias Names alpha-2AAR subtype C10|alpha-2A-adrenergic receptor|OTTHUMP00000058849|ZNF32|ALPHA2AAR|ADRAR|ADRA2R|ADRA2|adrenergic, alpha-2A-, receptor|ADRA2A

Usage Summary **Immunofluorescence:** Strong expression of the protein seen in the membranes of MCF7 cells. Recommended concentration: 10µg/ml. **Flow Cytometry:** Flow cytometric analysis of MCF7 cells. Recommended concentration: 10ug/ml.

Accession ID NP_000672.3

Blocking Peptide EBP07121

Immunogen	Peptide with sequence C-TERRPNGLGPERs, from the internal region of the protein sequence according to NP_000672.3.
Peptide Sequence	C-TERRPNGLGPERs
Purification Method	Purified from goat serum by ammonium sulphate precipitation followed by antigen affinity chromatography using the immunizing peptide.
Shipping Instructions	Refrigerated
Predicted Species	Human, Mouse, Rat, Dog
Reactive Species	Human
Human Gene ID	150
Product Grade	https://prod-vector-labs-pimcore-assets.s3.us-east-1.amazonaws.com/assets/products/image/elite_medium.png
ELISA	
Detection Limit	Antibody detection limit dilution 1:32000.
Application Type	Pep-ELISA, IF, FC

DOCUMENTS

- [Data Sheet](#)

GALLERY IMAGES

