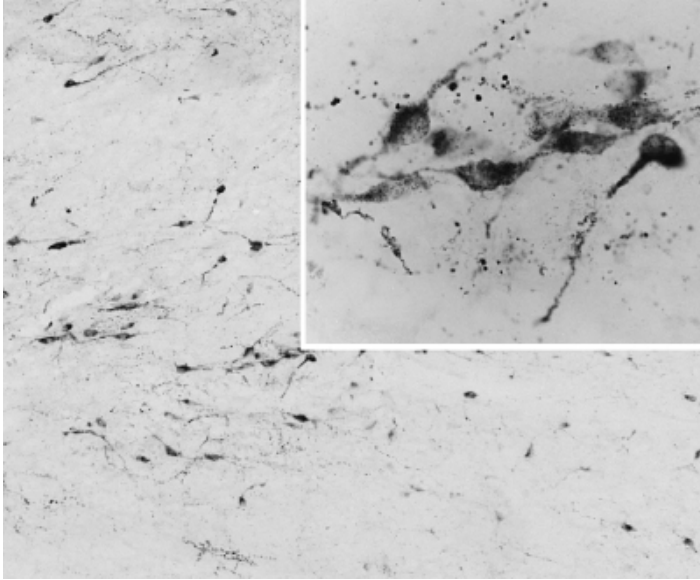


# GOAT ANTI-AGRP / AGOUTI-RELATED PROTEIN ANTIBODY

SKU: EB06725



## SPECIFICATIONS

**Formulation** Supplied at 0.5 mg/ml in Tris saline, 0.02% sodium azide, pH7.3 with 0.5% bovine serum albumin.

**Unit Size** 100 µg

**Storage Instructions** Aliquot and store at -20°C. Minimize freezing and thawing.

**Synonym / Alias Names** agouti related protein homolog|MGC118963|Agouti-related transcript, mouse, homolog of|agouti (mouse) related protein|agouti related protein homolog (mouse)|ASIP2|AGRT|ART|AGRP

**Accession ID** NP\_001129.1; NP\_015531.1

**Blocking Peptide** EBP06725

**Immunogen** Peptide with sequence CRKLG TAMNPCSRT, from the C Terminus of the protein sequence according to NP\_001129.1; NP\_015531.1.

**Product Comments** This antibody is expected to recognise both reported isoforms (as represented by NP\_001129; NP\_015531)

**Peptide Sequence** CRKLG TAMNPCSRT

<b>Purification Method</b>	Purified from goat serum by ammonium sulphate precipitation followed by antigen affinity chromatography using the immunizing peptide.
<b>Shipping Instructions</b>	Refrigerated
<b>Predicted Species</b>	Human, Dog, Pig
<b>Reactive Species</b>	Human
<b>Human Gene ID</b>	181
<b>Product Grade</b>	<a href="https://prod-vector-labs-pimcore-assets.s3.us-east-1.amazonaws.com/assets/products/image/elite_medium.png">https://prod-vector-labs-pimcore-assets.s3.us-east-1.amazonaws.com/assets/products/image/elite_medium.png</a>
<b>IHC Results</b>	Frozen section of Human Hypothalamus shows staining of a group of neuronal cell bodies in the human infundibular (arcuate) nucleus and their varicose axons. Recommended concentration: 0.05-0.1µg/ml.
<b>ELISA Detection Limit</b>	Antibody detection limit dilution 1:32000.
<b>Western Blot</b>	Preliminary experiments gave bands at approx 45kDa and 24kDa in Human Brain lysates after 0.1µg/ml antibody staining. These bands were successfully blocked by incubation with the immunizing peptide. Primary incubation 1 hour at room temperature. Please note that we cannot currently find an explanation in the literature given the calculated size of 14.4kDa according to NP_001129.1 and NP_015531.1.
<b>Application Type</b>	Pep-ELISA, IHC

## SELECTED REFERENCES

[{"pmid": 25084101, "intro": "**This antibody has been successfully used as a specificity control in the following paper:**", "title": "Colocalization of Cocaine- and Amphetamine-Regulated Transcript with Kisspeptin and Neurokinin B in the Human Infundibular Region", "author": "Katalin Skrapits, Beáta Á Borsay, László Herczeg, Philippe Ciofi, Stephen R Bloom, Mohammad A Ghatei, Waljit S Dhillon, Zsolt Liposits, Erik Hrabovszky", "journal": "PLoS One. 2014 Aug 1;9(8):e103977."}]

## DOCUMENTS

- [Data Sheet](#)

## GALLERY IMAGES

