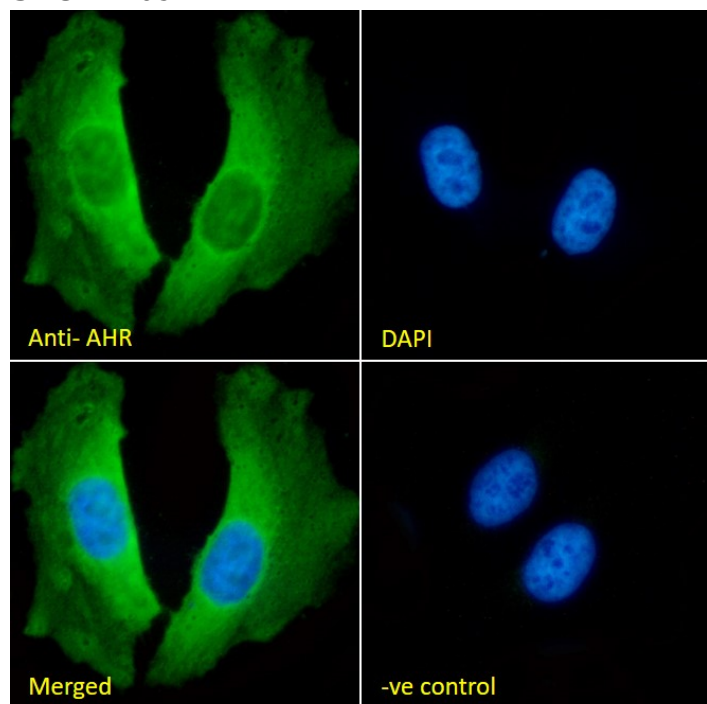


GOAT ANTI-AHR ANTIBODY

SKU: EB09247



SPECIFICATIONS

Formulation Supplied at 0.5 mg/ml in Tris saline, 0.02% sodium azide, pH7.3 with 0.5% bovine serum albumin.

Unit Size 100 µg

Storage Instructions Aliquot and store at -20°C. Minimize freezing and thawing.

Synonym /

Alias Names aromatic hydrocarbon receptor|AH-receptor|aryl hydrocarbon receptor|AHR

Usage Summary **Immunofluorescence:** Strong expression of the protein seen in the cytoplasm of U2OS and HeLa cells. Recommended concentration: 10µg/ml. **Flow Cytometry:** Flow cytometric analysis of HeLa cells. Recommended concentration: 10ug/ml.

Accession ID NP_001612.1

Blocking Peptide EBP09247

Immunogen	Peptide with sequence C-PENQKHGLNPQSA, from the internal region of the protein sequence according to NP_001612.1.
Peptide Sequence	C-PENQKHGLNPQSA
Purification Method	Purified from goat serum by ammonium sulphate precipitation followed by antigen affinity chromatography using the immunizing peptide.
Shipping Instructions	Refrigerated
Predicted Species	Human
Reactive Species	Human
Human Gene ID	196
Product Grade	https://prod-vector-labs-pimcore-assets.s3.us-east-1.amazonaws.com/assets/products/image/elite_plus_medium.png
IHC Results	In paraffin embedded Human Kidney shows both cytoplasm and nuclear staining in DCT. Recommended concentration: 2-4µg/ml.
ELISA	
Detection Limit	Antibody detection limit dilution 1:1000.
Application Type	Pep-ELISA, IHC, IF, FC

DOCUMENTS

- [Data Sheet](#)

GALLERY IMAGES

