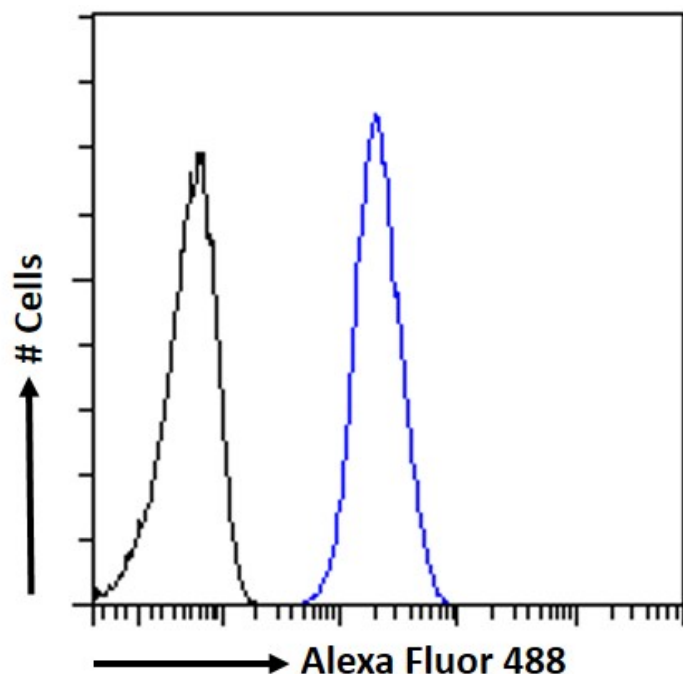


GOAT ANTI-AIBZIP / CREB3L4 ANTIBODY

SKU: EB05393



SPECIFICATIONS

Formulation	Supplied at 0.5 mg/ml in Tris saline, 0.02% sodium azide, pH7.3 with 0.5% bovine serum albumin.
Unit Size	100 µg
Storage Instructions	Aliquot and store at -20°C. Minimize freezing and thawing.
Synonym / Alias Names	cAMP responsive element binding protein 1 OTTHUMP00000035266 RP11-422P24.8 cAMP responsive element binding protein 3-like 4, JAL, hJAL, ATCE1, CREB3, CREB4, androgen-induced basic leucine zipper AIBZIP
Usage Summary	<p>Immunofluorescence: Strong expression of the protein seen in A431 and U2OS cells.</p> <p>Flow Cytometry: Flow cytometric analysis of A431 cells. Recommended concentration: 10ug/ml.</p>
Accession ID	NP_570968.1; NP_001242909.1
Blocking Peptide	EBP05393

Immunogen	Peptide with sequence C-PSGRIRSVLHADEM, from the C Terminus of the protein sequence according to NP_570968.1; NP_001242909.1.
Product Comments	This antibody is expected to recognize both reported isoforms (NP_570968.1; NP_001242909.1). Reported variants represent identical protein: NP_001242908.1, NP_570968.1, NP_001242907.1 Reported variants represent identical protein: NP_001242909.1, NP_001242910.1
Peptide Sequence	C-PSGRIRSVLHADEM
Purification Method	Purified from goat serum by ammonium sulphate precipitation followed by antigen affinity chromatography using the immunizing peptide.
Shipping Instructions	Refrigerated
Predicted Species	Human
Reactive Species	Human
Human Gene ID	148327
Product Grade	https://prod-vector-labs-pimcore-assets.s3.us-east-1.amazonaws.com/assets/products/image/elite_plus_medium.png
IHC Results	In paraffin embedded Human Prostate shows strong staining of cytoplasm in the secretory cells of the gland. Recommended concentration: 2-4µg/ml.
ELISA Detection Limit	Antibody detection limit dilution 1:32000.
Western Blot	Approx. 50kDa band observed in Human Kidney and Placenta lysate, and in lysates of cell lines MDA-MB-231, A431 and MCF7 (calculated MW of 43.4kDa according to NP_570968.1). Recommended concentration: 0.003-0.5µg/ml. Primary incubation 1 hour at room temperature.
Application Type	Pep-ELISA, WB, IHC, IF, FC

DOCUMENTS

- [Data Sheet](#)

GALLERY IMAGES

