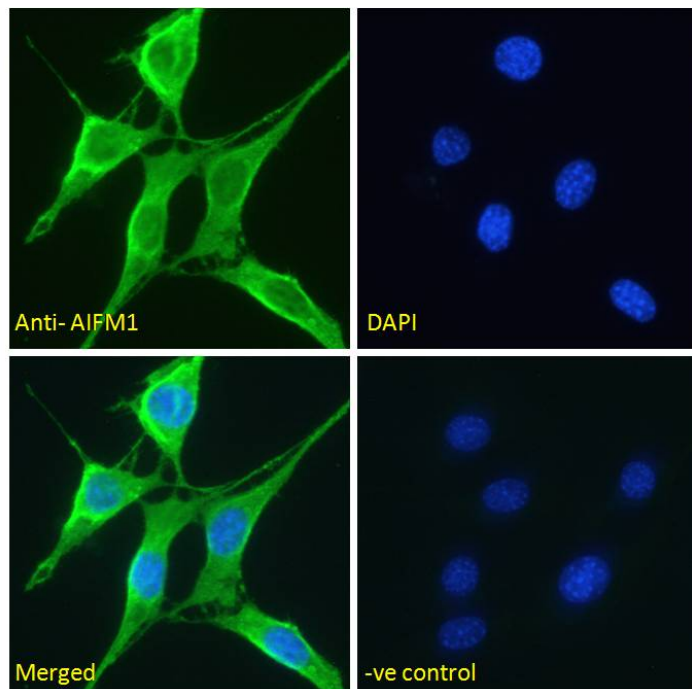


GOAT ANTI-AIFM1 (AA183-195) ANTIBODY

SKU: EB12621



SPECIFICATIONS

Formulation	Supplied at 0.5 mg/ml in Tris saline, 0.02% sodium azide, pH7.3 with 0.5% bovine serum albumin.
Unit Size	100 µg
Storage Instructions	Aliquot and store at -20°C. Minimize freezing and thawing.
Synonym / Alias Names	striatal apoptosis-inducing factor programmed cell death 8 (apoptosis-inducing factor) apoptosis-inducing factor 1, mitochondrial PDCD8 COXPD6 COWCK CMTX4 AIF apoptosis-inducing factor, mitochondrion-associated, 1 AIFM1
Usage Summary	Immunofluorescence: Strong expression of the protein seen in the Mitochondria of HeLa and NIH3T3 cells. Recommended concentration: 5-10µg/ml.
Accession ID	NP_004199.1; NP_665811.1; NP_001124319.1
Blocking Peptide	EBP12621
Immunogen	Peptide with sequence C-DDPNVTKTLRFKQ, from the internal region of the protein sequence according to NP_004199.1; NP_665811.1; NP_001124319.1.

Product	This antibody is expected to recognize isoform 1 (NP_004199.1), isoform 2 (NP_665811.1) and isoform 5
Comments	(NP_001124319).
Peptide Sequence	C-DDPNVTKTLRFKQ
Purification Method	Purified from goat serum by ammonium sulphate precipitation followed by antigen affinity chromatography using the immunizing peptide.
Shipping Instructions	Refrigerated
Predicted Species	Human, Cow
Reactive Species	Human, Mouse
Human Gene ID	9131
Product Grade	https://prod-vector-labs-pimcore-assets.s3.us-east-1.amazonaws.com/assets/products/image/elite_plus_medium.png
IHC Results	Paraffin embedded Human Kidney. Recommended concentration: 5-7µg/ml.
ELISA	
Detection Limit	Antibody detection limit dilution 1:128000.
Western Blot	Approx 70kDa band observed in lysates of cell line Jurkat (calculated MW of 66.9kDa according to NP_004199.1). Recommended concentration: 0.1-0.3µg/ml. Primary incubation 1 hour at room temperature.
Application Type	Pep-ELISA, WB, IF, IHC

DOCUMENTS

- [Data Sheet](#)

GALLERY IMAGES

