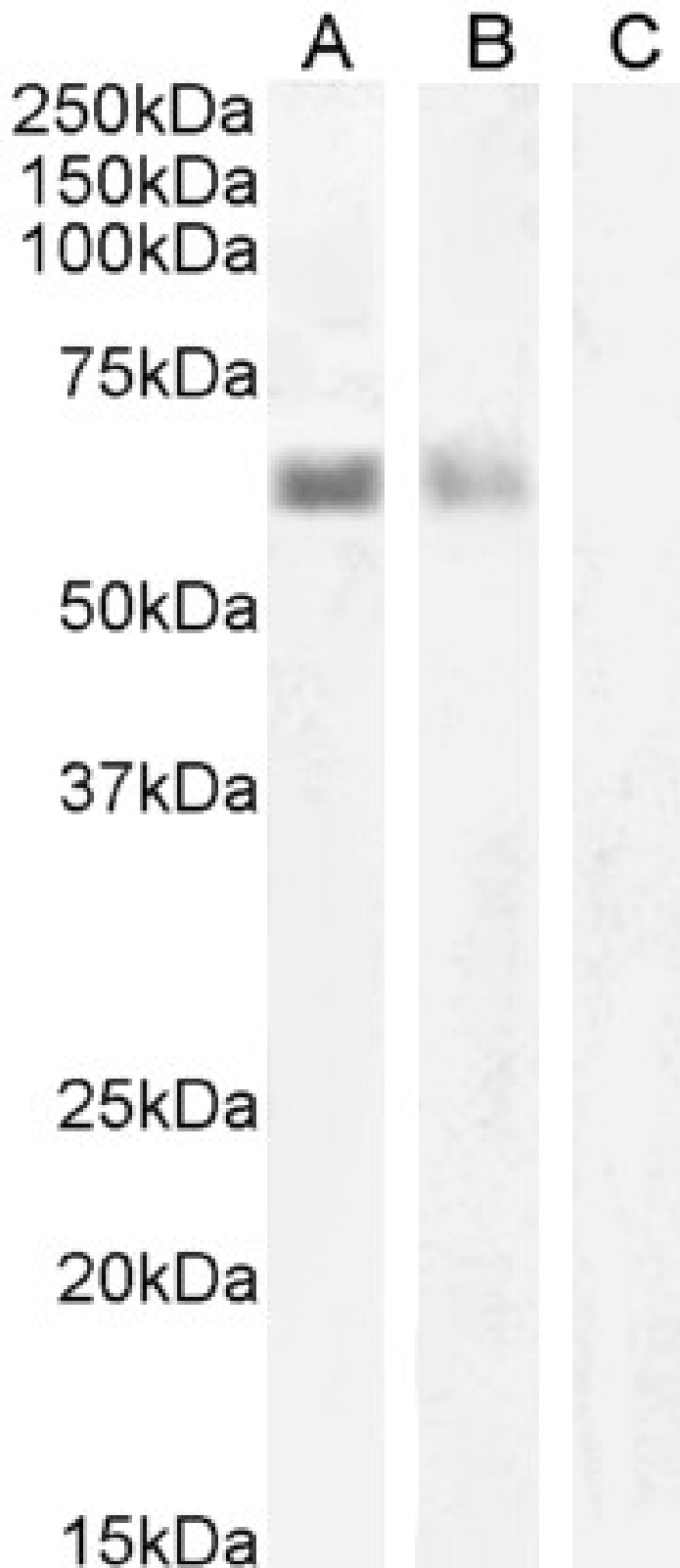


GOAT ANTI-AIRE ANTIBODY

SKU: EB05507



SPECIFICATIONS

Formulation	Supplied at 0.5 mg/ml in Tris saline, 0.02% sodium azide, pH7.3 with 0.5% bovine serum albumin.
Unit Size	100 µg
Storage	
Instructions	Aliquot and store at -20°C. Minimize freezing and thawing.
Synonym / Alias Names	autoimmune polyendocrinopathy candidiasis ectodermal dystrophy OTTHUMP00000109529 AIRE1 autoimmune regulator autoimmune regulator (autoimmune polyendocrinopathy candidiasis ectodermal dystrophy) autoimmune regulator (APECED protein) AIRE protein APECED PGA1 APSI APS1 autoimmune regulator (automimmune polyendocrinopathy candidiasis ectodermal dystrophy) AIRE
Usage Summary	<p>Immunofluorescence: Strong expression of the protein seen in the nucleoplasm and nuclear membranes of U2OS and HeLa cells. Recommended concentration: 10µg/ml.</p> <p>Flow Cytometry: Flow cytometric analysis of Jurkat cells. Recommended concentration: 10ug/ml.</p>
Accession ID	NP_000374.1
Blocking Peptide	EBP05507
Immunogen	Peptide with sequence C-QSMARPAAPFPS, from the C Terminus of the protein sequence according to NP_000374.1.
Peptide Sequence	C-QSMARPAAPFPS
Purification Method	Purified from goat serum by ammonium sulphate precipitation followed by antigen affinity chromatography using the immunizing peptide.
Shipping Instructions	Refrigerated
Predicted Species	Human
Reactive Species	Human
Human Gene ID	326
Product Grade	https://prod-vector-labs-pimcore-assets.s3.us-east-1.amazonaws.com/assets/products/image/elite_plus_medium.png
IHC Results	In paraffin embedded Human Thymic medulla shows staining of select nuclei. Recommended concentration: 2.5µg/ml.
ELISA Detection Limit	Antibody detection limit dilution 1:128000.
Western Blot	Preliminary testing showed an approx 60kDa band in nuclear lysates of cell line Jurkat and in Human Spleen lysates (calculated MW of 57.7kDa according to NP_000374.1). Recommended concentration: 1-2µg/ml. Primary incubation 1 hour at room temperature. Negative Control: Human Smooth Muscle lysate. This product has been successfully used in Western blot by an anonymous customer on HEK293 cell lysate.
Application Type	Pep-ELISA, WB, IHC, IF, FC

DOCUMENTS

- [Data Sheet](#)

GALLERY IMAGES

