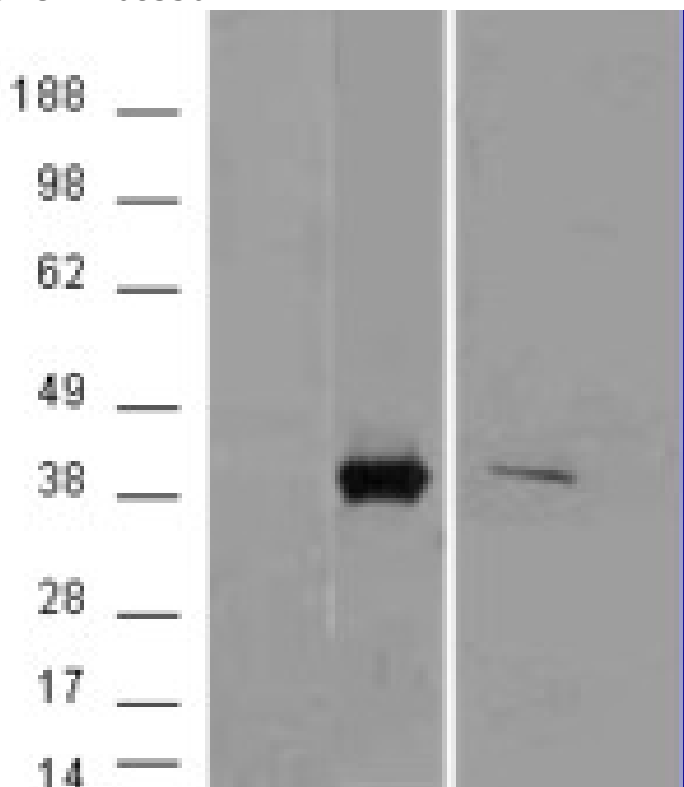


GOAT ANTI-AKR1B10 ANTIBODY

SKU: EB08336



SPECIFICATIONS

Formulation Supplied at 0.5 mg/ml in Tris saline, 0.02% sodium azide, pH7.3 with 0.5% bovine serum albumin.

Unit Size 100 µg

Storage Instructions Aliquot and store at -20°C. Minimize freezing and thawing.

Synonym / Alias Names AKR1B10|aldo-keto reductase family 1, member B10 (aldose reductase)|AKR1B11|AKR1B12|ALDRLn|ARL-1|ARL1|HIS|HIS|MGC14103|aldo-keto reductase family 1, member B10|aldo-keto reductase family 1, member B11 (aldose reductase-like)|aldose reductase-like 1N: aldose reductase-like peptide|aldose reductase-related protein|small intestine reductase

Accession ID NP_064695.2

Blocking Peptide EBP08336

Immunogen	Peptide with sequence C-QSSHLEDYPFDAE, from the C Terminus of the protein sequence according to NP_064695.2.
Peptide Sequence	C-QSSHLEDYPFDAE
Purification Method	Purified from goat serum by ammonium sulphate precipitation followed by antigen affinity chromatography using the immunizing peptide.
Shipping Instructions	Refrigerated
Predicted Species	Human
Reactive Species	Human
Human Gene ID	57016
Product Grade	https://prod-vector-labs-pimcore-assets.s3.us-east-1.amazonaws.com/assets/products/image/elite_medium.png
ELISA Detection Limit	Antibody detection limit dilution 1:8000.
Western Blot	Approx 35kDa band observed in lysates of cell lines HEK293, A549 and HepG2 (calculated MW of 36.0kDa according to NP_064695.2). In transfected HEK293 transiently expressing AKR1B10 a band of approx. 40kDa is observed. This band is not observed in the non-transfected HEK293. Recommended concentration: 0.03-0.1µg/ml.
Application Type	Pep-ELISA, WB

DOCUMENTS

- [Data Sheet](#)

GALLERY IMAGES

