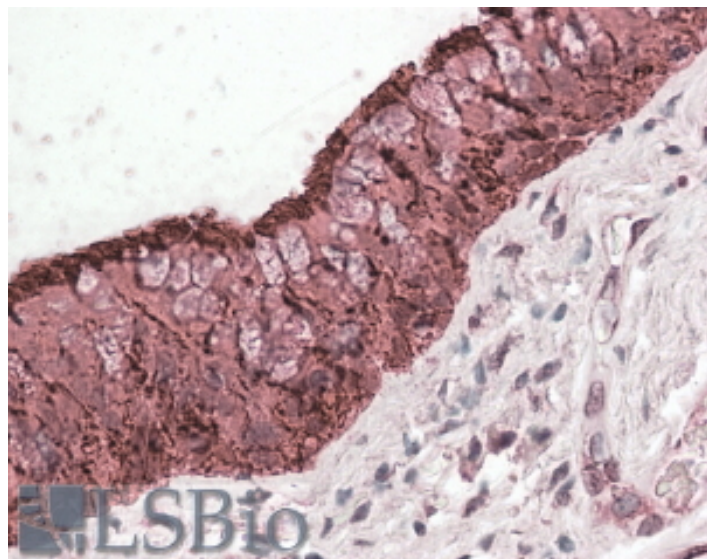


GOAT ANTI-ALDH3A1 ANTIBODY

SKU: EB10119



SPECIFICATIONS

Formulation Supplied at 0.5 mg/ml in Tris saline, 0.02% sodium azide, pH7.3 with 0.5% bovine serum albumin.

Unit Size 100 µg

Storage Instructions Aliquot and store at -20°C. Minimize freezing and thawing.

Synonym / Alias Names ALDH3A1|stomach aldehyde dehydrogenase|MGC10406|ALDHIII|ALDH3|aldehyde dehydrogenase, dimeric NADP-preferring|aldehyde dehydrogenase type III|aldehyde dehydrogenase isozyme 3|aldehyde dehydrogenase 3A1|aldehyde dehydrogenase 3 family, memberA1

Accession ID NP_000682.3

Blocking Peptide EBP10119

Immunogen Peptide with sequence C-RYPPSPAKMTQH, from the C Terminus of the protein sequence according to NP_000682.3.

Product Comments Reported variants represent identical protein: NP_001128639.1, NP_000682.3, NP_001128640.1

Peptide Sequence C-RYPPSPAKMTQH

Purification Method Purified from goat serum by ammonium sulphate precipitation followed by antigen affinity chromatography using the immunizing peptide.

Shipping Instructions	Refrigerated
Predicted Species	Human, Mouse
Reactive Species	Human, Mouse
Human Gene ID	218
Product Grade	https://prod-vector-labs-pimcore-assets.s3.us-east-1.amazonaws.com/assets/products/image/elite_medium.png
IHC Results	In paraffin embedded Human Lung shows strong staining of the respiratory epithelium of the tracheal wall. Recommended concentration, 3-5µg/ml.
ELISA	
Detection Limit	Antibody detection limit dilution 1:32000.
Western Blot	Approx 55kDa band observed in Mouse Eye lysates (calculated MW of 50.5kDa according to Mouse NP_031462.2). Recommended concentration: 0.01-0.03µg/ml.
Application Type	Pep-ELISA, WB, IHC

DOCUMENTS

- [Data Sheet](#)

GALLERY IMAGES

