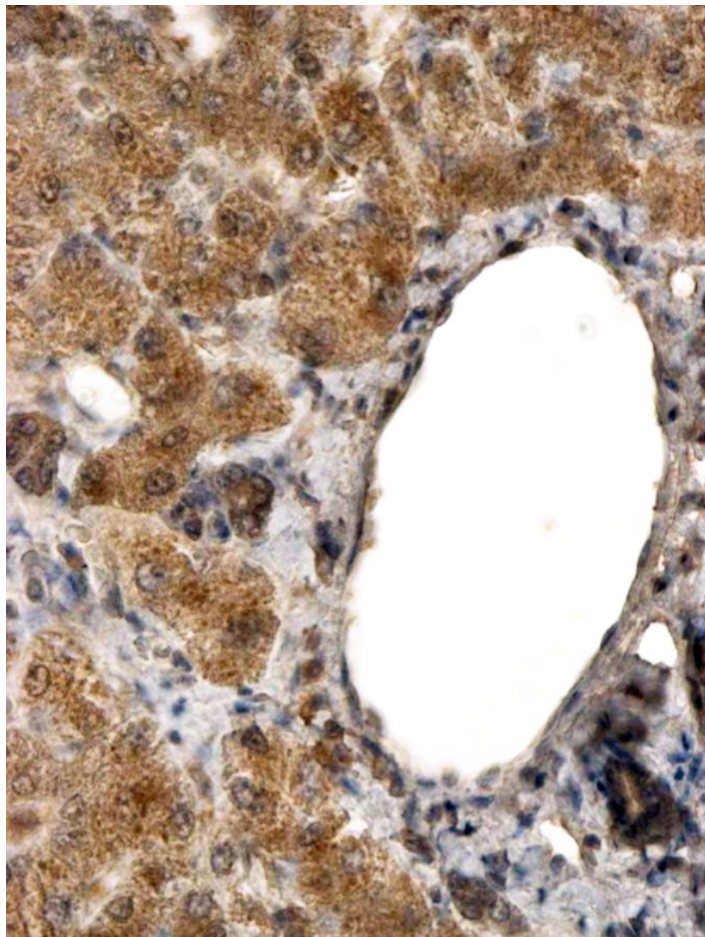


GOAT ANTI-ALDH3A2 ANTIBODY

SKU: EB10131



SPECIFICATIONS

Formulation Supplied at 0.5 mg/ml in Tris saline, 0.02% sodium azide, pH7.3 with 0.5% bovine serum albumin.

Unit Size 100 µg

Storage Instructions Aliquot and store at -20°C. Minimize freezing and thawing.

Synonym / Alias Names aldehyde dehydrogenase 10|aldehyde dehydrogenase 3 family, member A2|aldehyde dehydrogenase 3A2|ALDH10|DKFZp686E23276|FALDH|fatty aldehyde dehydrogenase|FLJ20851|OTTHUMP00000065801|SLS|ALDH3A2

Accession ID	NP_001026976.1; NP_000373.1
Blocking Peptide	EBP10131
Immunogen	Peptide with sequence C-SLKREGANKLRYPP, from the internal region of the protein sequence according to NP_001026976.1; NP_000373.1.
Product Comments	This antibody is expected to recognize both reported isoforms (NP_001026976.1; NP_000373.1).
Peptide Sequence	C-SLKREGANKLRYPP
Purification Method	Purified from goat serum by ammonium sulphate precipitation followed by antigen affinity chromatography using the immunizing peptide.
Shipping Instructions	Refrigerated
Predicted Species	Human, Dog, Cow
Reactive Species	Human
Human Gene ID	224
Product Grade	https://prod-vector-labs-pimcore-assets.s3.us-east-1.amazonaws.com/assets/products/image/elite_medium.png
IHC Results	In paraffin embedded Human Liver shows textured cytoplasm staining in hepatocytes. Recommended concentration, 2-4µg/ml.
ELISA Detection Limit	Antibody detection limit dilution 1:32000.
Application Type	Pep-ELISA, IHC

DOCUMENTS

- [Data Sheet](#)

GALLERY IMAGES

