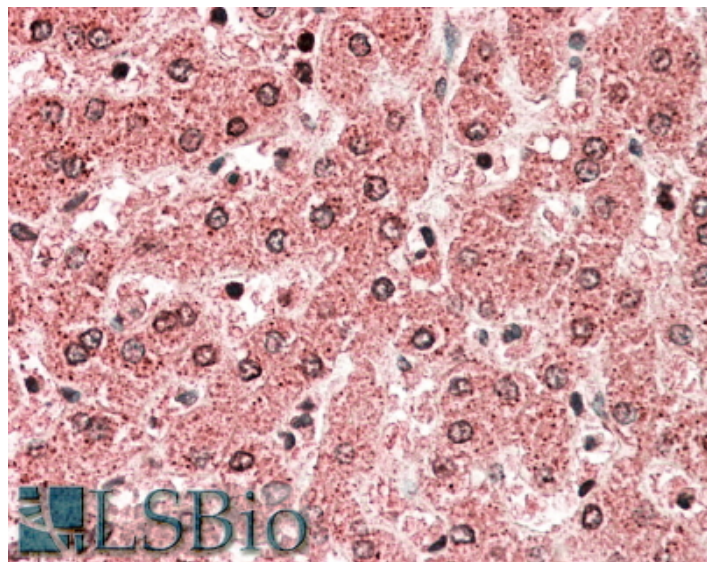


GOAT ANTI-ALDH5A1 (AA 485-496) ANTIBODY

SKU: EB10435



SPECIFICATIONS

Formulation Supplied at 0.5 mg/ml in Tris saline, 0.02% sodium azide, pH7.3 with 0.5% bovine serum albumin.

Unit Size 100 µg

Storage Instructions Aliquot and store at -20°C. Minimize freezing and thawing.

Synonym / Alias Names ALDH5A1|succinate-semialdehyde dehydrogenase|SSDH|SSADH|NAD(+)-dependent succinic semialdehyde dehydrogenase|mitochondrial succinate semialdehyde dehydrogenase|aldehyde dehydrogenase 5A1|aldehyde dehydrogenase 5 family, member A1

Accession ID NP_733936.1; NP_001071.1

Blocking Peptide EBP10435

Immunogen Peptide with sequence C-SQDPAQIWRVAE, from the internal region of the protein sequence according to NP_733936.1; NP_001071.1.

Product Comments This antibody is expected to recognize both reported isoforms (NP_733936.1; NP_001071.1). Amino acid numbering in name calculated from NP_733936.1.

Peptide Sequence C-SQDPAQIWRVAE

Purification Method Purified from goat serum by ammonium sulphate precipitation followed by antigen affinity chromatography using the immunizing peptide.

Shipping Instructions	Refrigerated
Predicted Species	Human, Mouse, Rat, Dog, Cow
Reactive Species	Human, Mouse, Rat
Human Gene ID	7915
Mouse Gene ID	214579
Rat Gene ID	291133
Product Grade	https://prod-vector-labs-pimcore-assets.s3.us-east-1.amazonaws.com/assets/products/image/elite_medium.png
IHC Results	In paraffin embedded Human Liver shows heavy textured cytoplasm staining in hepatocytes, consistent with mitochondria.. Recommended concentration, 5-10µg/ml.
ELISA	
Detection Limit	Antibody detection limit dilution 1:32000.
Western Blot	Approx 55kDa band observed in Human Liver lysates (calculated MW of 58.7kDa according to NP_733936.1). Recommended concentration: 0.3-1µg/ml. Please note that both this product and EB10436 detects a 50kDa in Mouse and Rat Liver lysates (calculated MW of 56.0kDa according to Mouse NP_766120.1).
Application Type	Pep-ELISA, WB, IHC

DOCUMENTS

- [Data Sheet](#)

GALLERY IMAGES

